



Robotic Lawn Mower

>>>>> No Boundary Wire <<<<<

RoboUP®



APP User Guide

Contents

1	APP DOWNLOAD AND INSTALLATION	1
2	ACCOUNT REGISTRATION AND LOGIN	1
3	BASIC INSTALLATION	3
3.1	STEP 1: ADD A ROBOUP® MOWER	3
3.2	STEP 2: INSTALLATION	4
3.3	STEP 3: CREATE A VIRTUAL MAP	8
4	BLUETOOTH CONNECTION	15
4.1	BUILD A BLUETOOTH CONNECTION	15
4.2	DELETE BLUETOOTH CONNECTION	17
5	WI-FI CONNECTION	18
5.1	CONNECT WI-FI BY BLUETOOTH:	19
5.2	CONNECTING WI-FI BY USING MOWER SOFT ACCESS POINT (AP):	20
6	MAP EDITING	22
6.1	DELETE A MAP	23
6.2	ADD A BOUNDARY	24
6.3	MAP ERASING	28
6.4	CREATE A NO-GO ZONE	29
6.5	CREATE A PASSAGE	31
6.6	DANGEROUS BOUNDARY	34
6.7	TO-GO ZONE	35
6.8	EDIT MAP NAME	37
7	MOWING SETTINGS	39
7.1	SELECTIVE ZONE MOWING	39
7.2	CUSTOMIZED MOWING PARAMETERS	40
8	MORE FUNCTIONS	41
8.1	EDIT MOWER NAME	41
8.2	SPOT CUTTING	42
8.3	SCHEDULE MOWING	44
8.4	REMOTE CONTROL MODE	47
8.5	DEVICE LOG	48
8.6	RAIN MODE	49
8.7	BLADES REPLACEMENT	51
8.8	ANTI-THEFT	52
8.9	NO MOWING	53
8.10	DEVICE INFORMATION	55
8.11	DEVICE PIN CODE	56
8.12	DEVICE UPGRADE	57
8.13	FACTORY RESET	59
9	ACCOUNT	60
9.1	UNBINDING MOWER	60
9.2	UNSUBSCRIBE	62
9.3	LOG OUT	64

1 APP Download and Installation

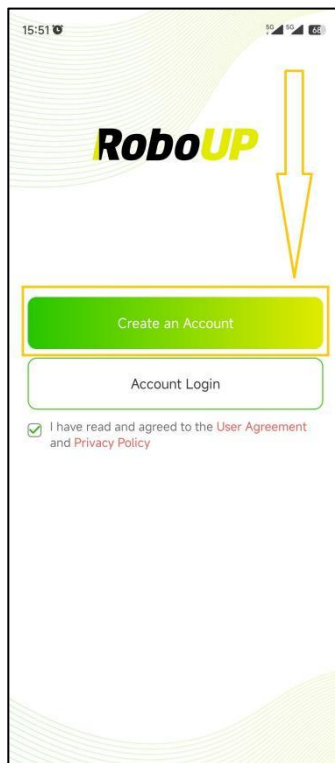
Scan the following QR code to download the RoboUP® APP installation file and follow the pop-ups to install the APP.



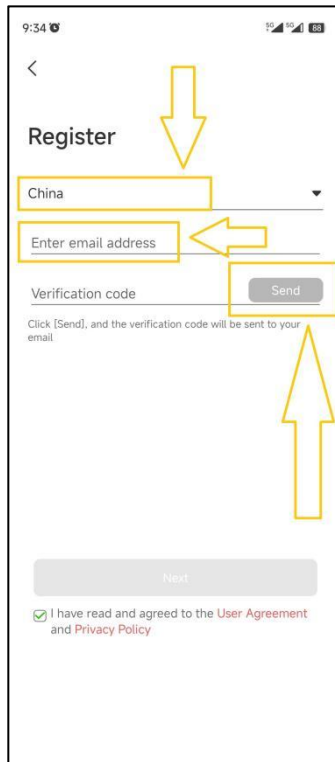
Android/iOS

2 Account Registration and Login

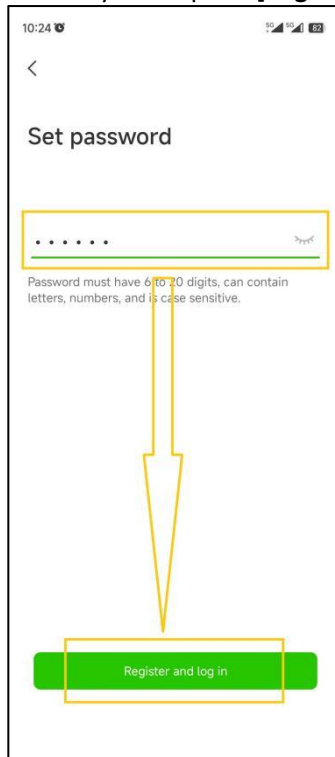
- 1) Open the RoboUP® APP on your smart phone and click the [Create an Account] button in the top right corner to enter the registration page.



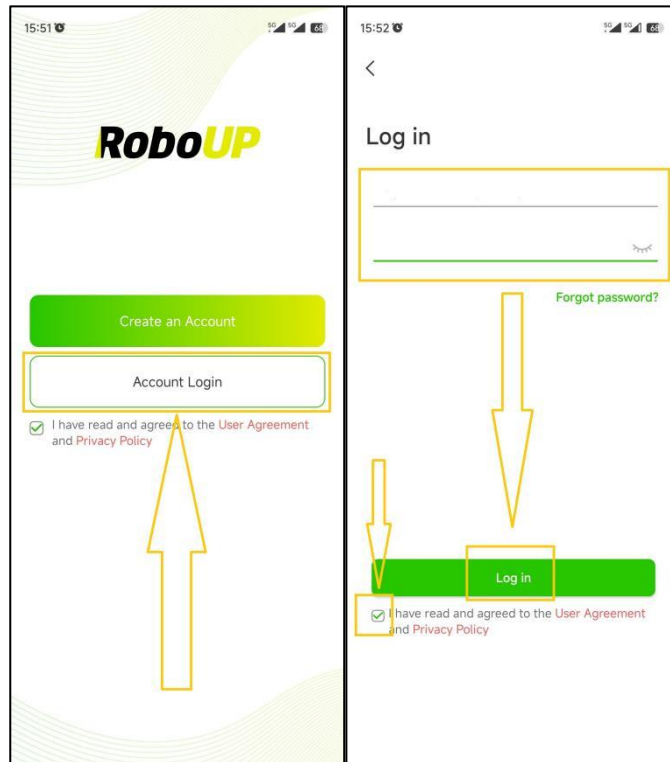
- 2) Select the region or country where you are located and type in a valid e-mail address. Hit [Send] button to request a verification code.



- 3) Check your mailbox for an e-mail with the verification code. Enter the code into the APP and hit **[Next]**.
- 4) Set a login password for your account security and tap the **[Register and log in]** button to log in.

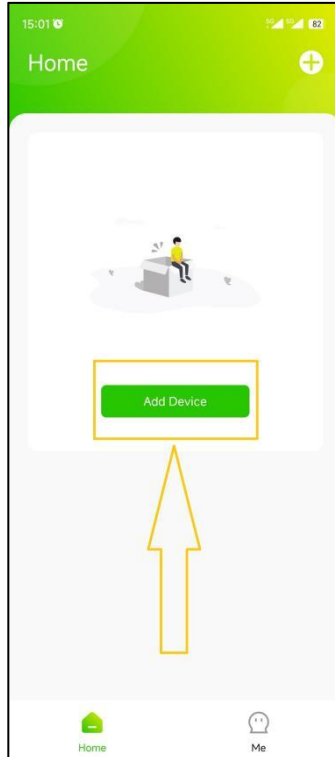


- 5) Click **[Account Login]**, type in your account name and password and check the **[I have read and agreed to the User Agreement and Privacy Policy]** (after you have carefully read and agreed to it) and tap **[Log in]** to log in.



3 Basic Installation

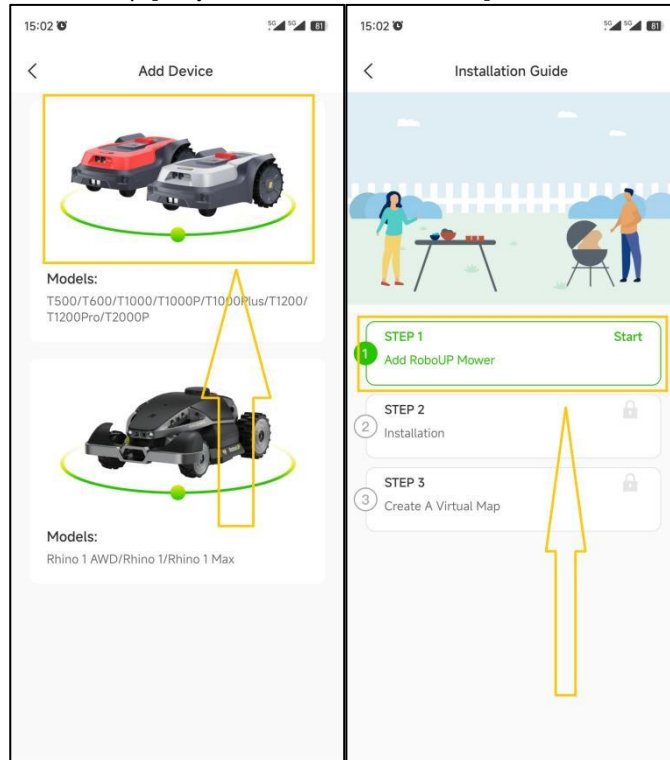
The APP's basic installation guide will pop up in case you want to add a new device to your account.



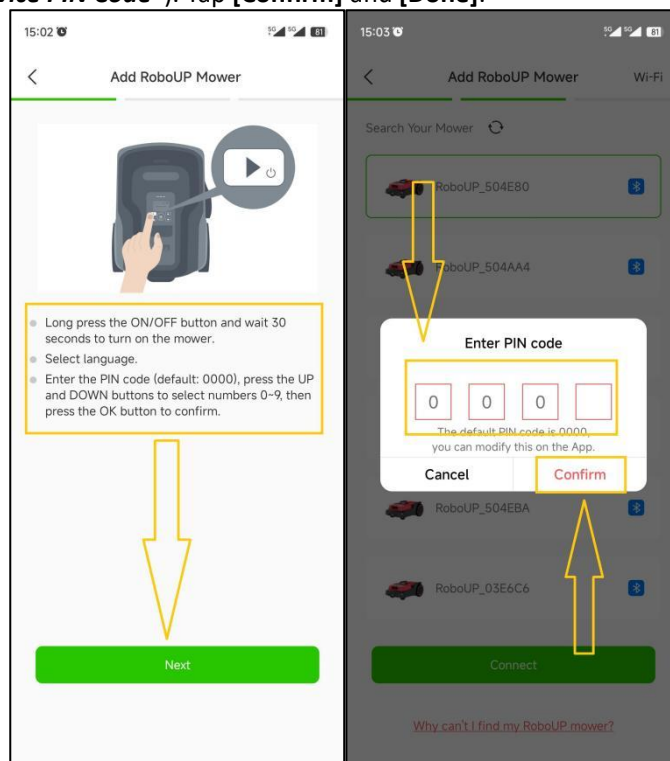
3.1 Step 1: Add a RoboUP® Mower

Note: The default method to connect your smart phone with the mower is via Bluetooth. If you prefer Wi-Fi connection, click the Wi-Fi icon on the top right corner on the device list page and refer to "5 Wi-Fi Connection" to connect the mower to your Wi-Fi home network.

- 1) Select your mower model and tap **[Step 1: Add RoboUP Mower]** to enter the installation guide.

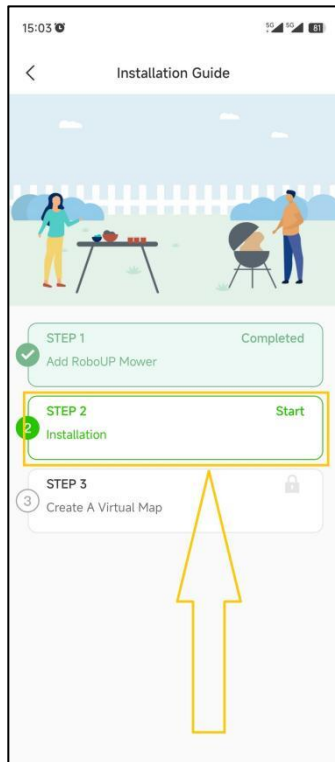


- 2) Long press the mower's On/Off button to power it up. Enter the PIN code (the default is 0000, for changing the PIN refer to "**8.10 Device PIN Code**"). Tap **[Confirm]** and **[Done]**.



3.2 Step 2: Installation

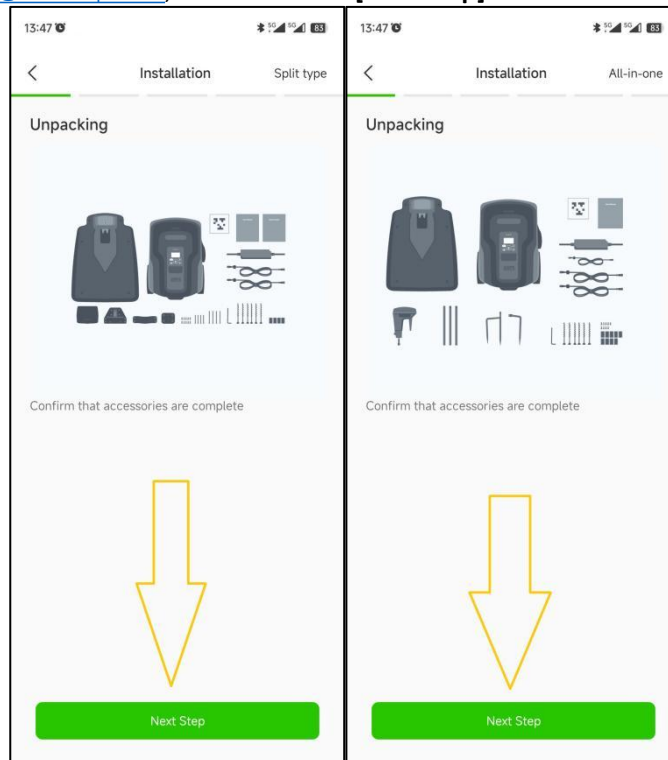
Click **[Step 2: Installation]** to install the charging station and RTK base station according to the step prompts and animations.

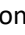


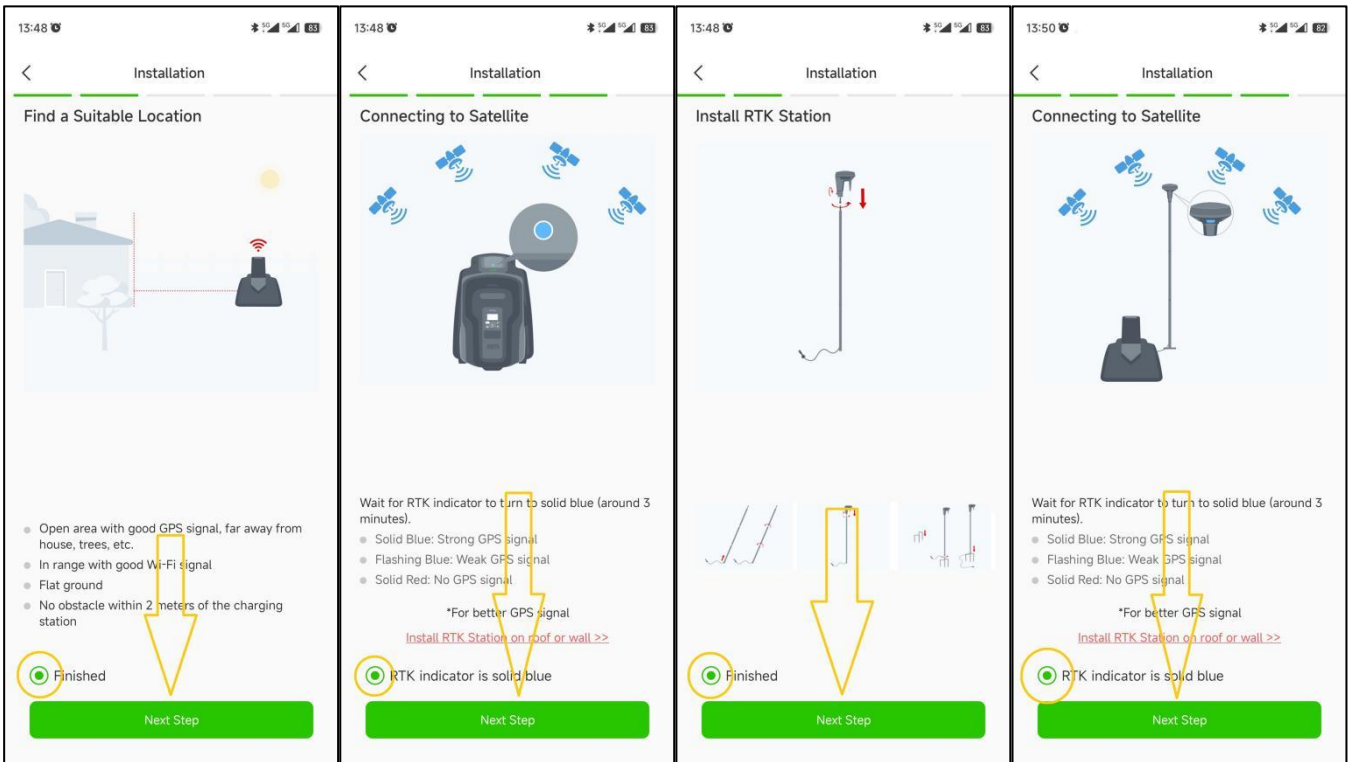
Note: If the RTK base station module in the package is already attached to the charging station, you have an “All-in-One” version. If the RTK base station module is packed separately, you own a “Split” type.

Refer to the following steps to finish **Step2: Installation**

- 1) **Unpacking:** refer to the guide to check if any parts are missing. If parts are missing, contact our RoboUP® service team: service@iroboup.com, otherwise click **[Next Step]**.



- 2) **Find a suitable location:** A suitable location should be flat without obstacles within 2m of the charging station. Good Wi-Fi coverage is required. Once you have found a good spot return to the APP and check the  button at the bottom and click **[Next step]**.



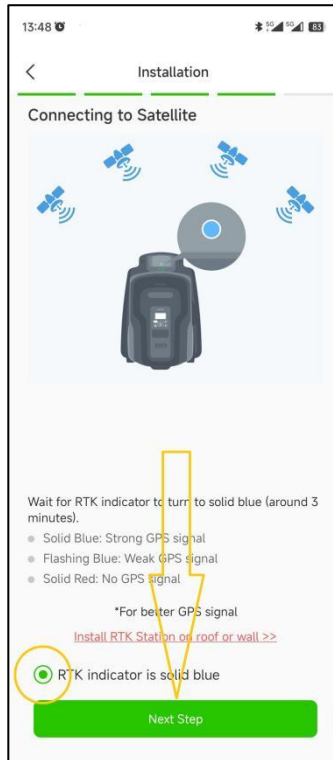
NOTE: there are 2 extension cords: one for the charging station and another one for the RTK base station module.

- 3) **Power up the charging station:** If needed take the power extension cord and put it in-between the power adapter and the charging station. Then connect the power adapter to a mains electricity power socket to power up the charging station. Once completed, return to the APP and check the button at the bottom and click [Next step].

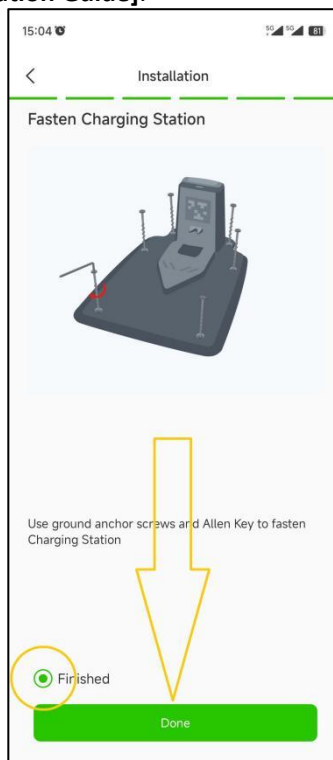


- 4) **Connecting to Satellites:** Wait for at least 3 minutes to receive as many GNSS satellite signals as possible. Check if the signal indicator LED of the RTK base station modules turns solid blue. Once completed, return to the APP and check the button at the bottom and click [Next step].

Note: If the signal indicator LED of the RTK base station cannot turn solid blue for a long time, detach the RTK base station from the charging station and install it in another proper elevated location using the RTK extension cord. For details, click and view [Install RTK Station Separately].



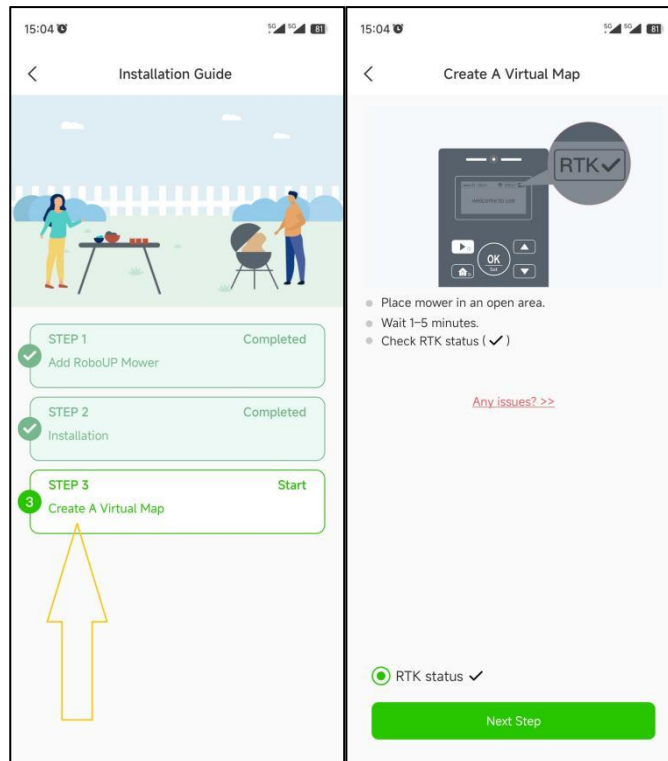
5) **Fix the charging station:** After the previous steps are done well, use a wrench and fixing nails to fasten the charging station in the ground. Once completed, return to the APP and check the button at the bottom, and click **[Done]** to return to the **[Installation Guide]**.



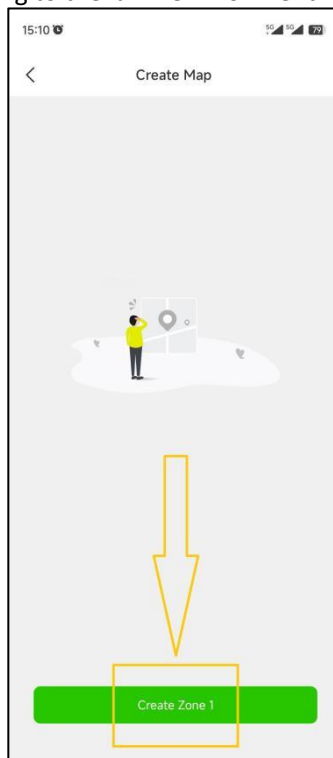
3.3 Step 3: Create a Virtual Map

3.3.1 Create the main boundary

- 1) **Create a virtual map:** Click **[Step 3: Create a virtual map]** to enter the mapping page. Check if the RTK icon on the LCD User Interface (UI) display is [✓]: if yes, check the button at the bottom and click **[Next step]**.

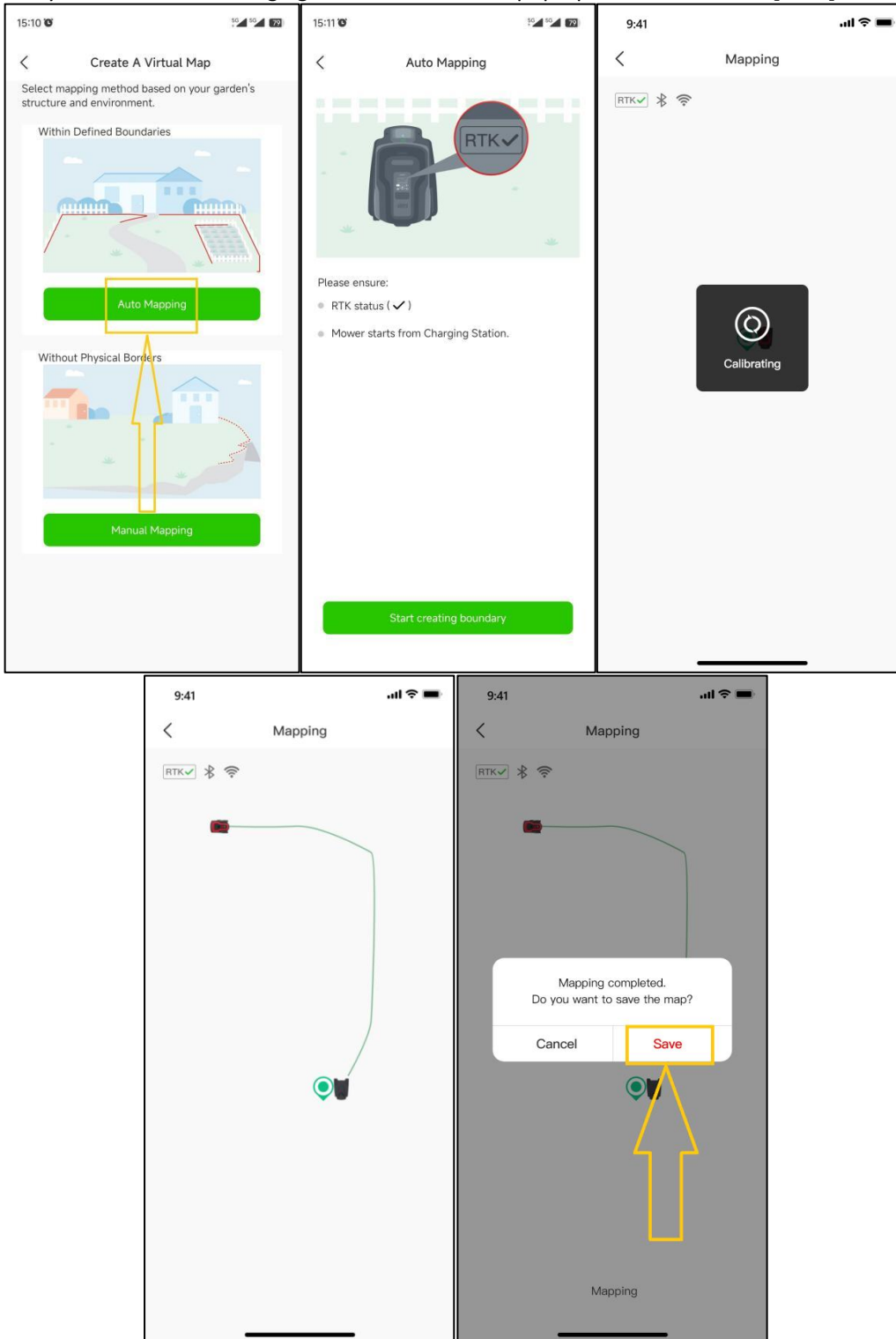


- 2) **Build the main boundary map** (that is the lawn zone where the charging station is located): click **[Create Zone 1]**. Choose the method of mapping according to the lawn environment: "Auto mapping" or "Manual mapping".



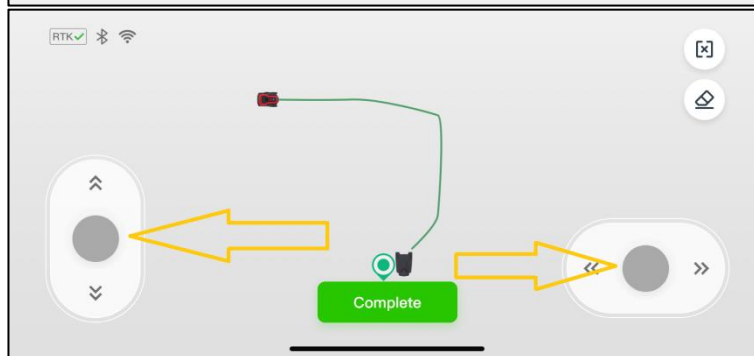
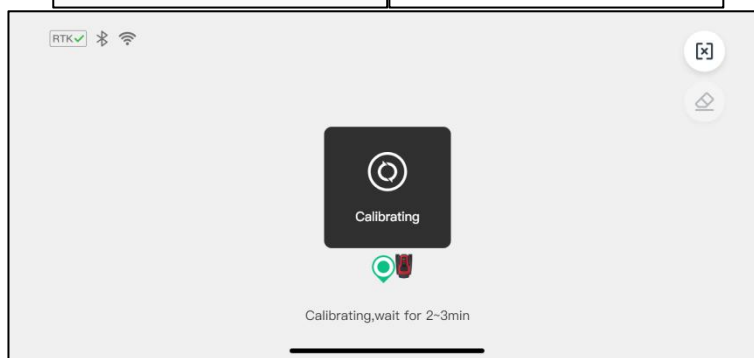
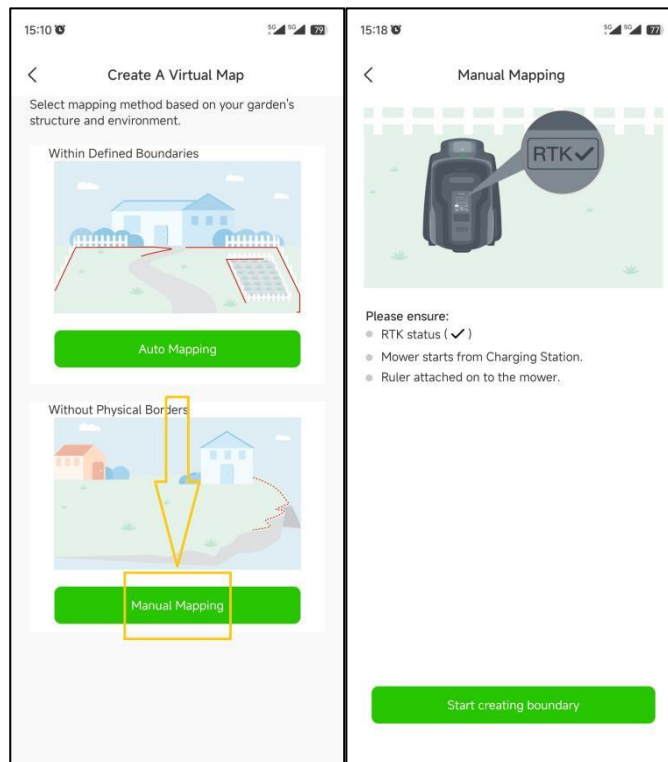
- a. **Auto mapping:** If the lawn has physical borders (fences, walls, etc.) click **[Auto mapping]** to enter the next page. Click **[Start creating boundary]**. First the mower will calibrate automatically. Once finished it will leave the charging station and automatically build a boundary along the edges/physical borders. After the mower has

almost fully returned to the charging station, wait for the pop-up window and click **[Save]** to save the map.

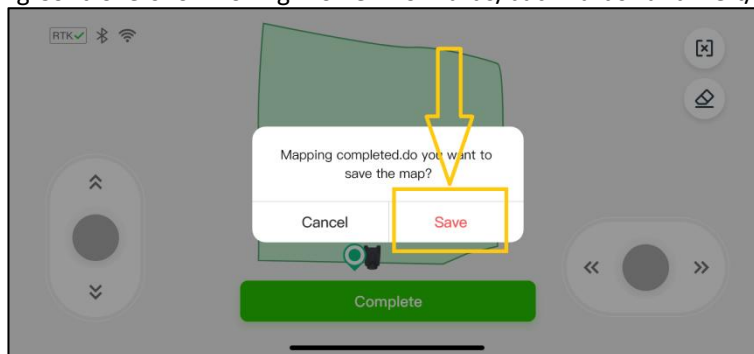


- b. **Manual mapping:** If the lawn has NO physical borders click **[Manual mapping]** to enter the next page. If needed install the ruler from the package). Check button at the bottom and click **[Start creating boundary]** to enter the manual mapping page. Once the mower has finished calibration, use the two thumb slide controllers to manually steer the mower generating a boundary along the edges. After the mower has almost fully returned to the charging station, wait for the pop-up window and click **[Complete]** and **[Save]** to save the boundary map.

Note: For a stable Bluetooth connection during mapping we recommend you walking behind the mower closely (max. 3m distance).



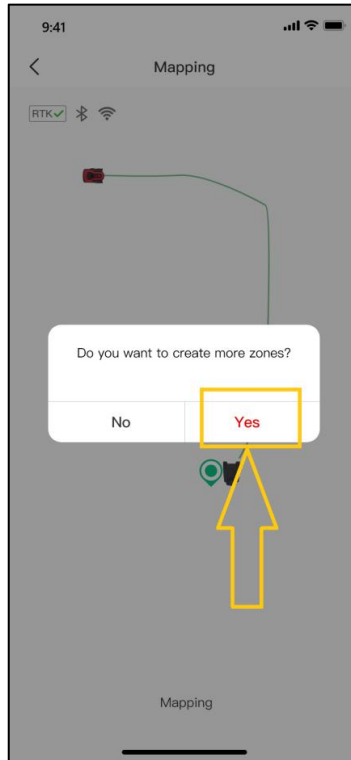
Sliding Controllers for moving mower “forwards/backwards” and “left/right”



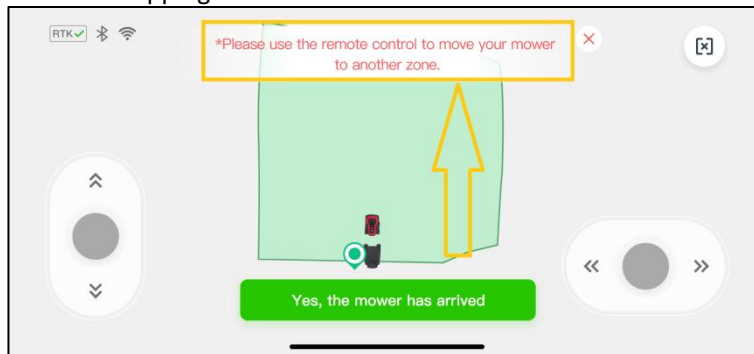
3.3.2 Create a secondary boundary or more boundaries

- 1) If there is more than one area of lawn, click **[Yes]** for creating boundaries for additional zones. On the controller

page use the two thumb sliders and steer the mower to the new start point.



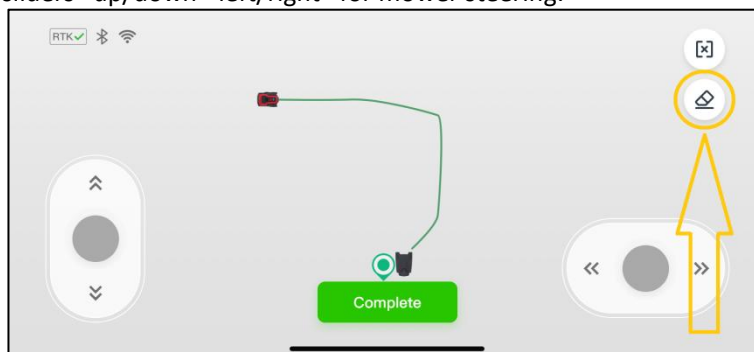
- 2) On the following page click **[Yes, the mower has arrived]**. Refer to **3.3.1 Create the main boundary** to choose the proper method for the mapping.

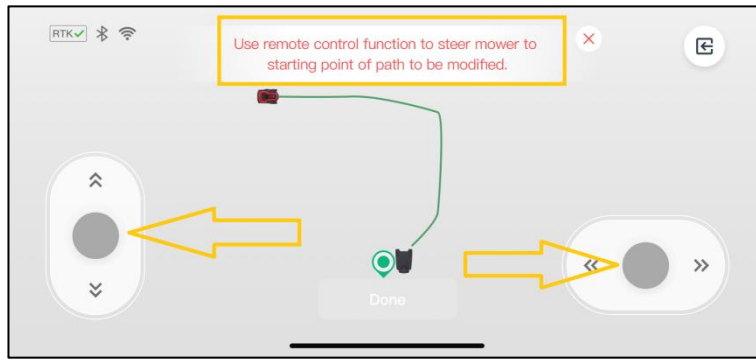


3.3.3 Map Erasing

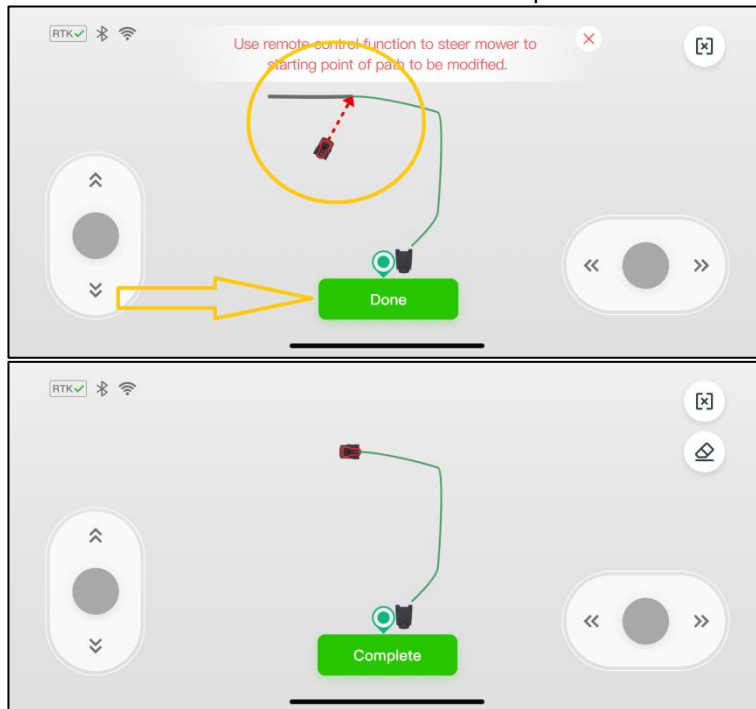
Note: Presently this function is only supported in manual mapping. In case the mower has problems to work along the path of the boundary you need to fix this. Start this function and steer the mower to the starting point that needs to be modified.

- 1) On the manual mapping page, click the **[Eraser]** icon in the upper right corner to enter the map modification page. Use thumb sliders "up/down - left/right" for mower steering.



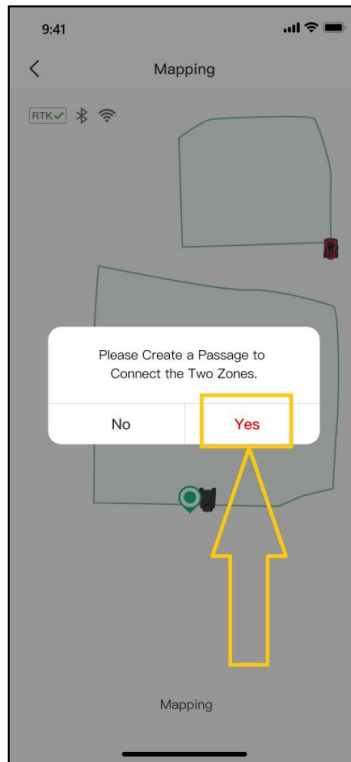


- 2) Once the mower has reached a point of the boundary that you want to modify, click **[Done]**. This part of the boundary will be erased. Continue now to create a corrected map.

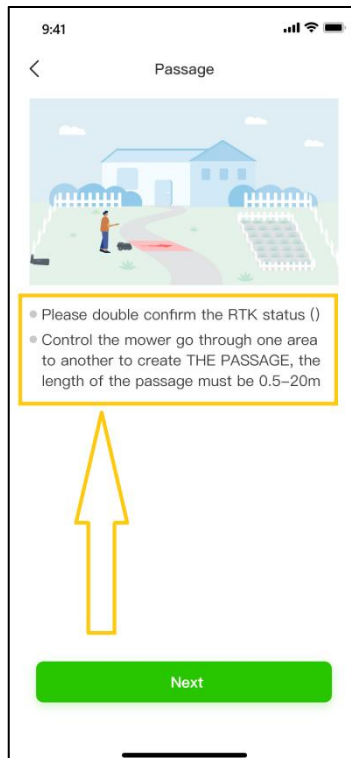


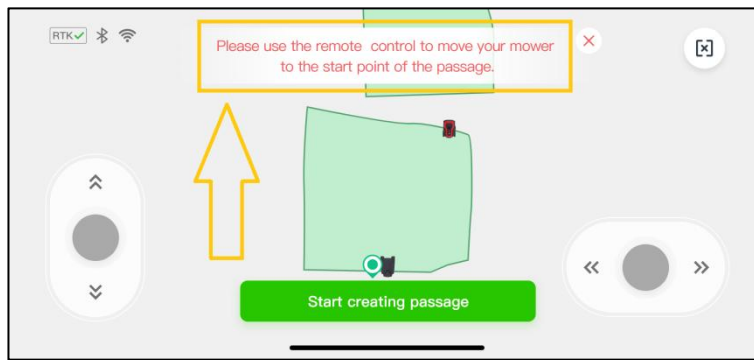
3.3.4 Create a Passage

Once a secondary boundary has been mapped you need to create a passage to link it with the first zone (assuming that a proper physical pathway exists). For that click **[Yes]** on the pop-up prompt **[Please Create a Passage to Connect the Two Zones]**.

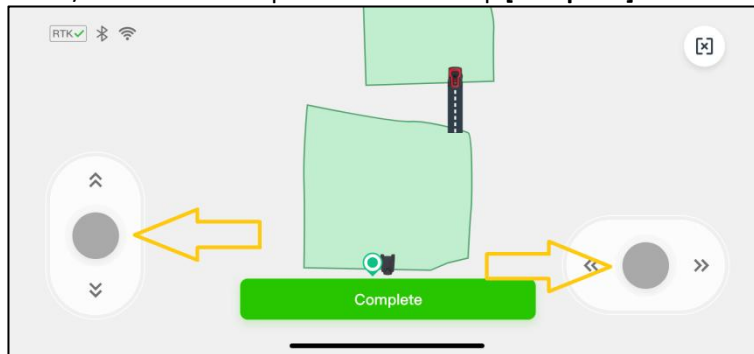


- 1) Make sure the length of the physical passage is between 0.5-20 meters. Click **[Next]** to enter the zone overview page. Use thumb sliders “forward/backward” and “left/right” and steer the mower to the starting point of the passage.



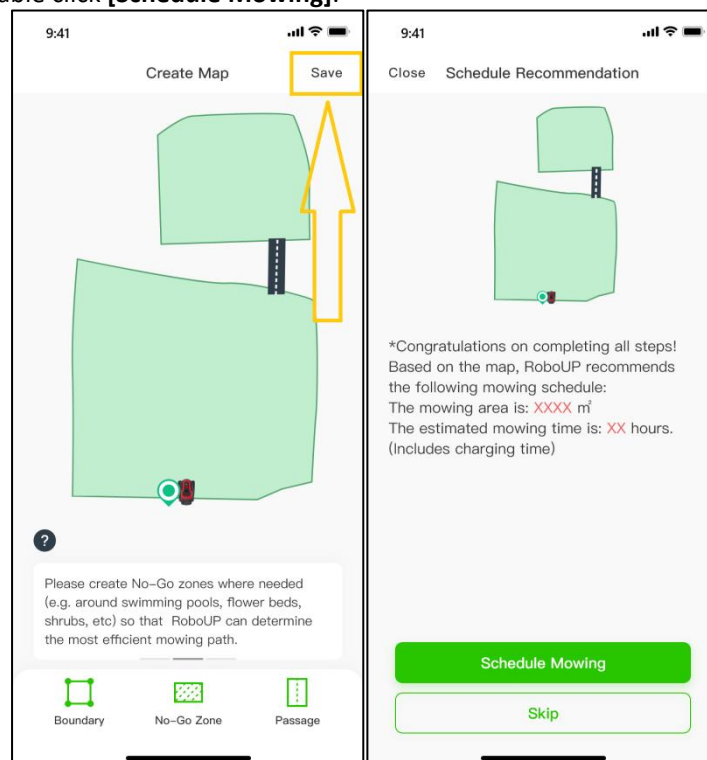


- 2) Now click **[Start creating passage]** and use thumb sliders to steer the mower through the physical passage to link the two boundaries/zones on the map. Once finished tap **[Complete]** to save the passage.

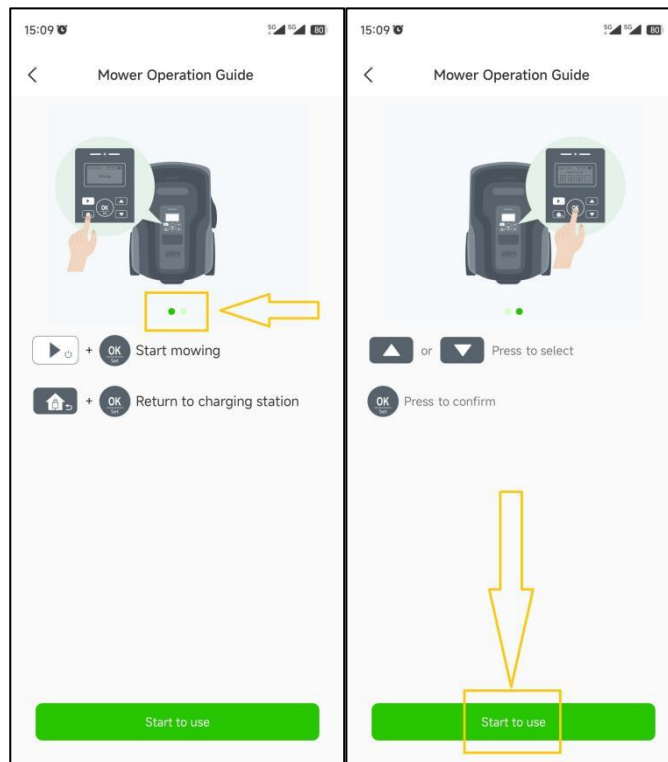


3.3.5 Finish the Mapping

- 1) If there are any objects (pool, flower bed, sandbox, etc.) that you need to protect from the mower, click **[No-go Zone]** to create "no-go-zones". Once all boundaries, passages, and "No-go Zones" have been created, click **[Save]** to finish mapping. The next page shows a recommended mowing schedule. In order to overwrite it and set your own timetable click **[Schedule Mowing]**.



- 2) The APP will eventually lead you to an introduction how to operate the keys and LC display of the mower's User Interface (UI) panel. Make sure you are familiar how to use it. Click **[Start to use]**. Now you can operate the mower by either the APP or the UI panel.



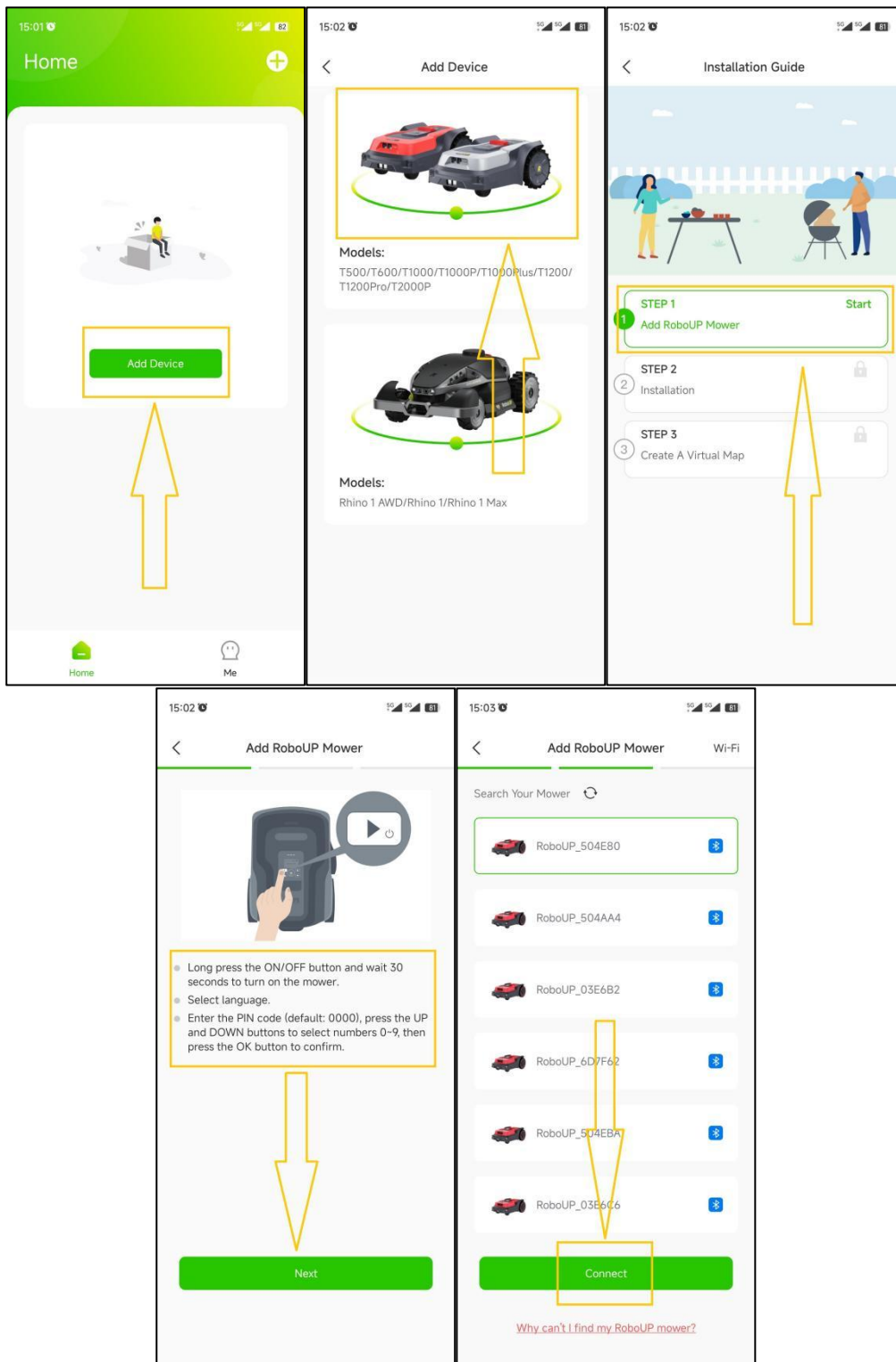
Note: For an in-depth guide how to edit maps, refer to “6 Map editing”.

4 Bluetooth Connection

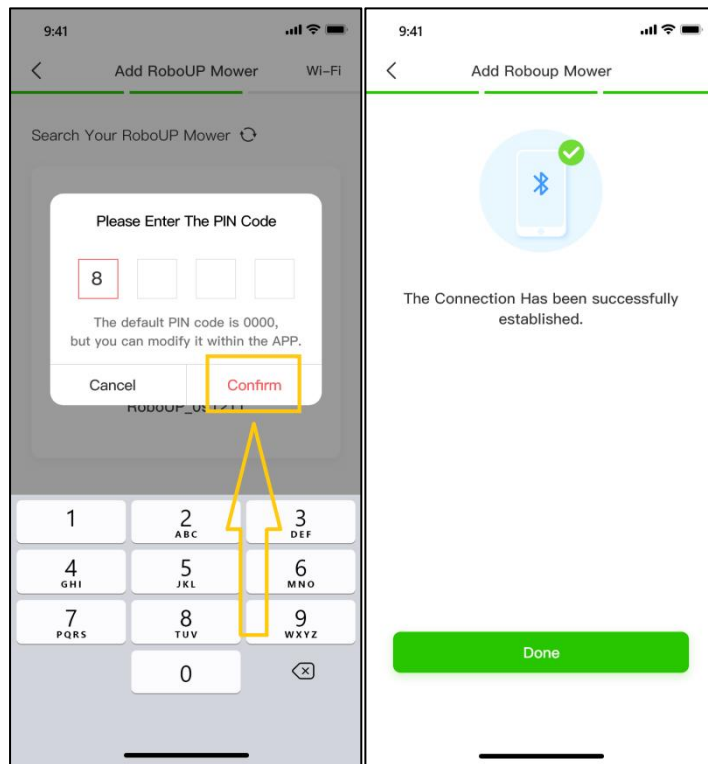
Note: To control the mower with a new phone via Bluetooth, you firstly need to decouple the mower from the current phone. After that follow “Step 3: Create a Virtual Map” in “3 Basic Installation” to couple the new phone to the mower via Bluetooth connection.

4.1 Build a Bluetooth Connection

- 1) Tap [Add Device] or the [+] icon on the APP home page. Select your mower model and click [Step 1: Add your RoboUP Mower]. Follow the prompts to power up the mower. Click [Next]. When the device is found, click [Connect]. If the device cannot be found, click [Why can't I find my RoboUP mower?] to troubleshoot.

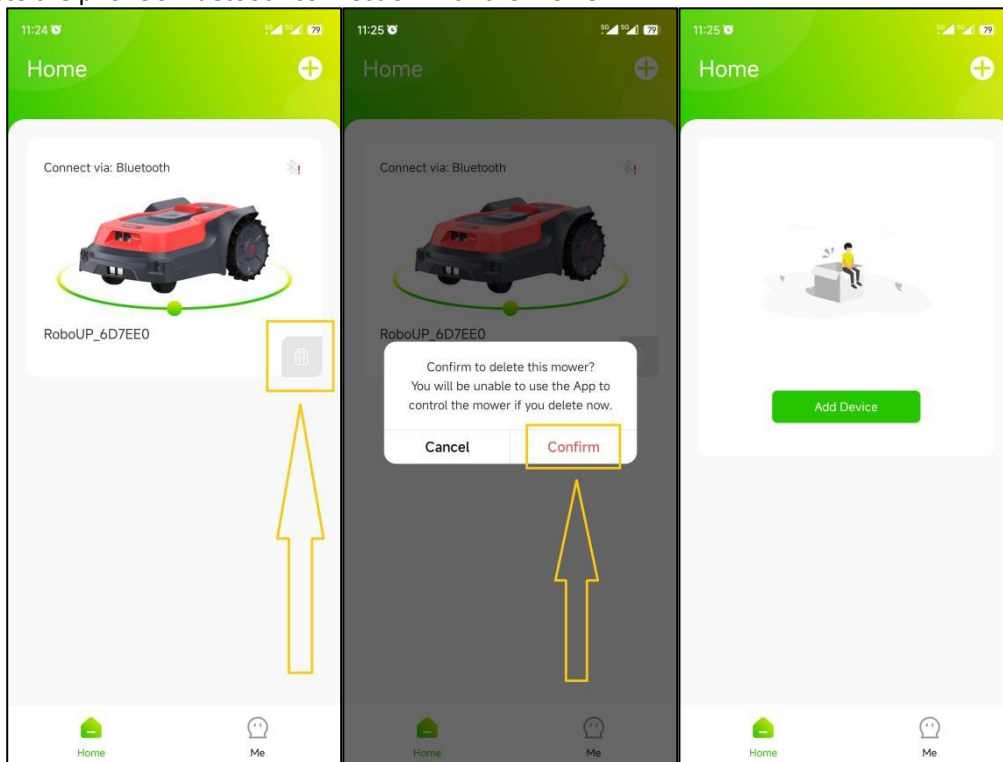


- 2) Enter the PIN code of the RoboUP® mower (the default is 0000, which can be changed by referring to **8.11 Device PIN code**). Click **[Confirm]** to start establishing a Bluetooth connection of the phone with the mower. Once the connection is established, click **[Done]** to return to the **[Installation Guide]** page.



4.2 Delete Bluetooth Connection

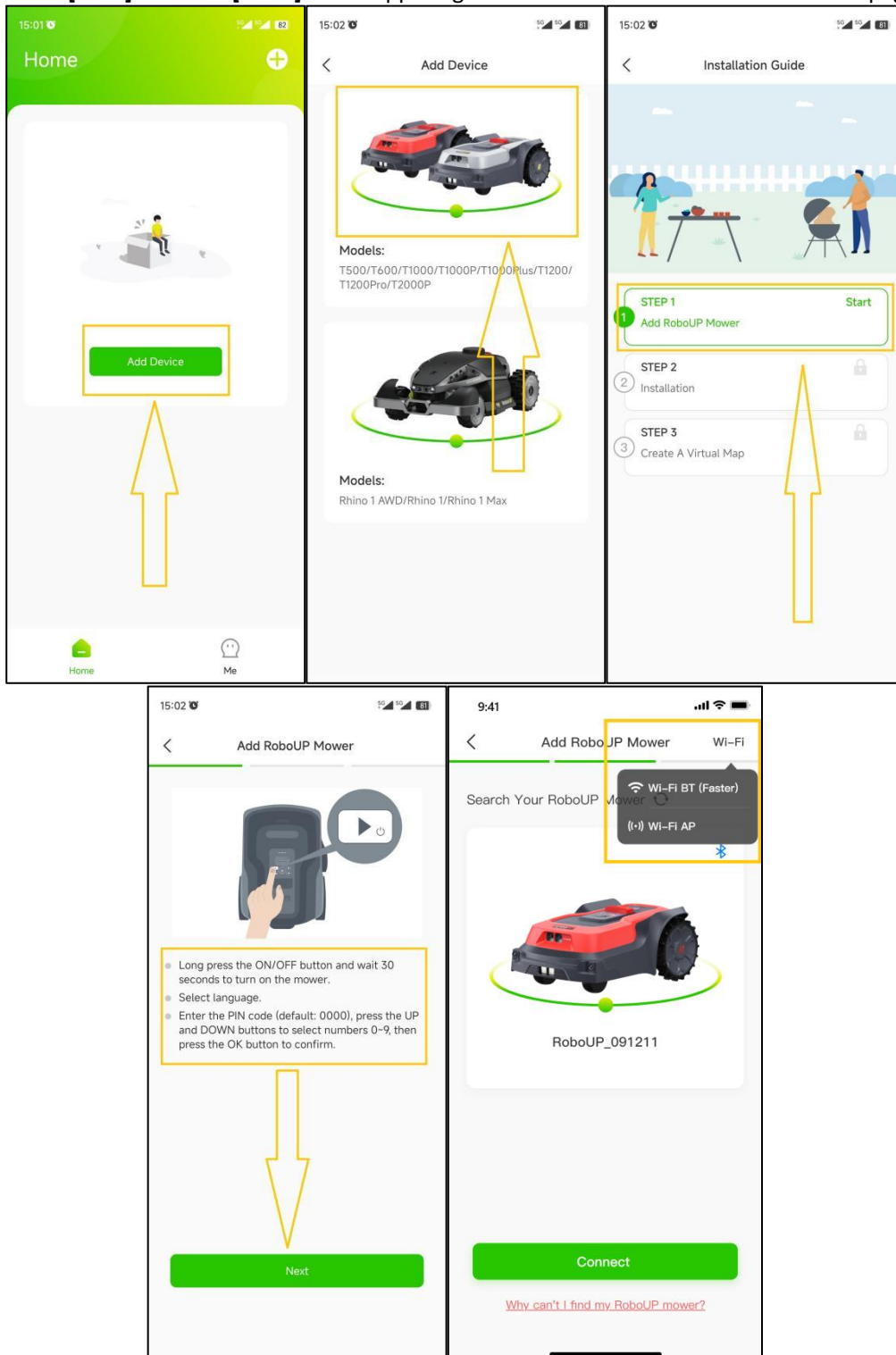
- 1) Click the **[Delete]** or **trash-can** icon under the mower on the home page. Click **[Confirm]** on the pop-up window to delete the phone's Bluetooth connection with the mower.



5 Wi-Fi Connection

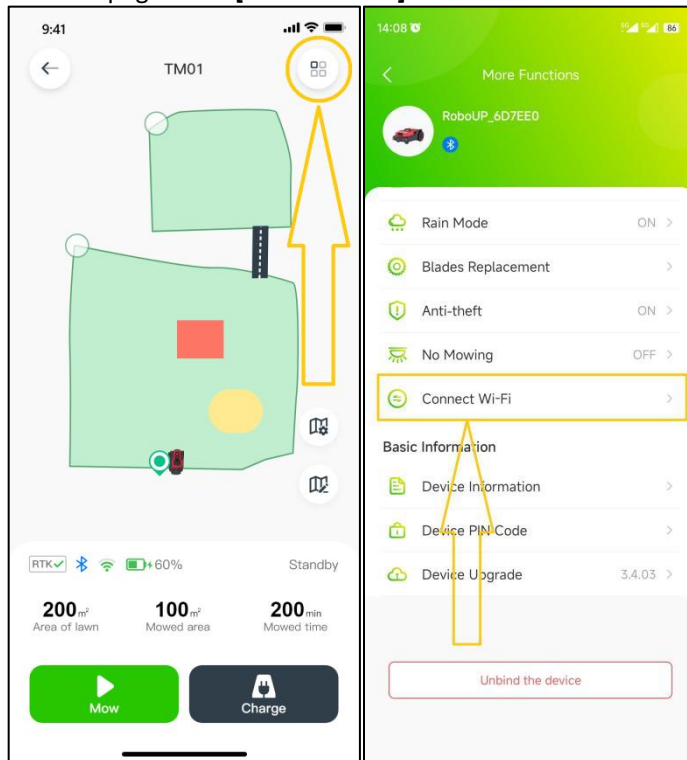
Note: The mower's Bluetooth connection enables you to create boundary and passage maps, set mowing parameters and schedules and much more. In case you want to restore the mower to factory default settings or install "Over-the-Air" firmware upgrades (OTA FW) refer to the following steps to set up a Wi-Fi connection.

- 1) **If there is no Bluetooth connection established:** Tap **[Add Device]** or the **[+]** icon on the APP home page. Select your mower model. Click **[Step 1: Add your RoboUP Mower]**. Follow the prompts to power up the mower. Click **[Next]** and click **[Wi-Fi]** in the upper right corner to enter the Wi-Fi connection page.



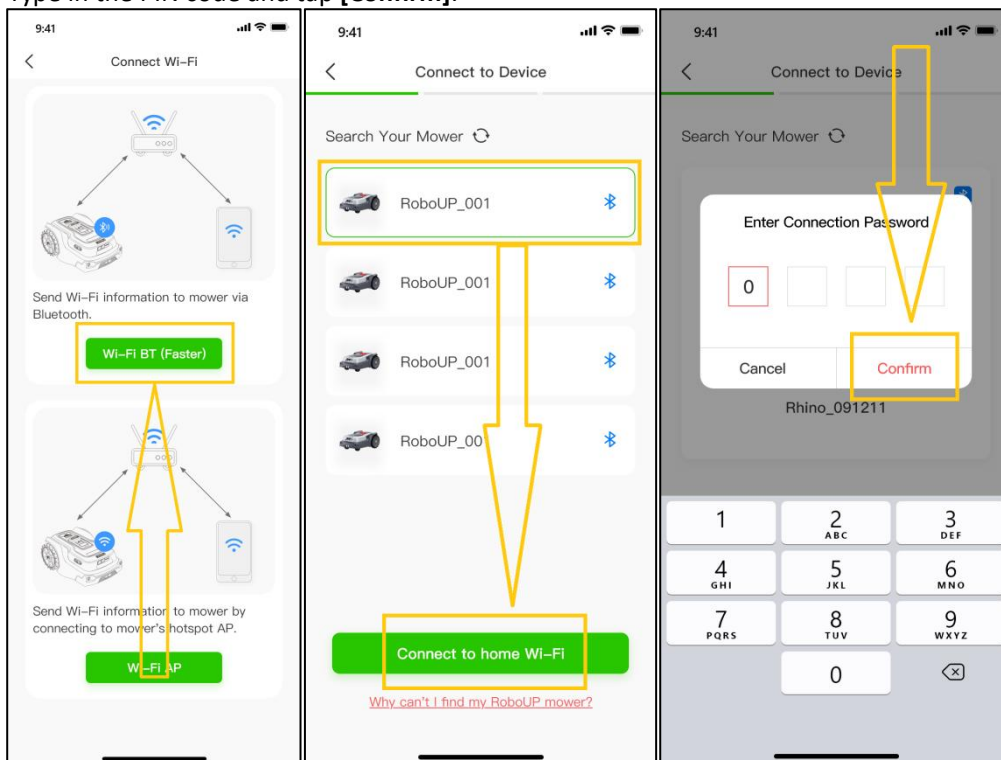
- 2) **If a Bluetooth connection is active already:** Click the mower and tap the **[More Functions]** icon on the top

right corner to enter the next page. Click **[Connect WiFi]** to enter the Wi-Fi connection page.



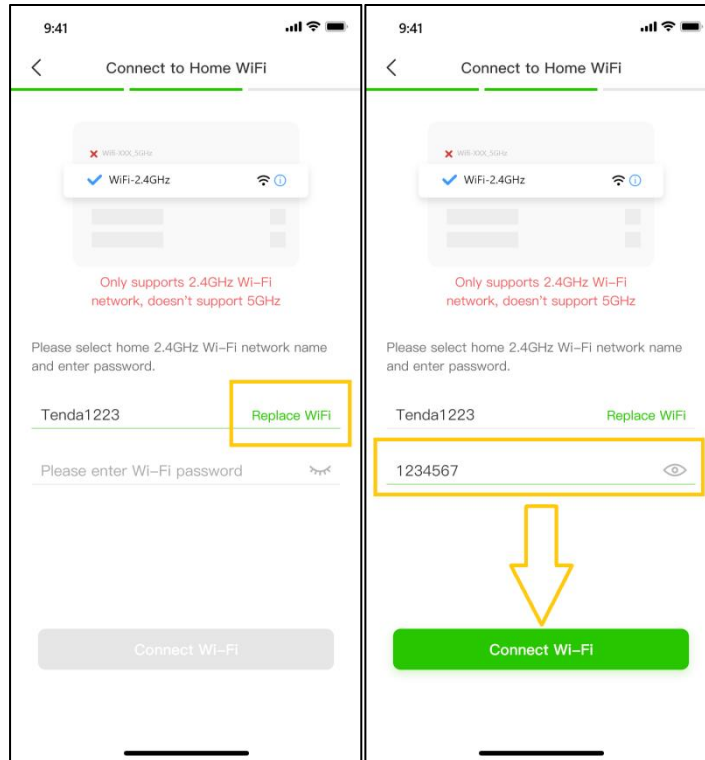
5.1 Connect Wi-Fi by Bluetooth:

- 1) Select **[Wi-Fi BT(Faster)]** to enter **[Connect to device]** page. Select the mower and click **[Connect to home Wi-Fi]**. Type in the PIN code and tap **[Confirm]**.

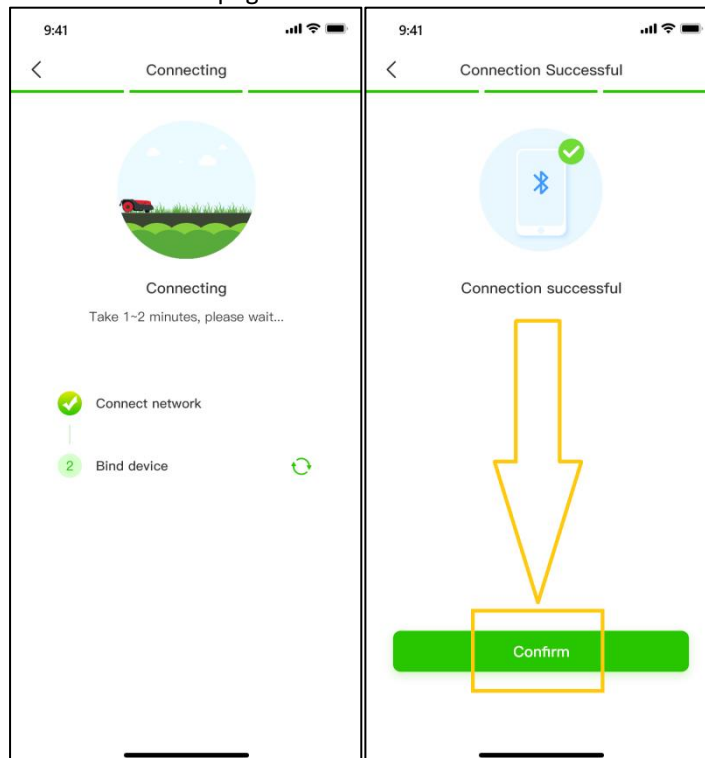


- 2) Enter the **[Connect to home Wi-Fi]** page, check whether the chosen Wi-Fi network is running on 2.4GHz frequency (5GHz networks are NOT supported).
 - a. If **NO**: click **[Replace Wi-Fi]** and select another available 2.4GHz network, enter the correct password and tap **[Connect Wi-Fi]**.

b. If **YES**: enter the correct password and tap **[Connect Wi-Fi]**.



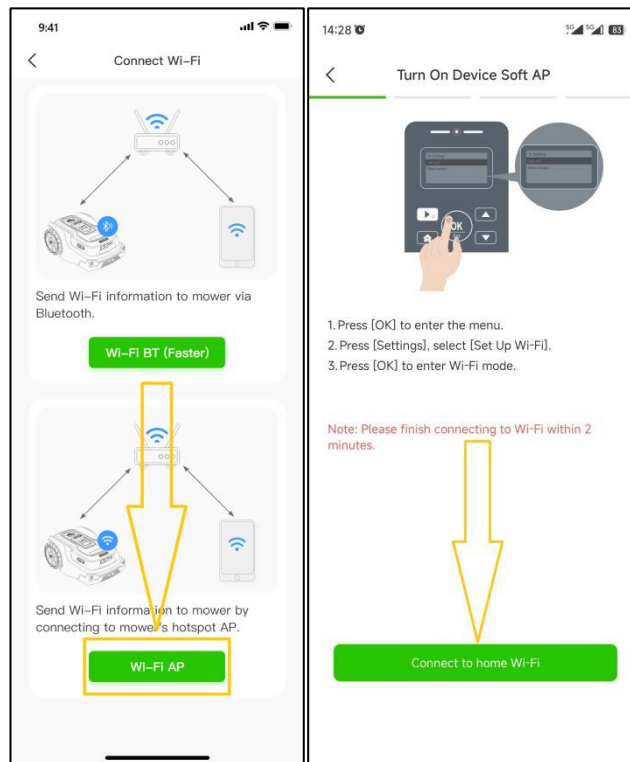
3) The **[Connecting]** page informs about the connection status. Once connected and bound successfully, tap **[Confirm]** to go back to the APP home page.



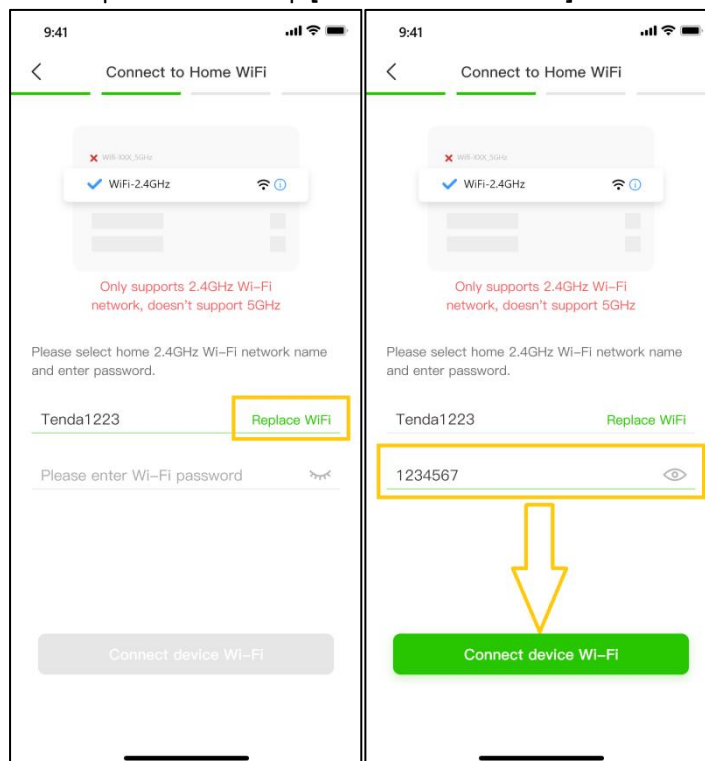
4) If the connection fails, try again and follow the steps above.

5.2 Connecting Wi-Fi by using mower Soft Access Point (AP):

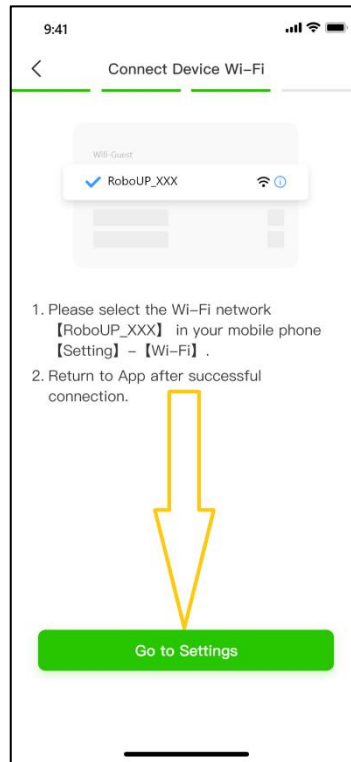
1) Select **[Wi-Fi AP]** to enter **[Turn On Device Soft AP]** page. Follow the prompts to turn on the mower's Soft AP. Click **[Connect to home Wi-Fi]**



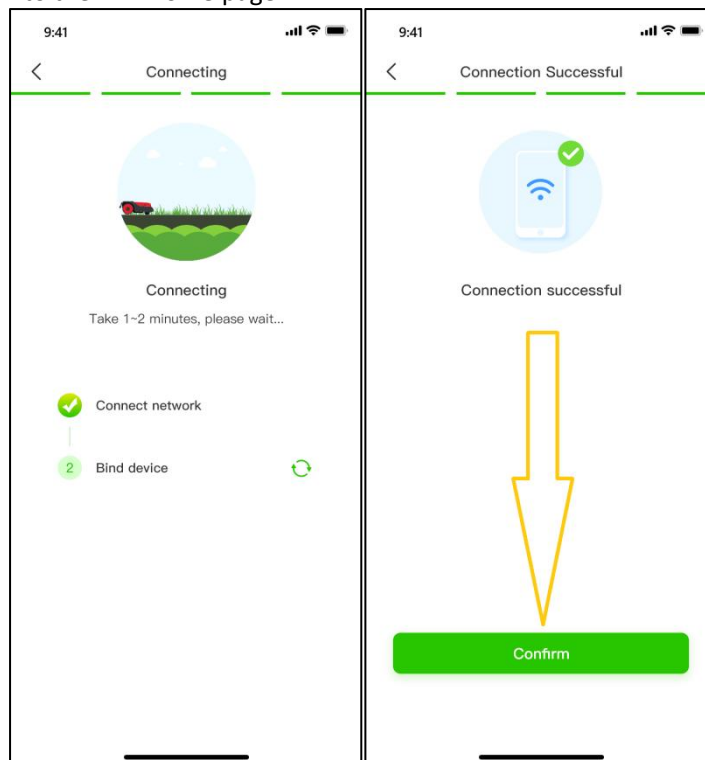
- 2) Enter the **[Connect to home Wi-Fi]** page, check whether the Wi-Fi network is running on 2.4GHz signal frequency (5GHz networks are NOT supported)
 - a. If **NO**: click **[Replace Wi-Fi]** and select another available 2.4GHz network, enter the correct password and tap **[Connect Device Wi-Fi]**.
 - b. If **YES**: enter the correct password and tap **[Connect Device Wi-Fi]**.



- 3) Click **[Go to Settings]** to open the smartphone's Wi-Fi settings interface. Select the mower's Soft AP. Get back to the RoboUP® App.



- 4) On the **[Connecting]** page the connection status is shown. Once the connection and binding is successful, tap **[Confirm]** and return to the APP home page.



- 5) If the connection fails, try again and follow the steps above.

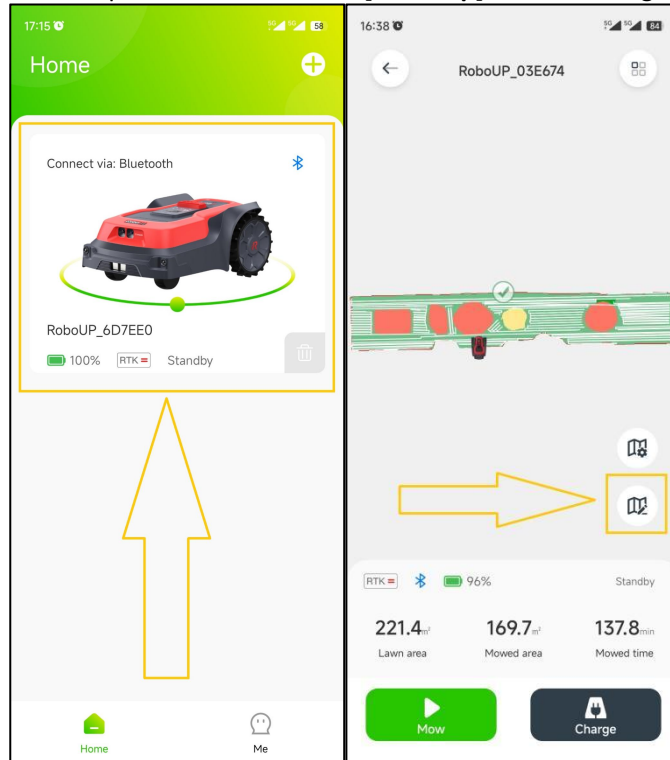
6 Map Editing

In case you need to edit an existing map, the tutorials below may be helpful.

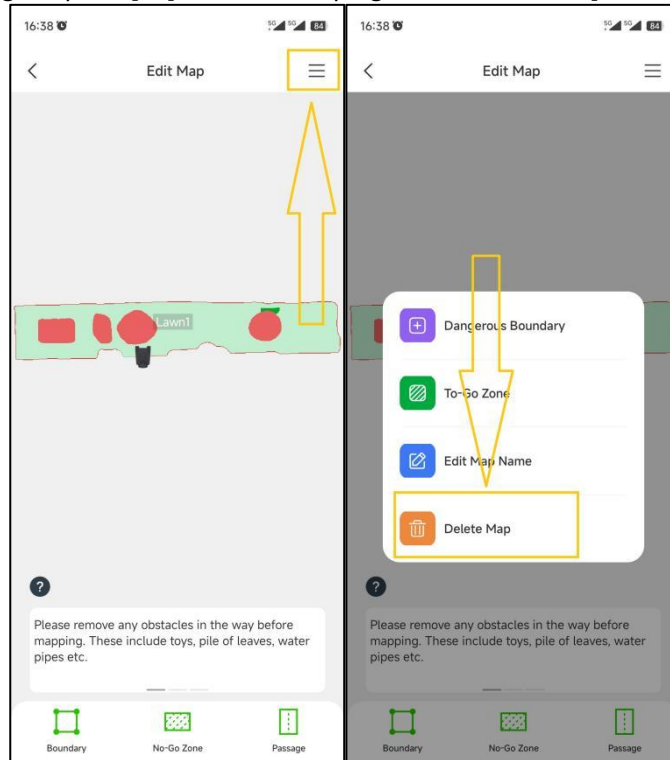
6.1 Delete a Map

If you need to delete the whole map, or just parts (like No-go-Zones, or passages) of it, refer to the following steps:

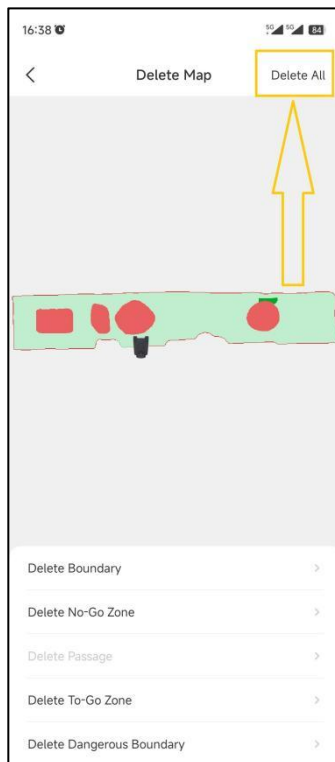
- 1) Open the RoboUP® APP and tap the device. Click the **[Edit map]** icon on the right side of the screen.



- 2) On the **[Edit Map]** page, tap the **[☰]** icon in the top right corner. Choose **[Delete Map]**.

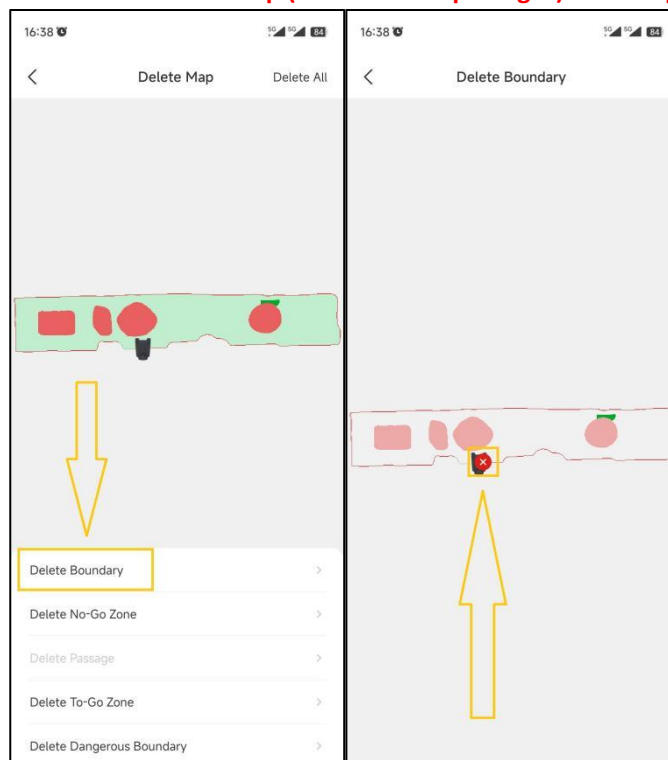


- 3) On the **[Delete Map]** page, choose the desired operation according to your needs:
 - a. **Delete the whole map:** tap **[Delete All]** in the top right corner. The whole map will be deleted. This is suitable for building a new map in a different/new lawn.



- b. **Delete parts of the map:** tap the corresponding option at the bottom (for example: if you need to delete boundaries, tap **[Delete boundary]**). On the next page, click the **red [X]** icon on the boundary that you want to delete.

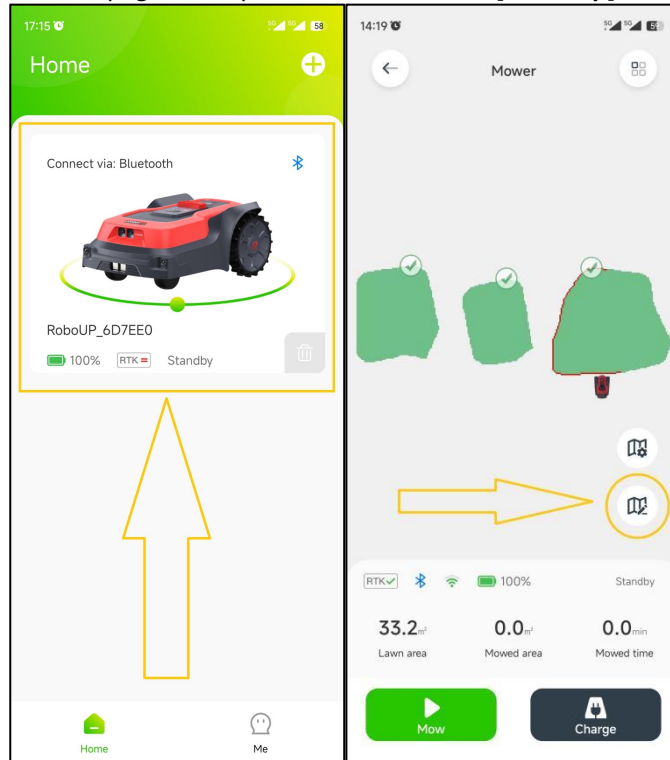
Note: if the main boundary is deleted the whole map (all zones and passages) will disappear.



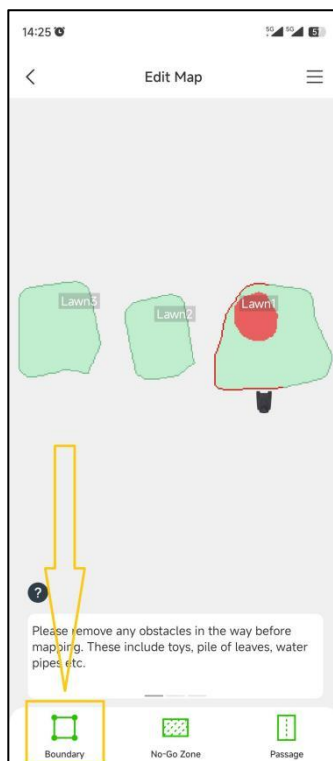
6.2 Add a Boundary

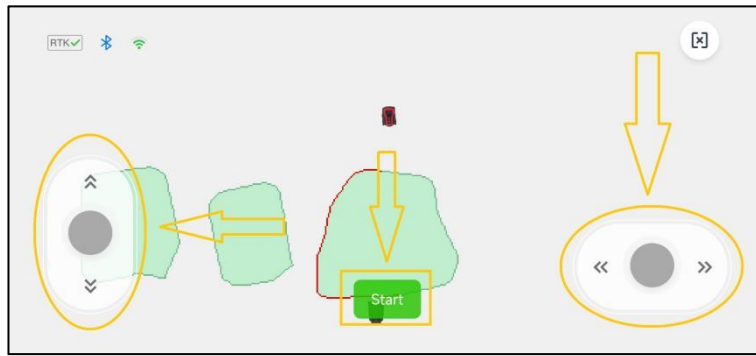
If you want to add a boundary for a new area to an existing map or you need to create a entirely new map, refer to the following steps how to edit a map:

- 1) Open the RoboUP® APP home page and tap the device. Click the **[Edit map]** icon.



- 2) On the **[Edit map]** page, click **[Boundary]** at the bottom. The controller page will pop up. If the mower is not at the spot, where you want to add a boundary, use the thumb sliders and steer the mower to the desired starting point. Then tap **[Start]** to go next.

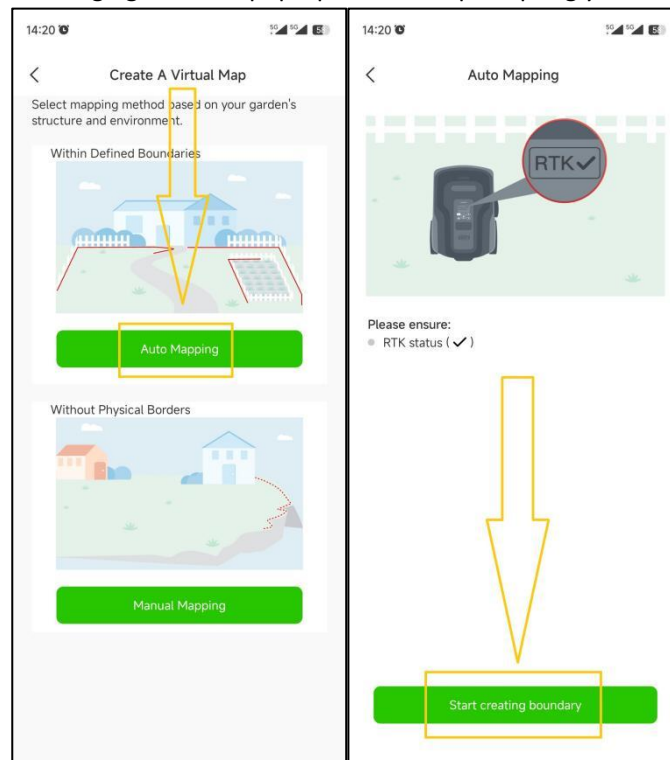


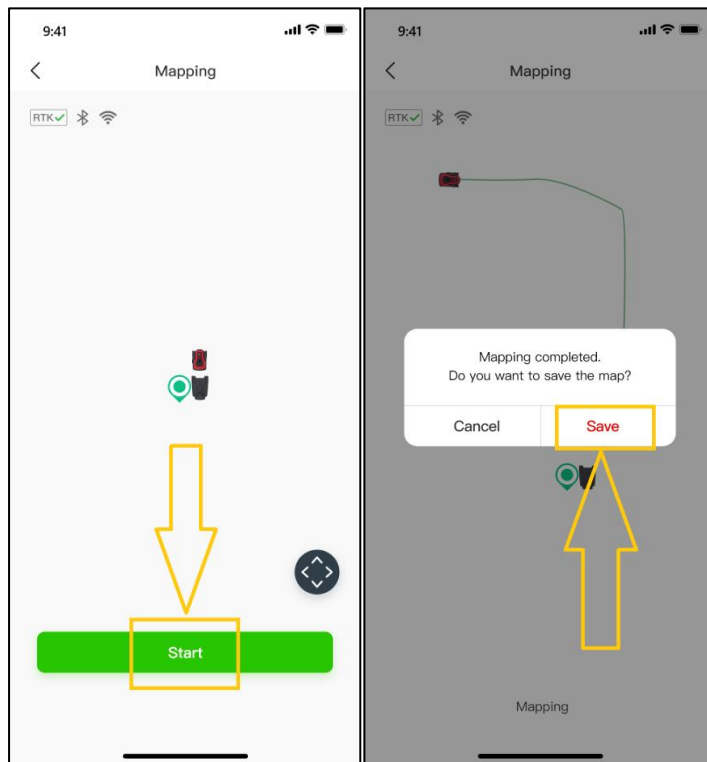


- 3) On the **[Create a Virtual map]** page, choose the proper method of mapping according to the lawn environment: Auto mapping or Manual mapping.

Note: if the new boundary is the main one (which means the charging station is included), the mower will do auto calibration during the process. If it is not the main boundary, the mower will not do an auto calibration.

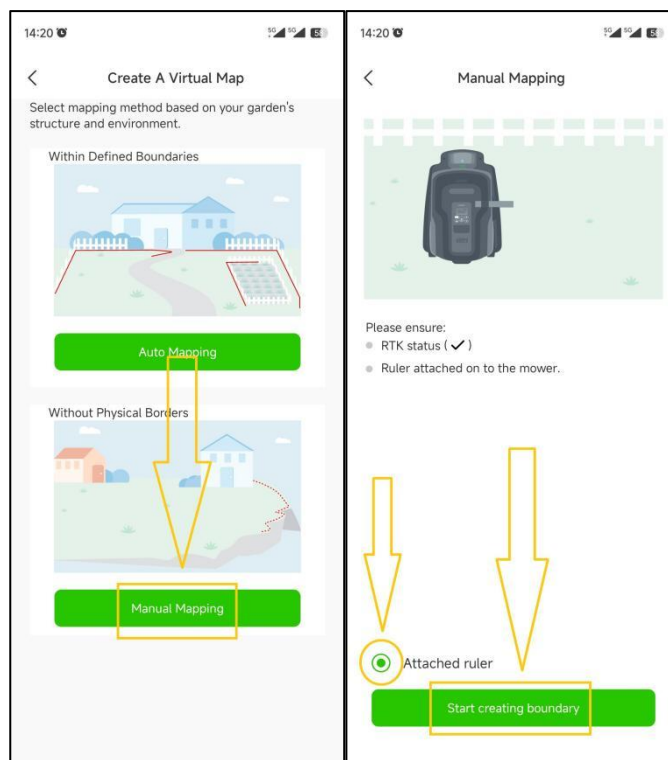
- a. **Auto mapping:** If the lawn has visible physical borders (fences, walls,...) click **[Auto mapping]** to enter the next page **[Mapping]**. Make sure the **RTK icon** is ✓. Click **[Start create boundary]**. When creating a new main boundary the mower will calibrate once automatically. Thereafter it will drive out of the charging station and automatically build a boundary along the edges of the borders. When the mower is re-approaching the charging station a pop-up window is prompting you to save the map. Click **[Save]**.

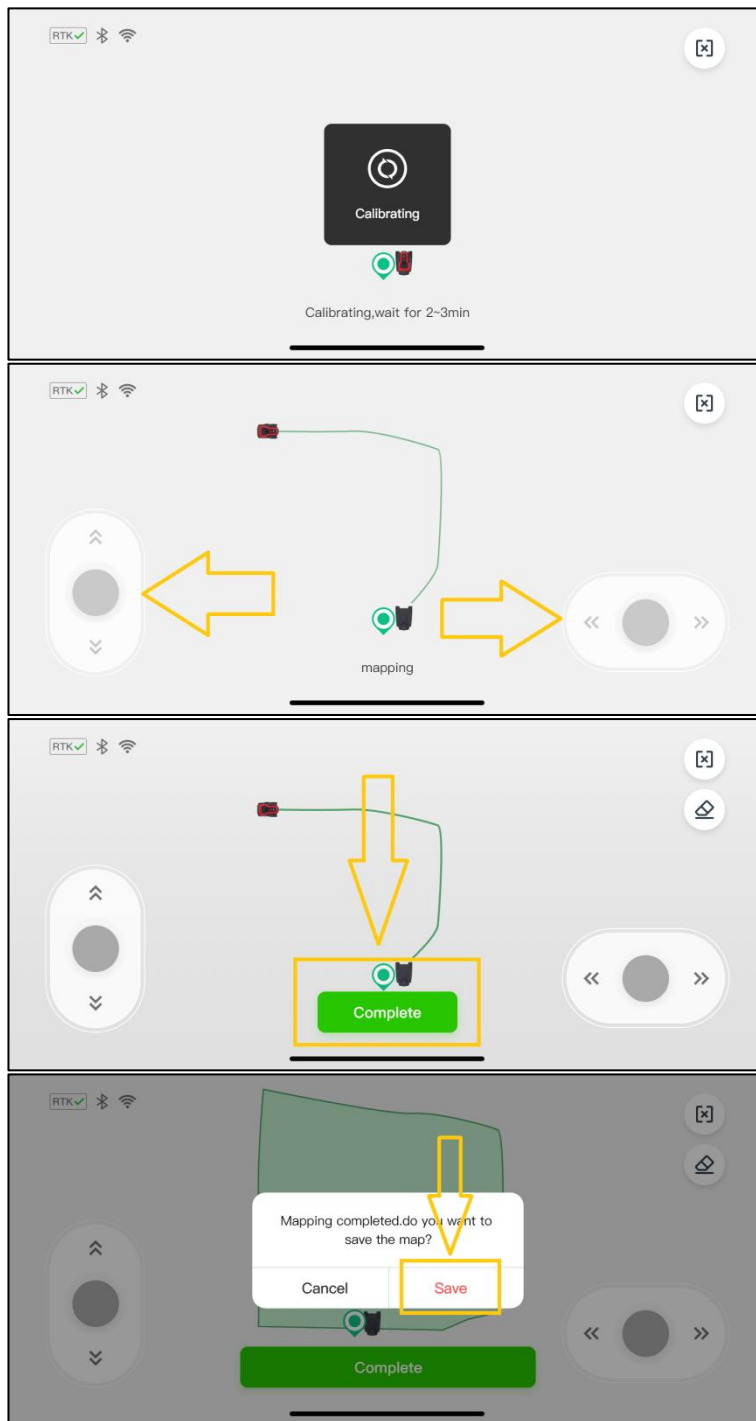




- b. **Manual mapping:** If the lawn has no physical borders, choose **[Manual mapping]** to enter the next page. Make sure the **RTK icon** is \checkmark . If needed install the carton ruler (see packaging) and check \odot button at the bottom. Click **[Start create boundary]** to enter the **[Manual Mapping]** page. Once the mower finished calibration, use thumb sliders on the controller page and steer the mower manually building a boundary path along the edge. When the mower is re-approaching the charging station a pop-up window is prompting you to save the map. Click **[Complete]** and **[Save]**.

Note: For a stable Bluetooth connection during mapping we recommend you walking behind the mower closely (max. 3m distance).

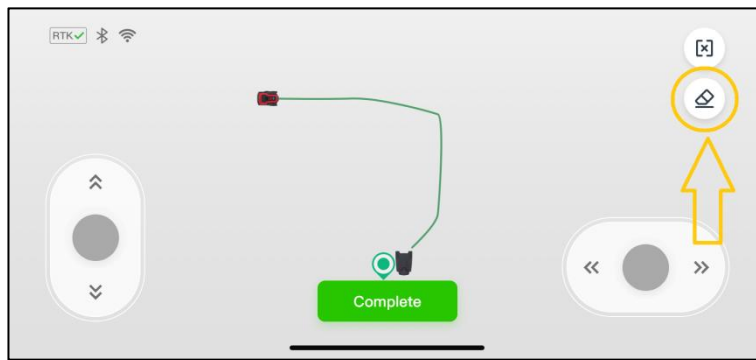




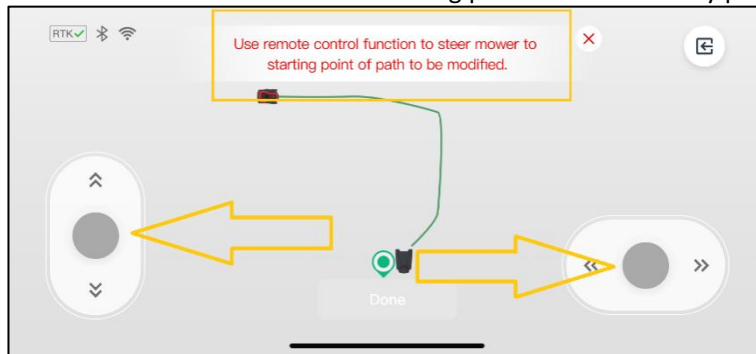
6.3 Map Erasing

Note: Presently this function is only supported in manual mapping. In case the mower has problems to work along the path of the boundary you need to fix this. Start this function and steer the mower to the starting point that needs to be modified.

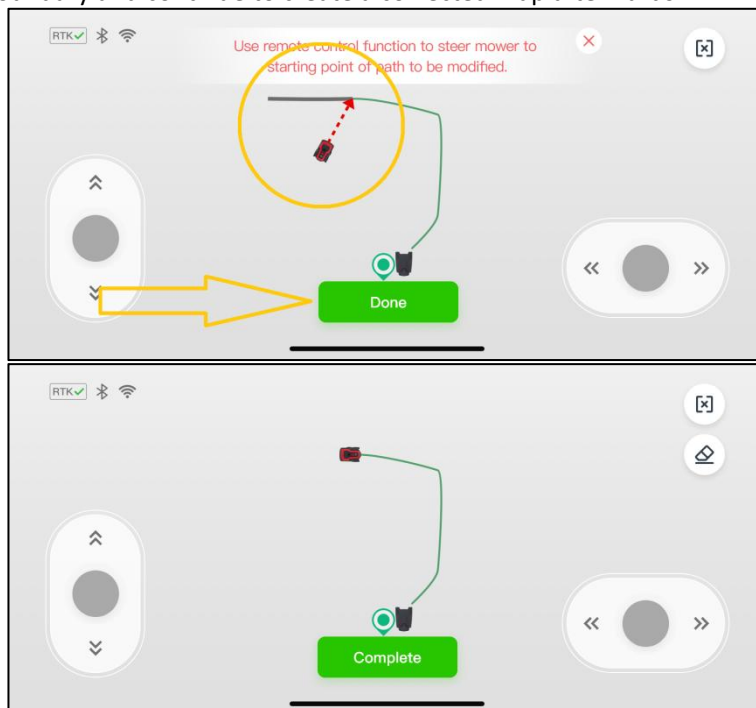
- 1) On the manual mapping page, click the **[Eraser]** icon in the upper right corner to enter the map modification page.



- 2) Use the thumb sliders and steer the mower to the starting point of the boundary path you want to modify.



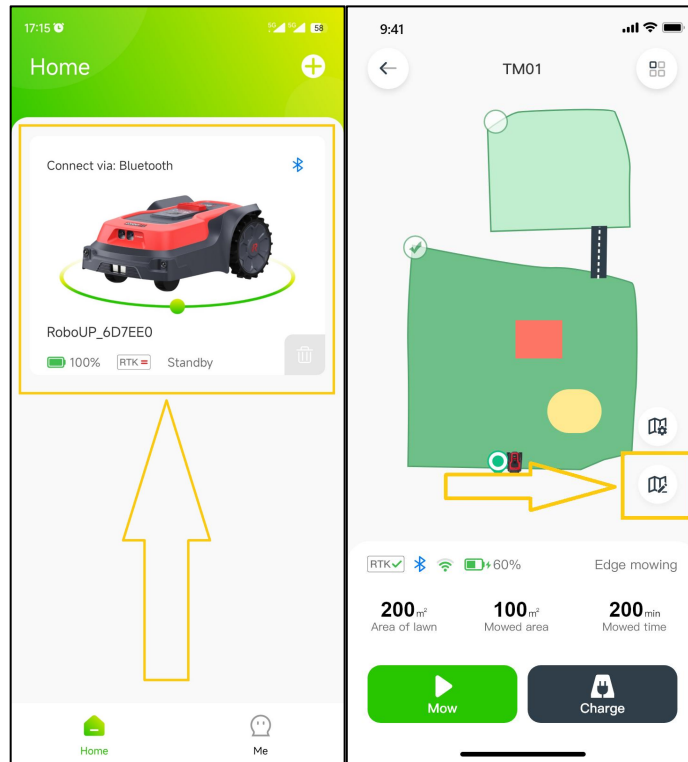
- 3) Steer the mower back to the point of the boundary that needs to be modified. Click **[Done]** to erase this segment of the boundary and continue to create a corrected map afterwards.



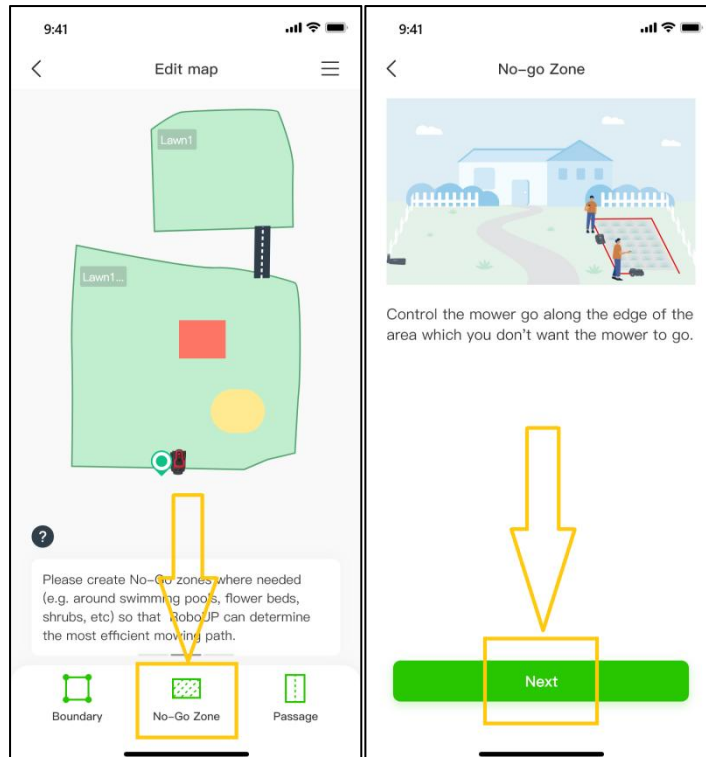
6.4 Create a No-go Zone

If there are trees, swimming pools, trampolines, etc. in the middle of the lawn, it is recommended to create “No-go Zones” instructing the mower to avoid them.

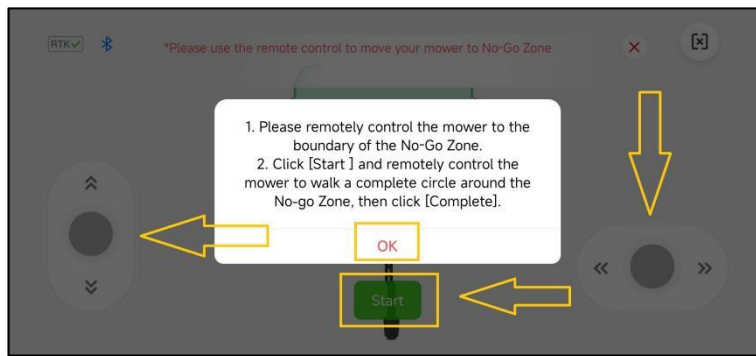
- 1) Open the RoboUP® APP and tap the device on the home page. Click **[Edit map]** icon on next page.



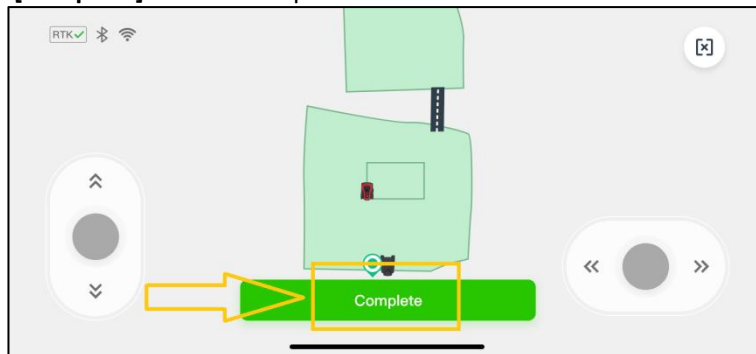
- 2) On the **[Edit map]** page, click **[No-Go Zone]** at the bottom and tap **[Next]** after reading the tip how to go to the controller page.



- 3) If needed use the thumb sliders and steer the mower to the starting point of the boundary path of the future "No-go Zone". Tap **[Start]** to go next.



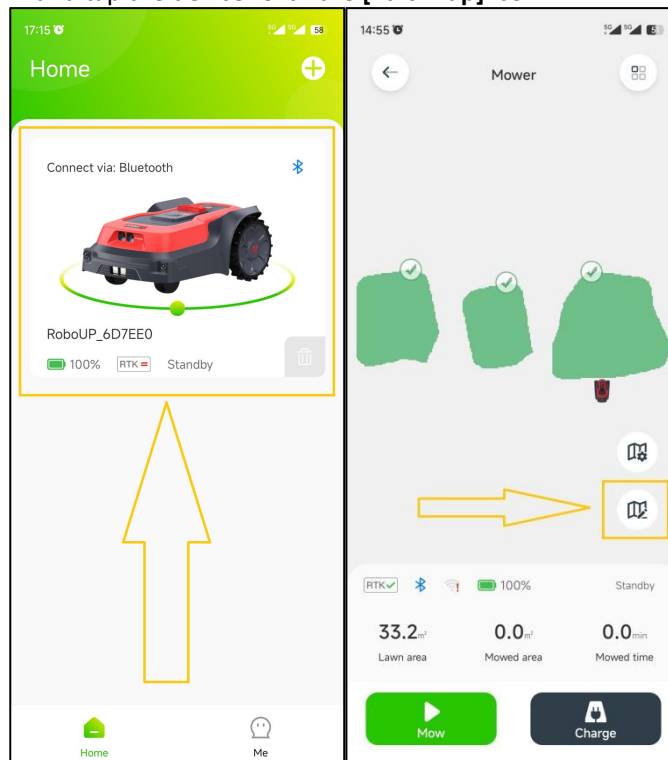
- 4) Use the thumb sliders and steer the mower running full circle around the object that you want to put into a "No-go Zone". Tap **[Complete]** to finish the process.



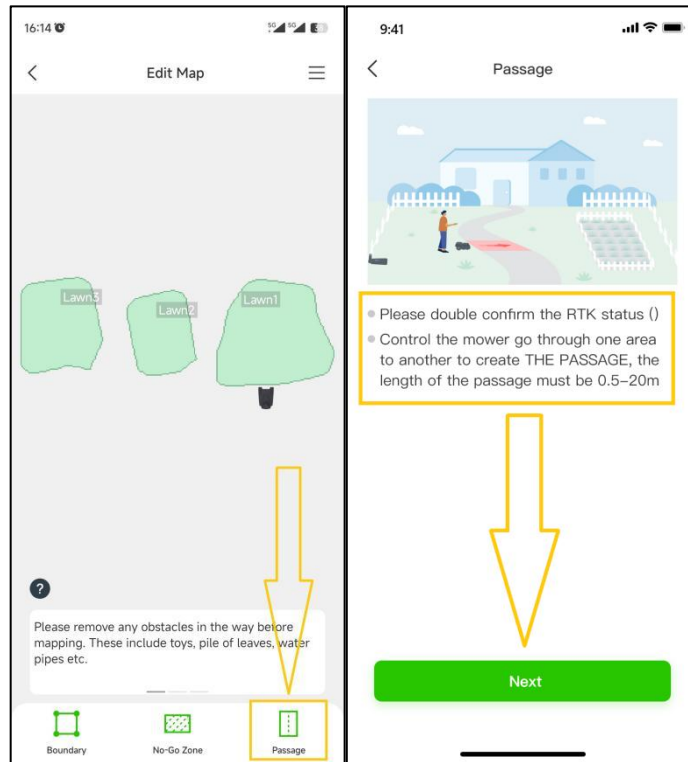
6.5 Create a Passage

If you have created more than one boundary and if there is a physical path for the mower to use travelling from one zone to the other, a **[Passage]** must be created to link the zones:

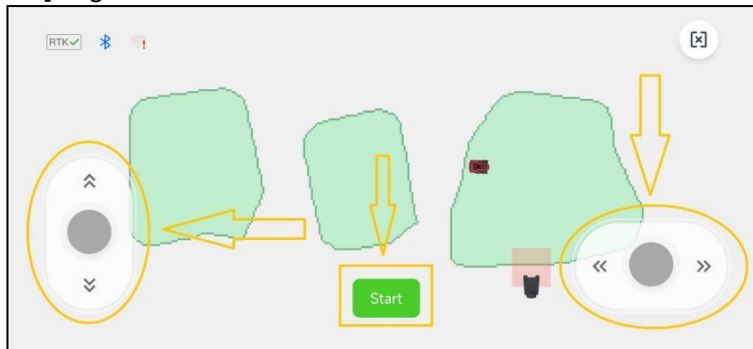
- 1) Open the RoboUP® APP and tap the device. Click the **[Edit Map]** icon.



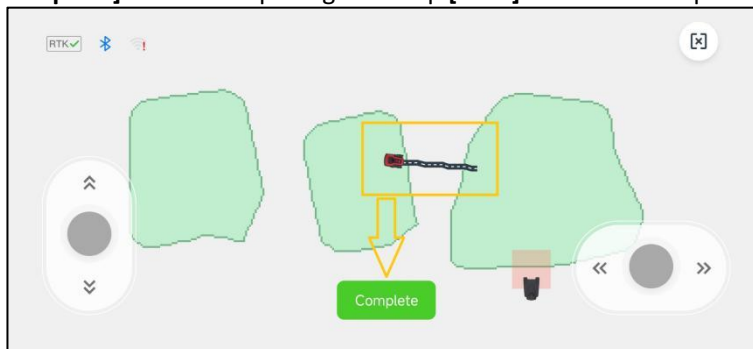
- 2) On the **[Edit Map]** page, click **[Passage]** at the bottom and on next page tap **[Next]** after reading the tip how to go to the controller page.

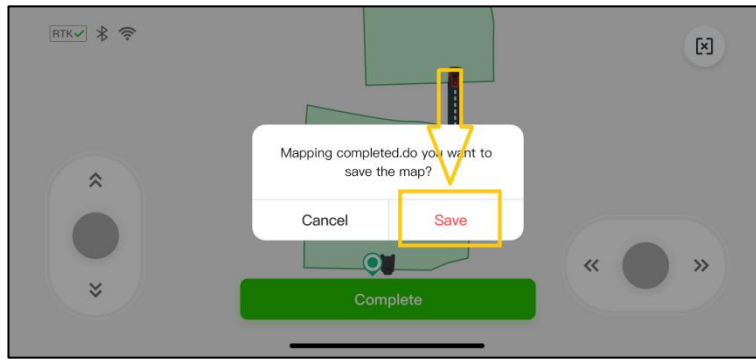


- 3) If the mower is not at the spot where you want to start creating a passage, use thumb sliders and steer it to the start point. Tap **[Start]** to go next.

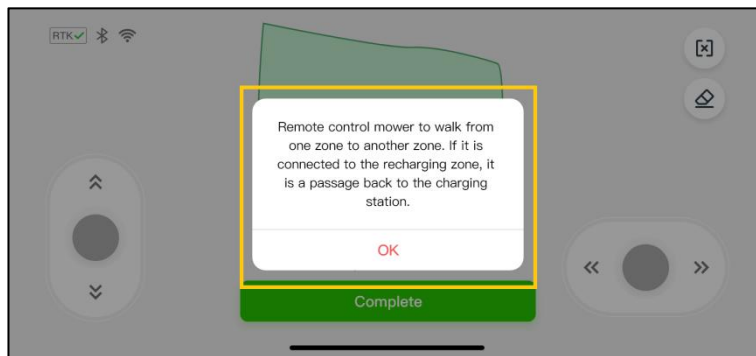


- 4) Use again the thumb sliders to steer the mower through the physical passage to link the two boundary zones on the map. Tap **[Complete]** to save the passage and tap **[Save]** to save the map.

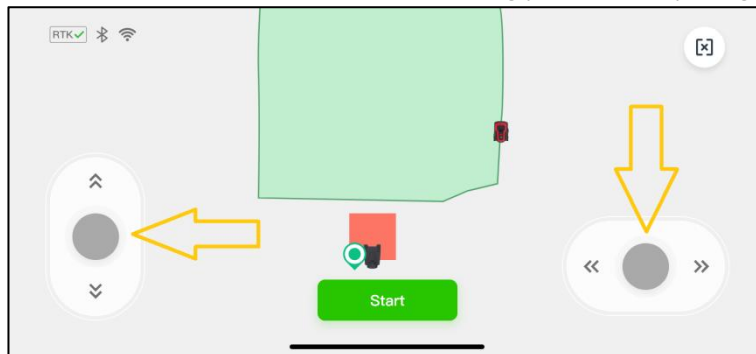




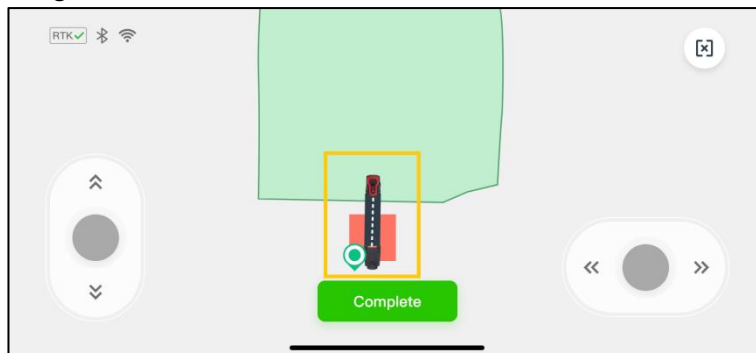
- 5) If the charging station is installed in a zone outside the boundary, it requires a passage between the charging station zone and the boundary zone. Otherwise, the mower will fail returning to the charging station:
- When creating the main boundary, not including the charging station, a pop-up window will prompt you to create a passage after completing the map building. Click **[OK]** to start creating the passage between zones.

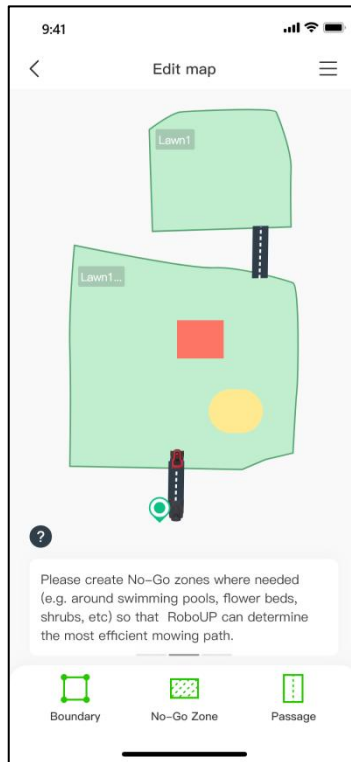


- Use the thumb sliders and steer the mower to the starting point for the passage. Tap **[Start]** to go next.



- Use the thumb sliders again and steer the mower through the passage linking the zones. Tap **[Complete]** to save the passage.

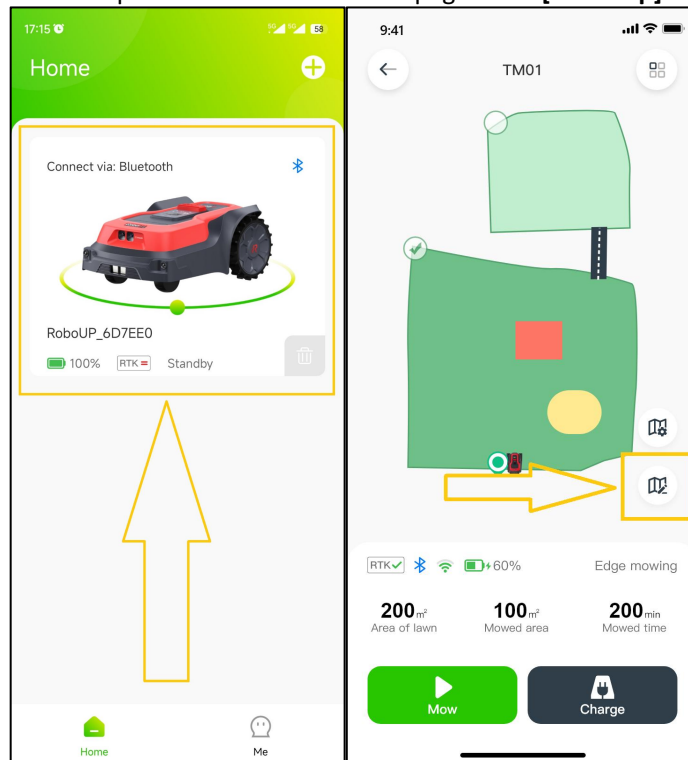




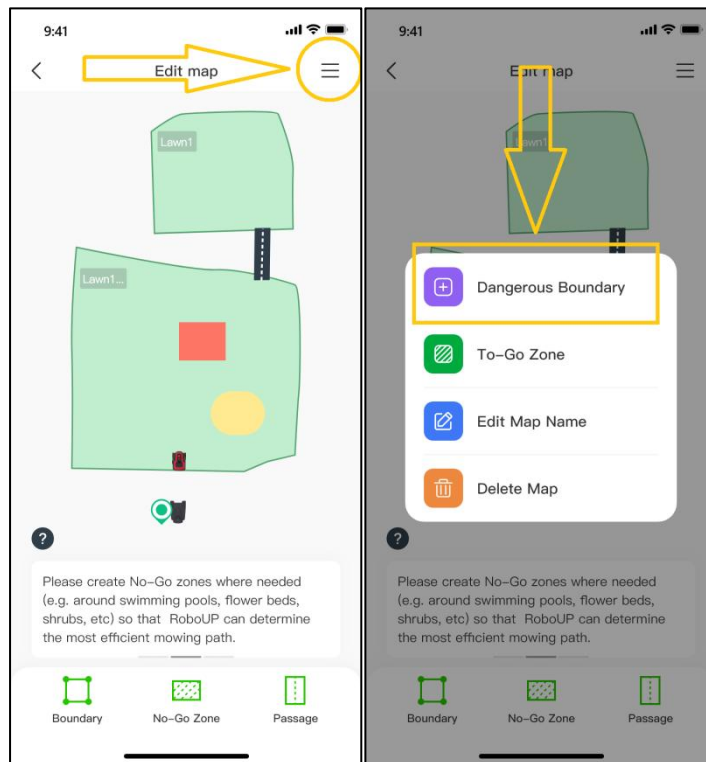
6.6 Dangerous Boundary

If the boundary has no physical border and is near to a cliff, we recommend using the “Dangerous Boundary” function.

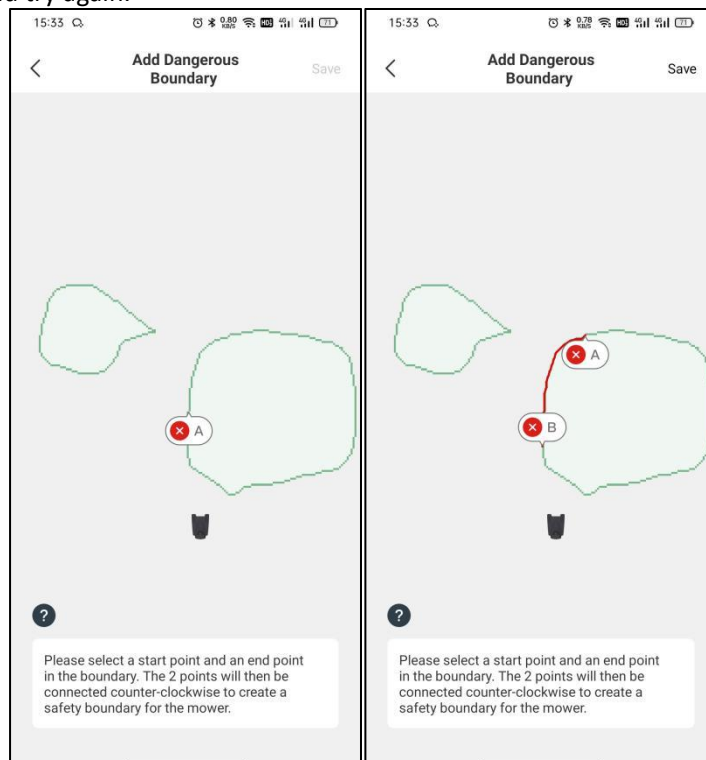
- 1) Open the RoboUP® APP and tap the device on the home page. Click **[Edit map]** icon on next page.



- 2) Tap the **[☰]** icon on the top right corner and on next page select **[Dangerous Boundary]** option.



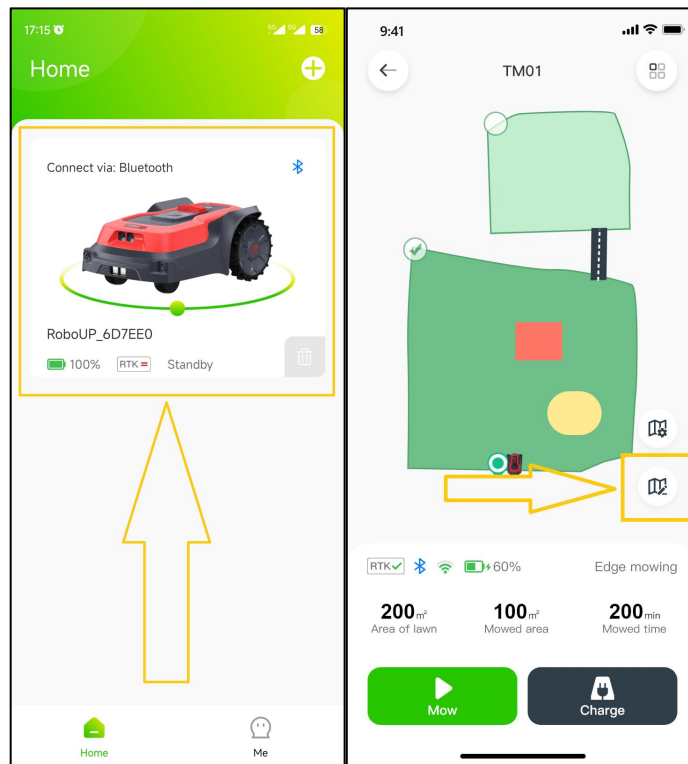
- 3) On the map page **[Add Dangerous Boundary]**, tap on the boundary to set “A” as the start point and “B” as the end point. Tap **[Save]** on the top right corner to save the dangerous boundary. If you need to modify the settings, click **[X]** and try again.



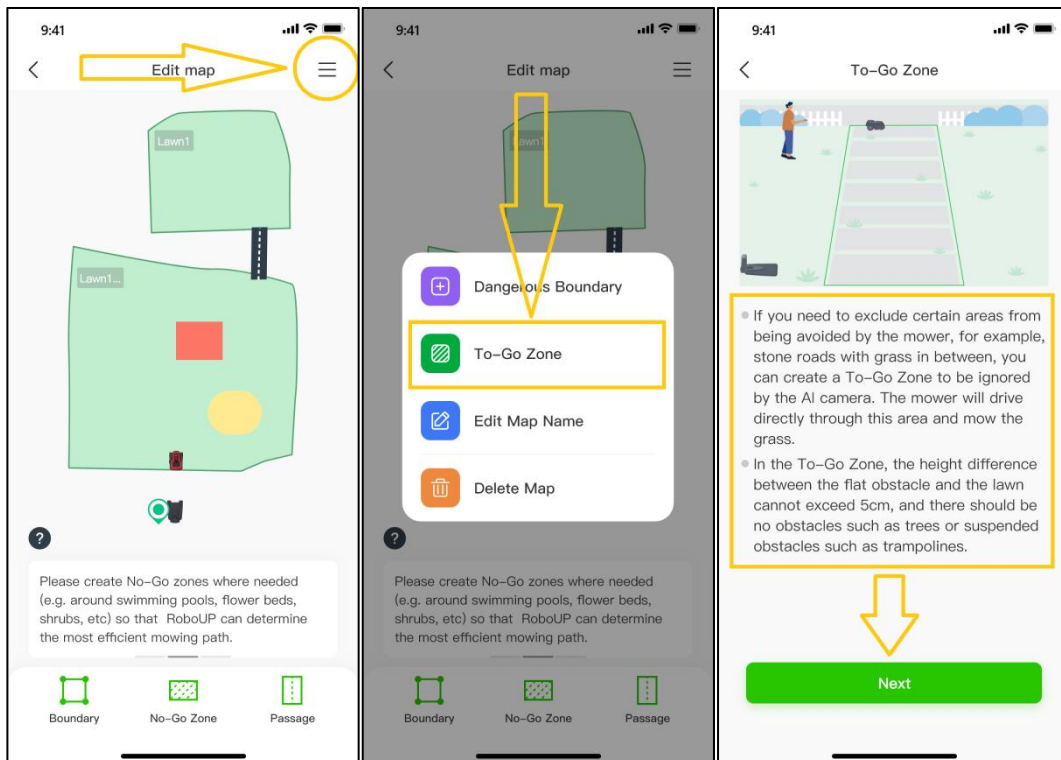
6.7 To-Go Zone

In rare events you may want to turn off RoboUP® AI obstacle avoidance functionality. To give an example: the AI usually avoids a cobblestone area, but you want to instruct the mower to ignore this and cut the grass growing in-between the stones.

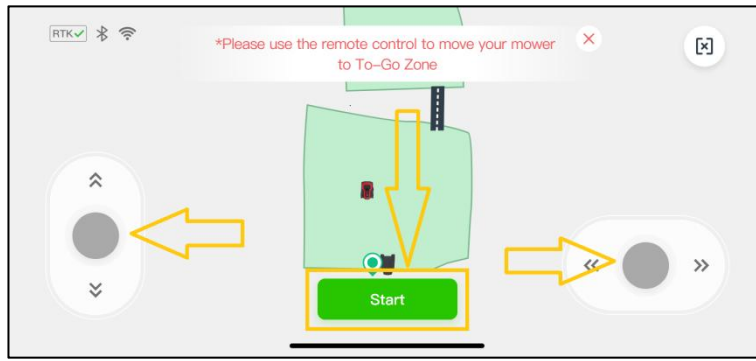
- 1) Open the RoboUP® APP and tap the device on the home page. Click the **[Edit map]** icon on next page.



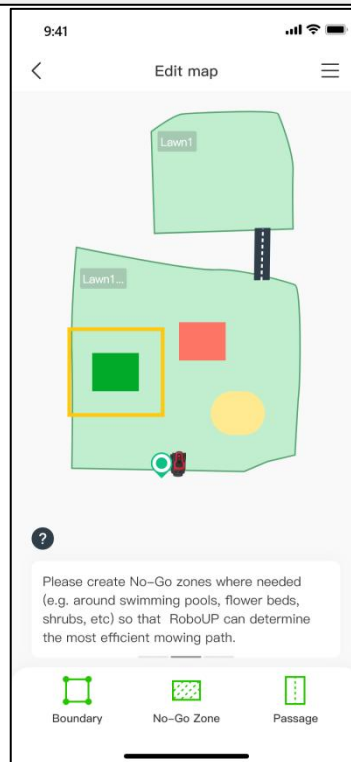
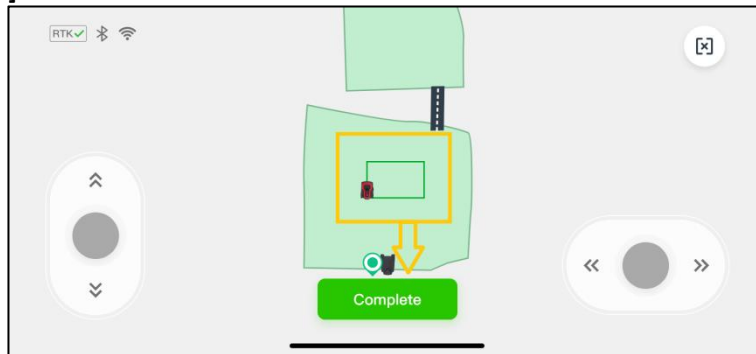
2) Tap the [☰] icon on the top right corner and select the [To-Go Zone] option.



3) If the mower is not at the spot where you want to start creating a To-Go Zone, use the thumb sliders and steer it to the starting point. Tap [Start] to go next.



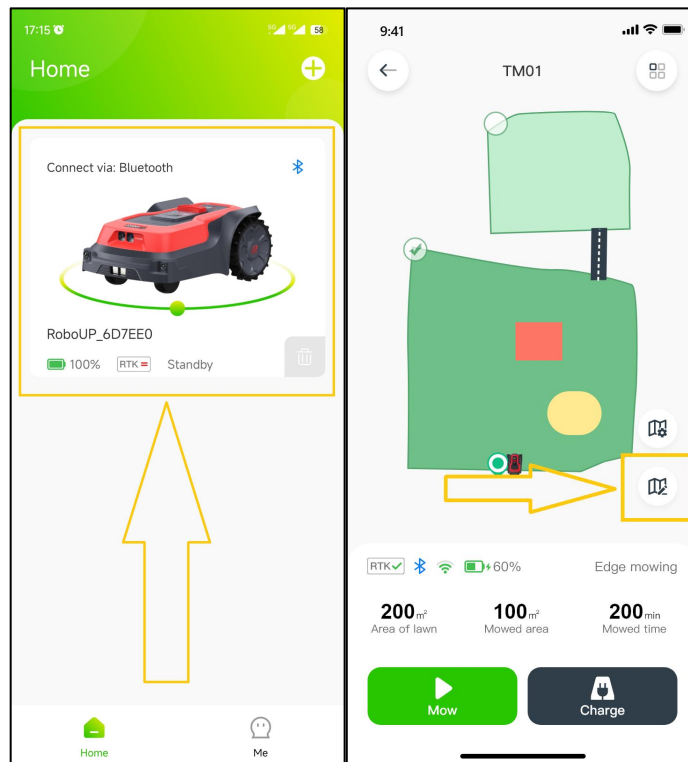
- 4) Use again the thumb sliders and steer the mower to create a boundary of the “To-Go Zone” on the map. After that, tap **[Complete]** to save the “To-Go Zone”.



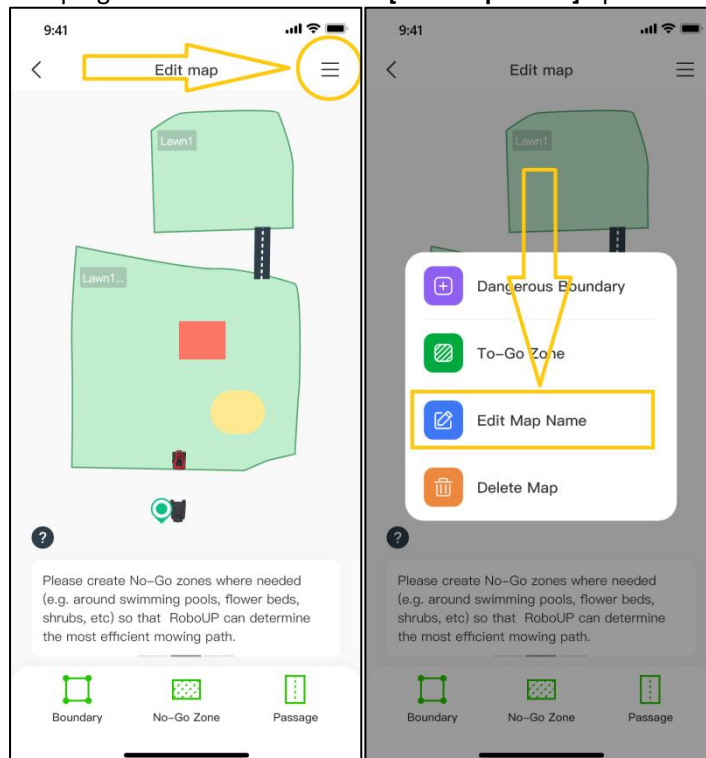
6.8 Edit Map Name

If there is a need to rename the mapped zones, the following steps will help.

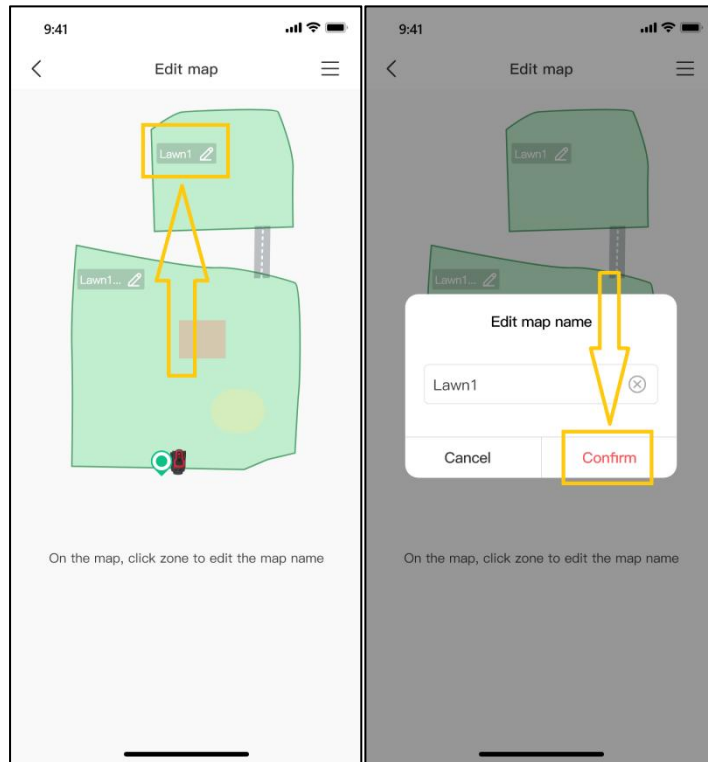
- 1) Open the RoboUP® APP and tap the device on the home page. Click **[Edit map]** icon on next page.



2) Tap the [☰] icon on the top right corner and select the **[Edit map name]** option.



3) On the **[edit map]** page, tap the original name of the zone, then modify it and click **[Confirm]** to save it.

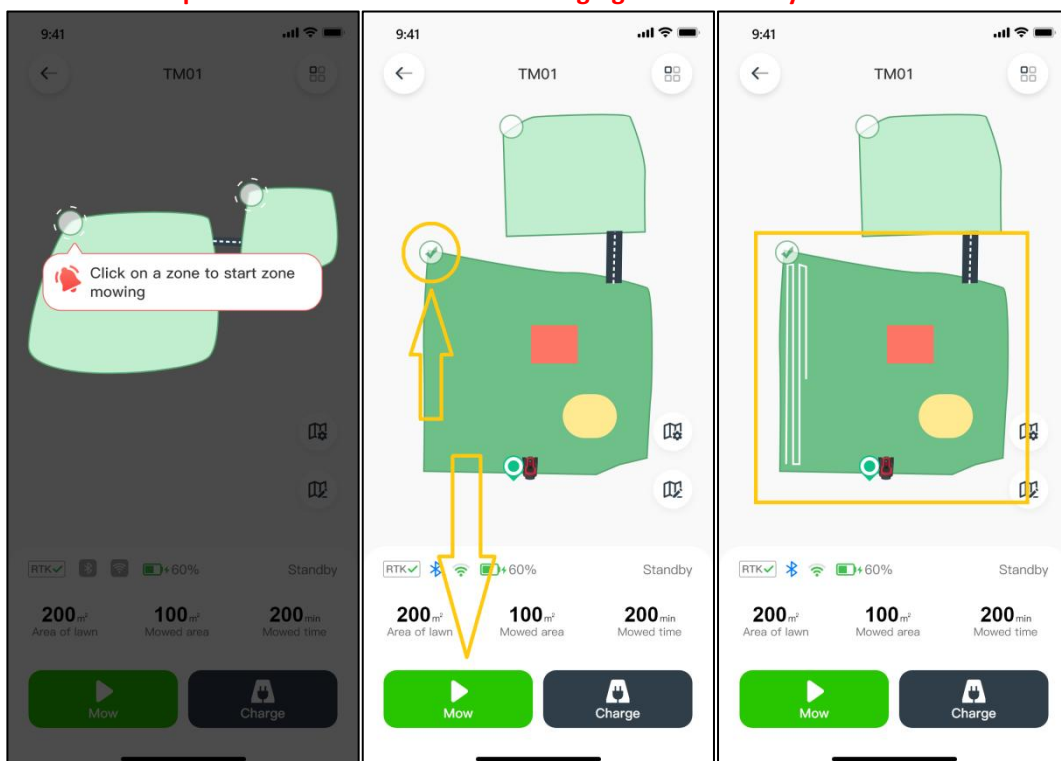


7 Mowing Settings

7.1 Selective Zone Mowing

On the map page, tap the green circle icon of the zone that you want to mow, then click **[Mow]** to mow the selected zone.

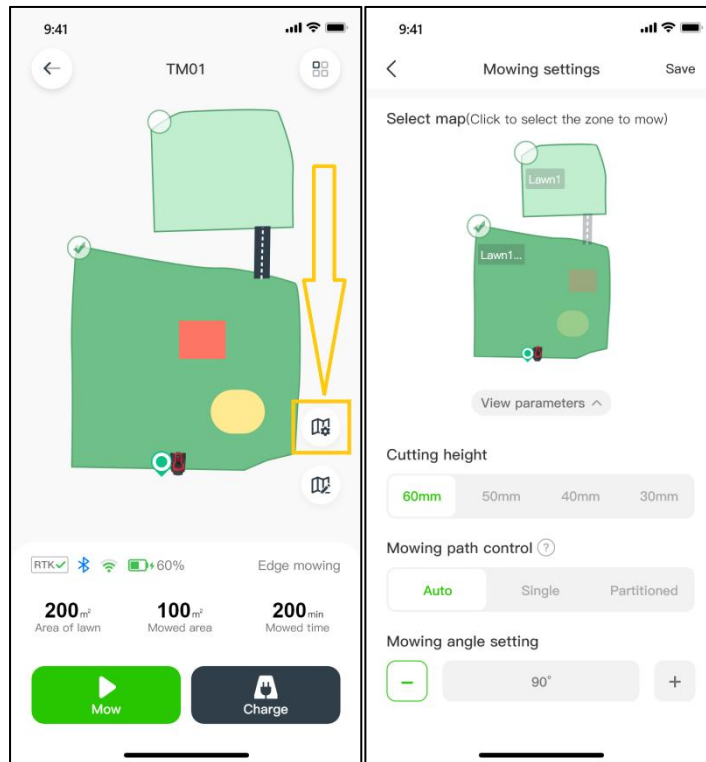
Note: A zone/area cannot be selected when the mower is busy (mowing or returning to the charging station). Wait until the current task is completed or the mower is in the charging station. Now you can chose a zone for mowing.



7.2 Customized Mowing Parameters

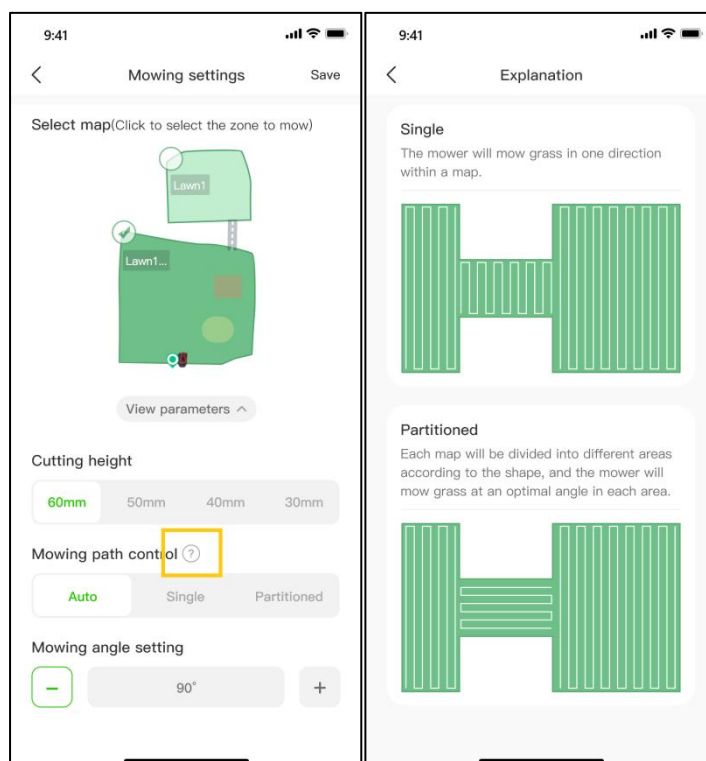
- 1) On the map page, tap the green circle icons of the zones. Click **[Mapping settings]** icon to enter the **[Mowing settings]** page, where you can set the mowing height, mowing path type and mowing angle, either for the whole lawn or selected zones.

Note: If you need to customize the mowing schedule for different zones, refer to 8.3 Schedule Mowing.



Note: Avoid creating customized mowing parameters with an underlying poor quality map, which was created when the RTK signal wasn't "✓" during mapping.

- 2) The mowing angle can only be changed when a **[Single]** mowing path is selected. Click "?" for more detailed info.



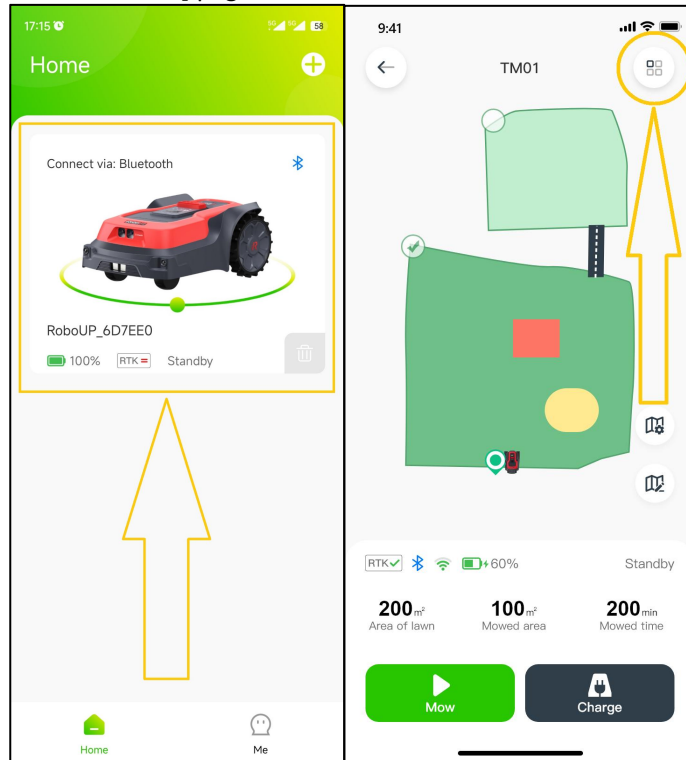
8 More Functions

8.1 Edit Mower Name

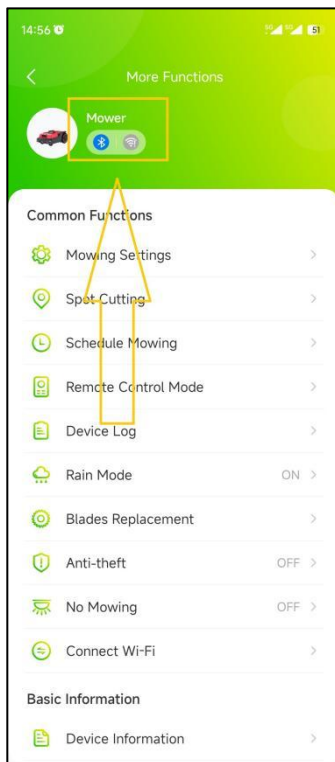
If you want to change the name of the mower, refer to the following steps how to do this.

Note: For changing mower's name it must be connected to Wi-Fi home network.

- 1) Open the RoboUP® APP and tap the mower. On the map page, tap the **[More Functions]** icon on the top right corner to enter the **[More Functions]** page.



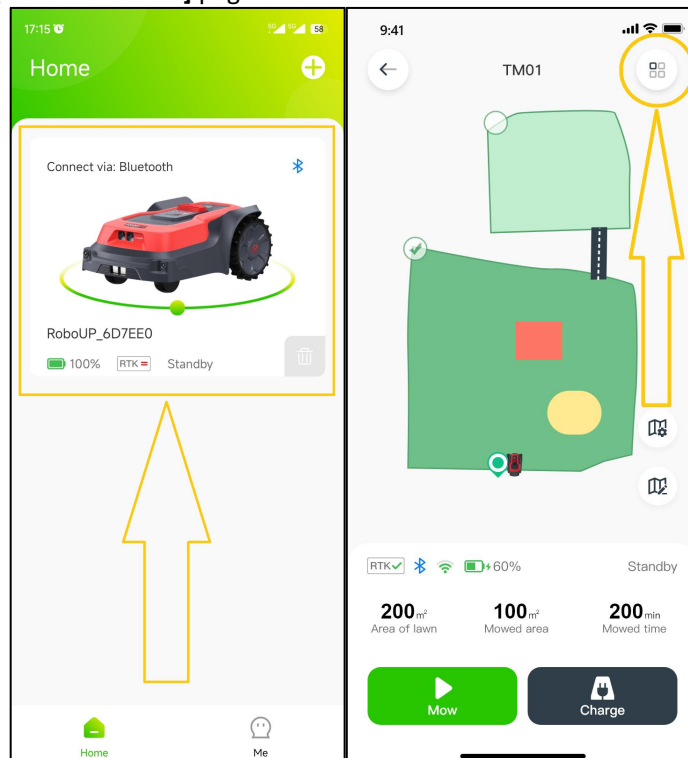
- 2) Click the original name of the mower on the top, modify as needed and tap **[Save]** to save it.



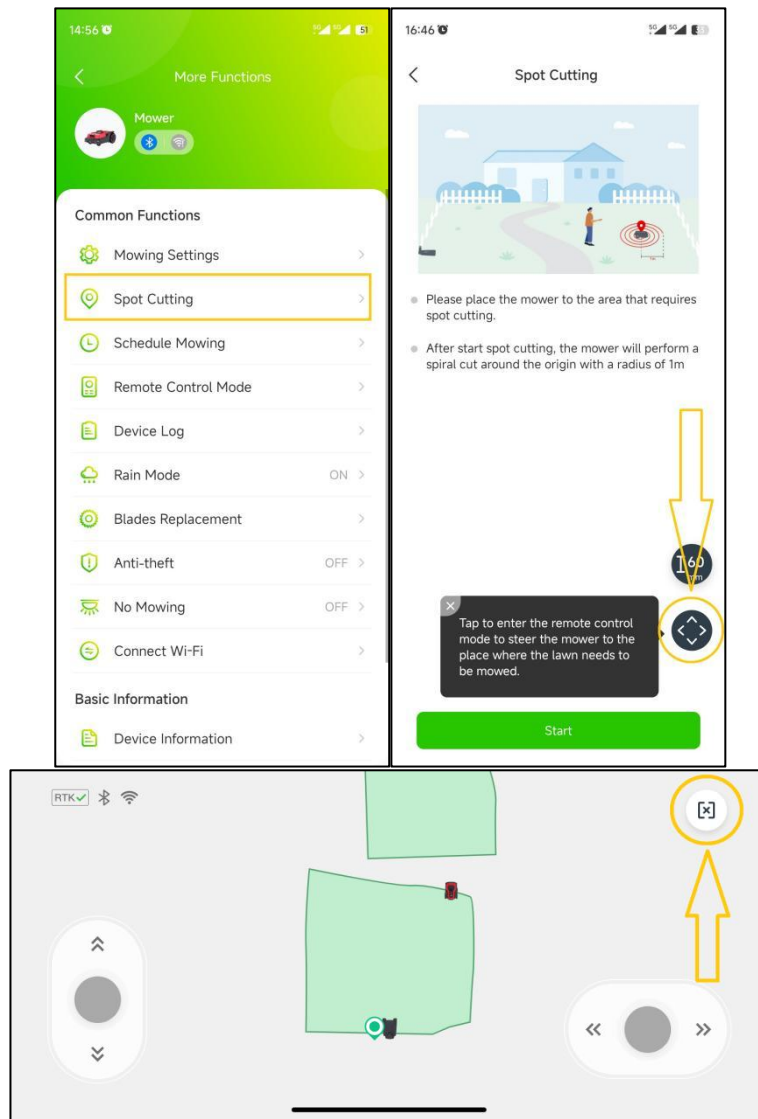
8.2 Spot Cutting

If you want to mow some smaller grass spots, use the **[Spot Cutting]** function according to the following steps:

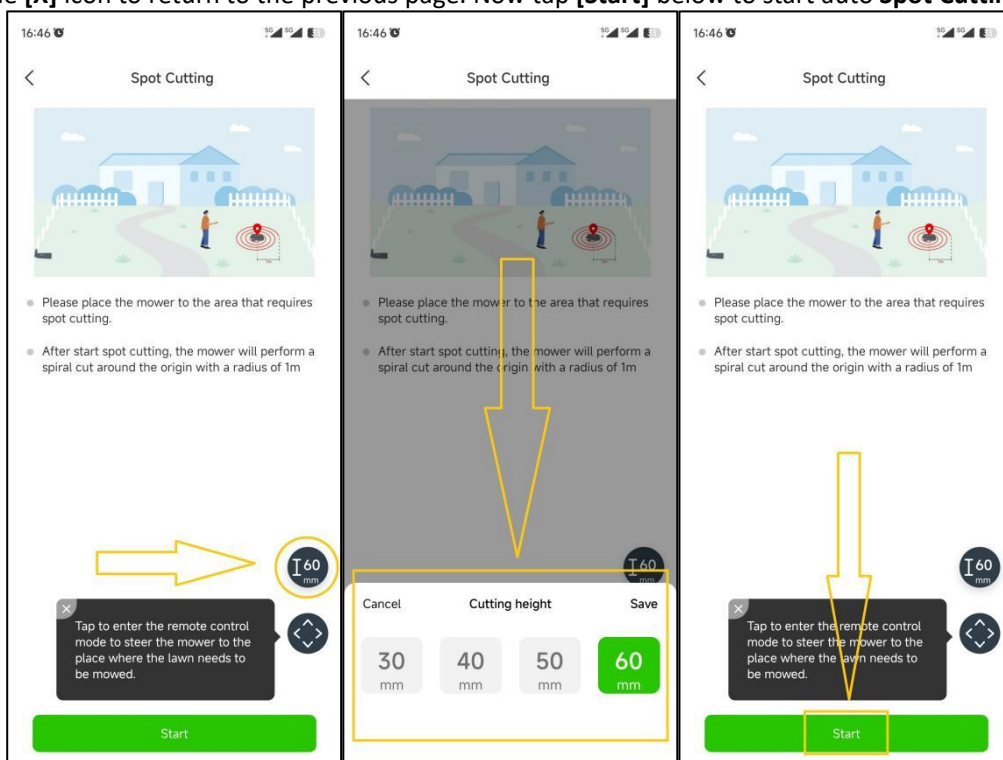
- 1) Open the RoboUP® APP and tap the mower. On the map page, tap the **[More Functions]** icon in the top right corner to enter the **[More Functions]** page.



- 2) Click **[Spot Cutting]** to enter the **[Spot Cutting]** page. Tap the button in the lower right corner to enter **[Remote control mode]**. Work the thumb sliders and steer the mower to the wanted destination. Click the **[X]** icon on the upper right corner to return to the page.



3) To modify the cutting height, click the **[height]** icon on the left. Select the preferred height and click **[Save]** and click the **[X]** icon to return to the previous page. Now tap **[Start]** below to start auto **Spot Cutting**.



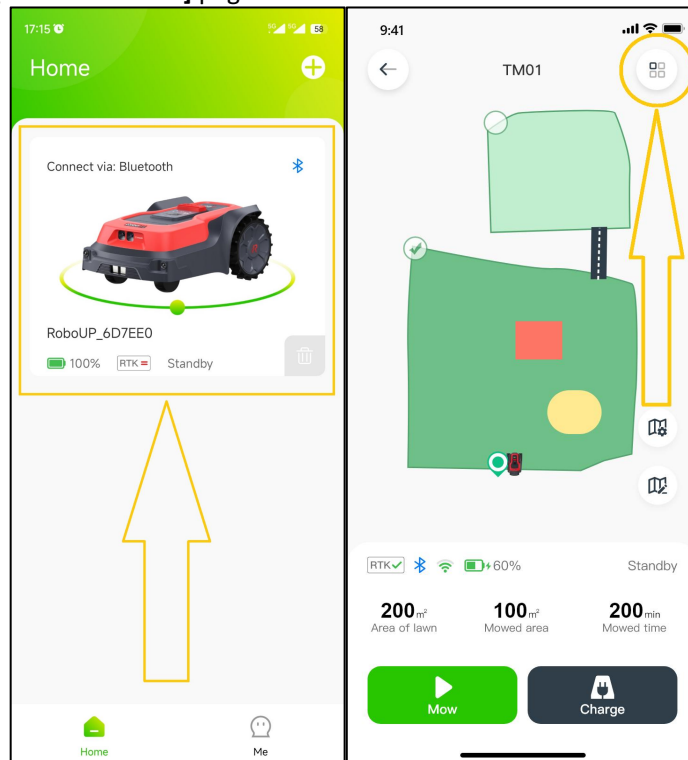
Note: On the [Spot cutting] page, you can choose square spot cutting(2m*2m).



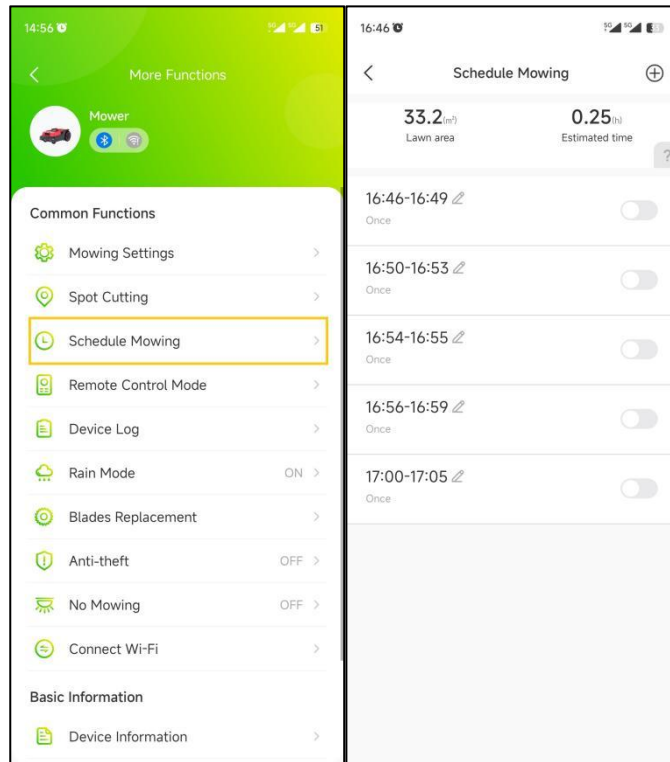
8.3 Schedule Mowing

Note: Use the APP in Bluetooth or Wi-Fi connection mode to set up Schedule Mowing.

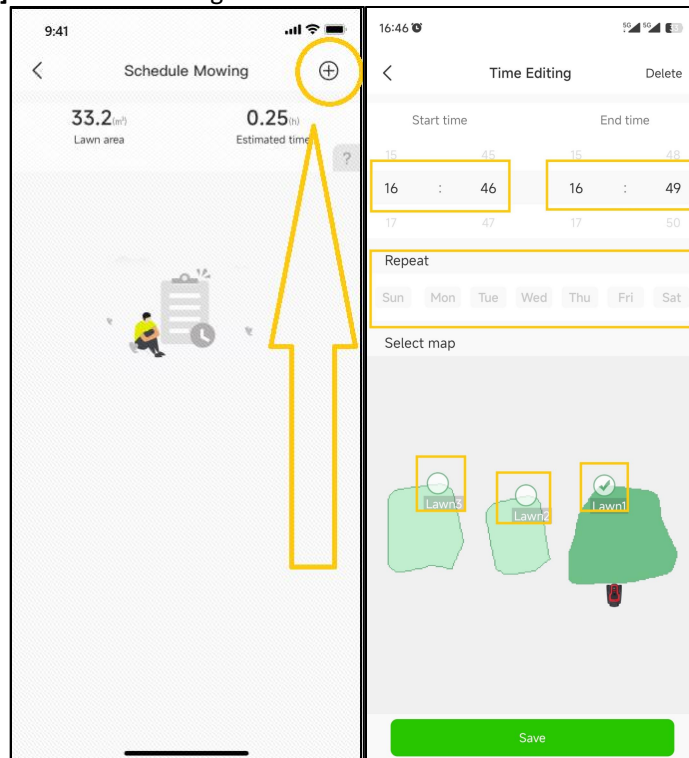
- 1) Open the RoboUP® APP and tap the mower. On the map page, tap the [More Functions] icon on the top right corner to enter the [More Functions] page.




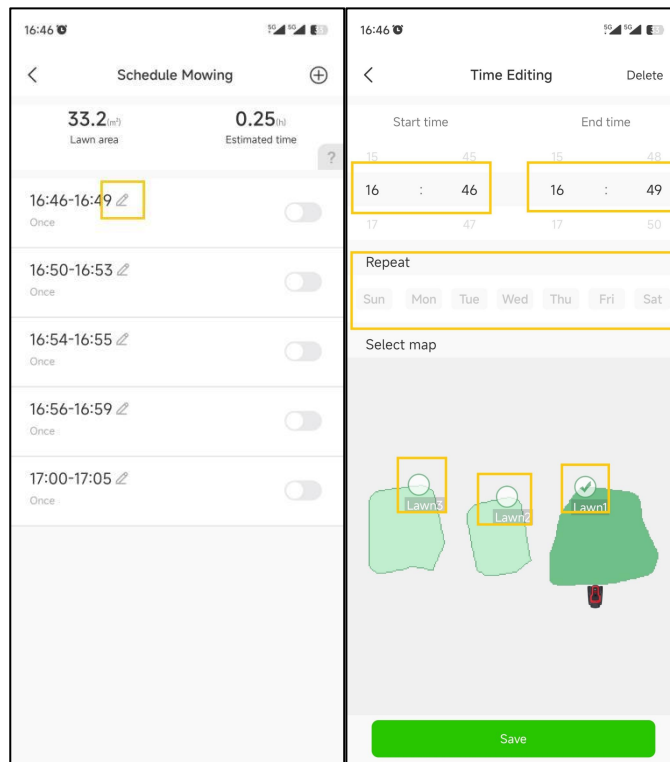
- 2) Tap [Schedule Mowing] to enter the [Schedule Mowing] page. There you find the lawn area and estimated mowing time. Refer to the corresponding steps to add, edit, enable, disable or delete the mowing schedule.



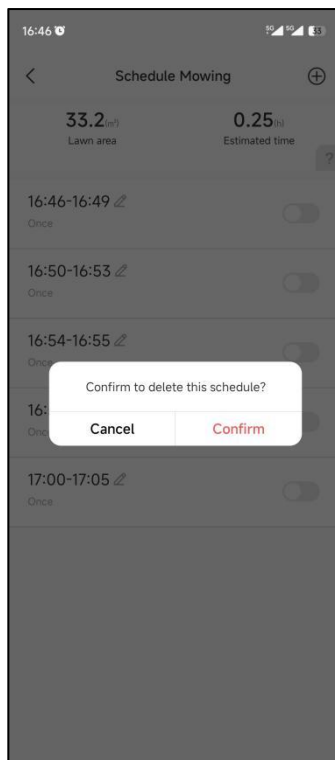
- 3) **Add a new mowing schedule:** Tap **[+]** on the top right corner, set **start time** and **end time** for the mower to mow the lawn. Select the **working day** under **[Repeat]** and select the zones to customize the mowing schedules. After that, tap **[Save]** to save the settings.



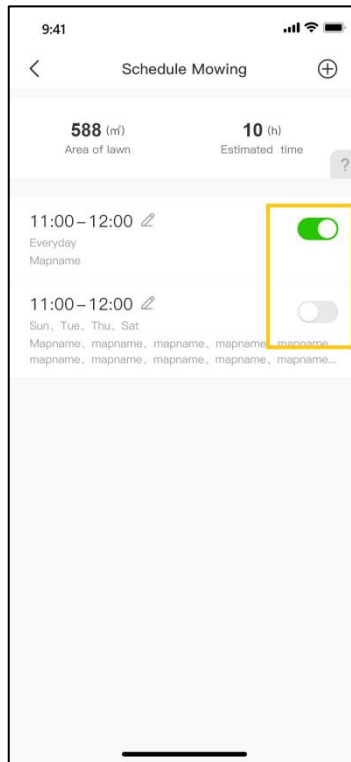
- 4) **Edit the existing mowing schedule:** In order to modify details of the schedule, click the  icon and start editing. Once finished tap **[Save]** to save the new settings. You can also delete a schedule.



- 5) **Delete the existing mowing schedule:** In order to delete an existing schedule, long press the schedule, then tap **[Confirm]** to delete it.



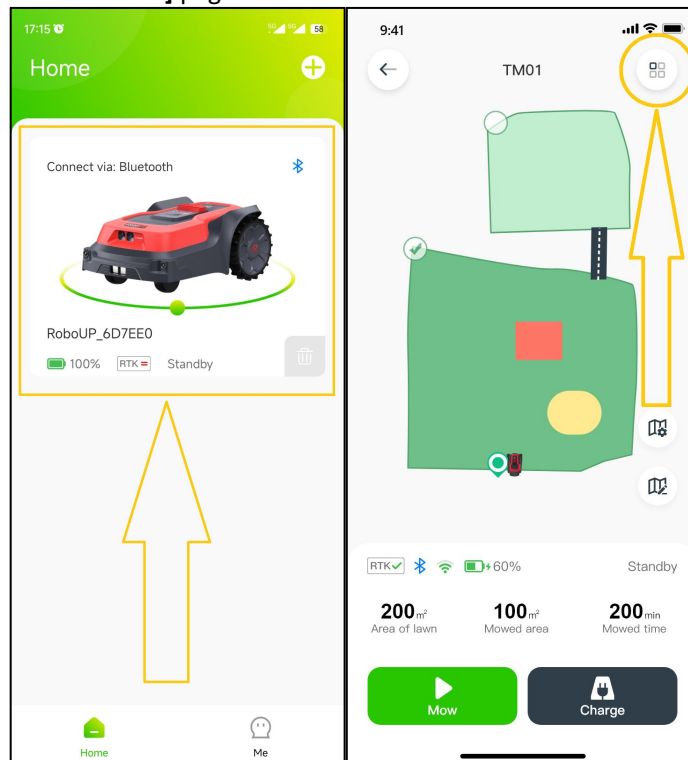
- 6) **Disable or enable the existing mowing schedule:** In order to keep a mowing schedule but put it in sleep mode, just tap the slider button to disable it. Tap the slider button again to re-enable the schedule.



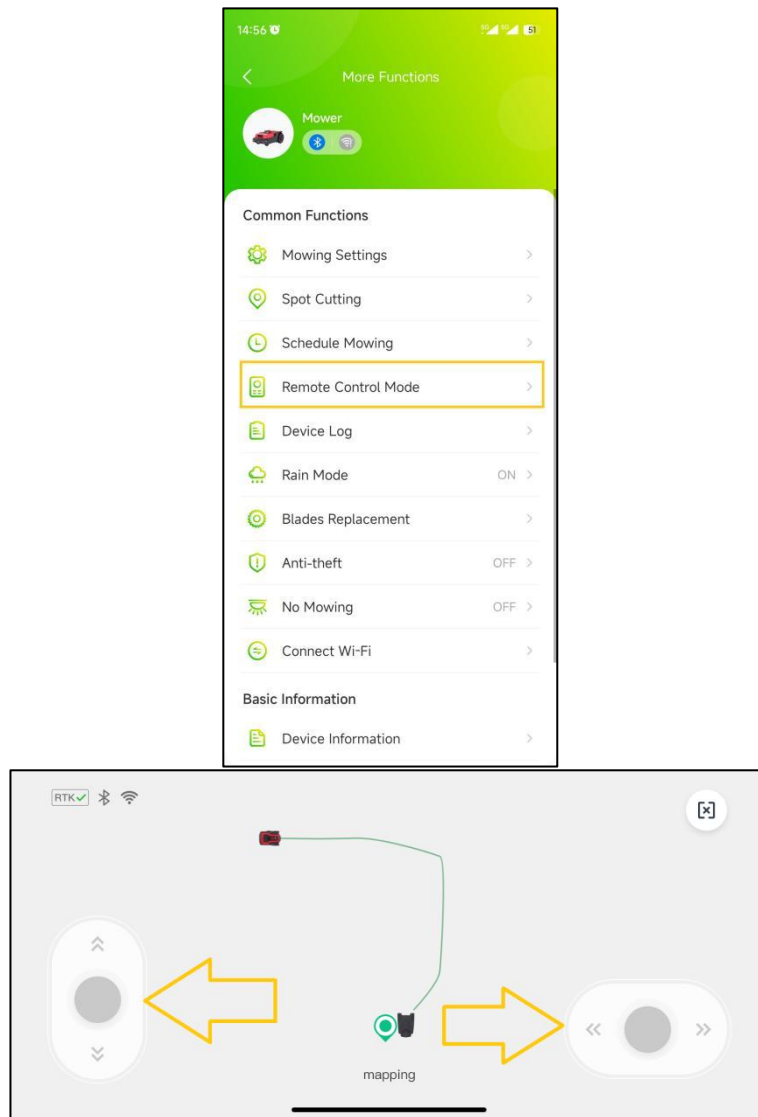
8.4 Remote Control Mode

In order to move the mower to a peculiar spot, the **[Remote Control Mode]** function will be helpful:

- 1) Open the RoboUP® APP and tap the mower. On the map page, tap the **[More Functions]** bicon on the top right corner to enter the **[More Functions]** page.

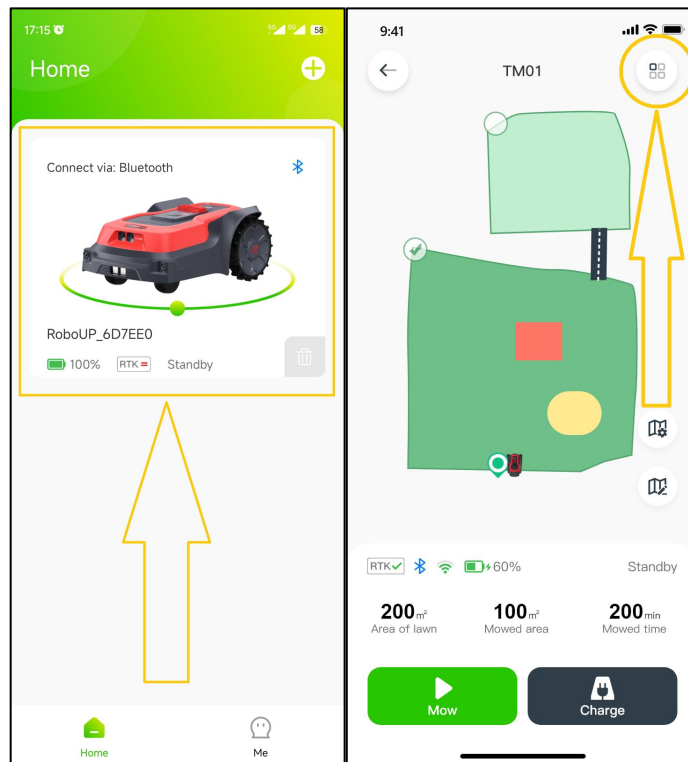


- 2) Click **[Remote Control Mode]** to enter the next page. Use the thumb sliders “up/down – left/right” and steer the mower as needed.

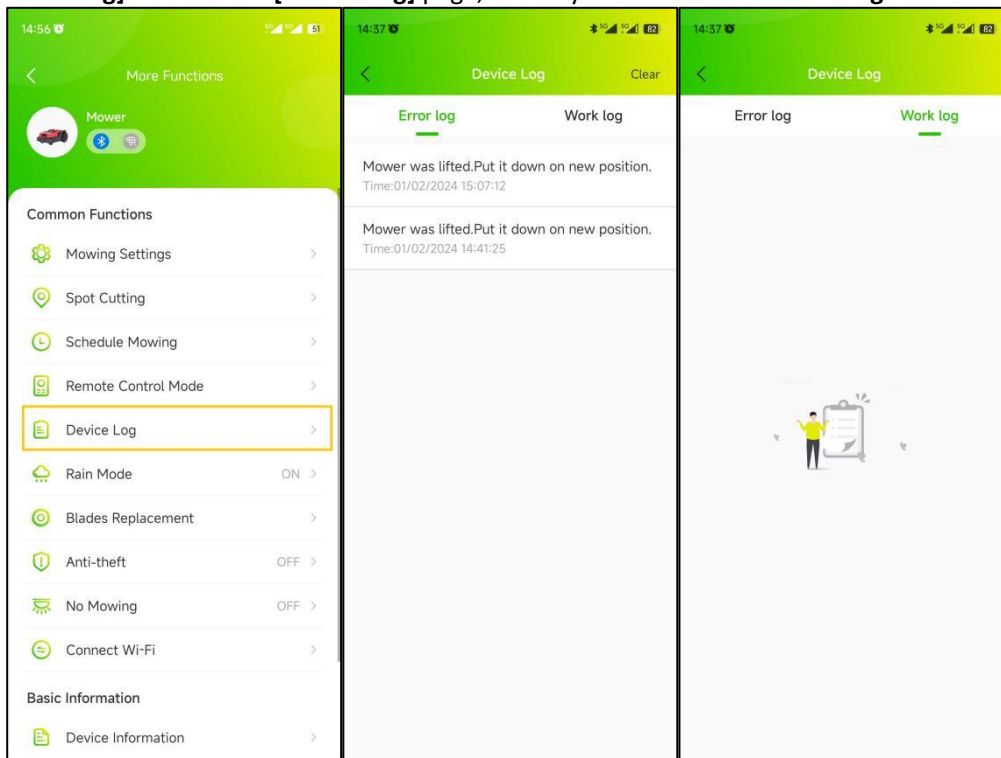


8.5 Device Log

- 1) Open the RoboUP® APP and tap the mower. On the map page, tap the **[More Functions]** icon on the top right corner to enter the **[More Functions]** page.



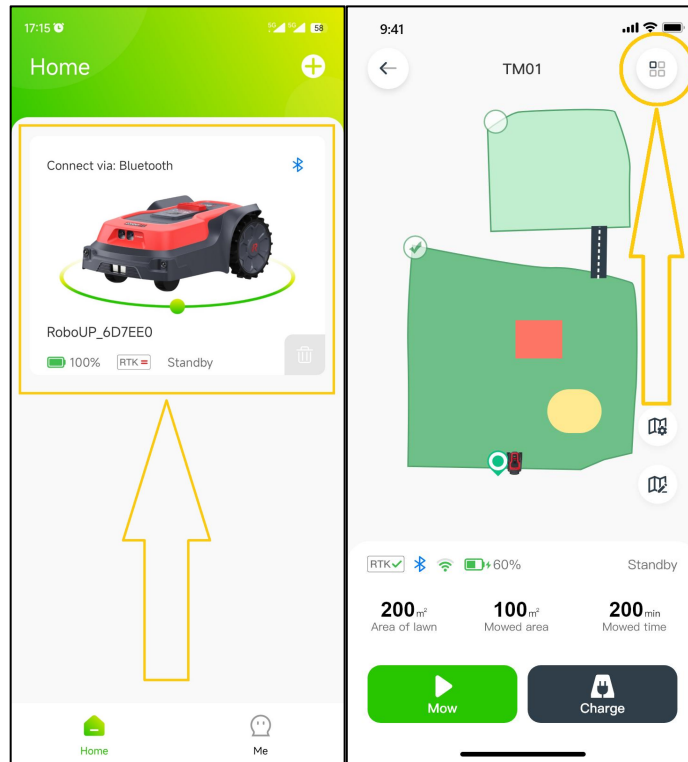
2) Click **[Device Log]** to enter the **[Device Log]** page, where you can check the **Error Log** and **Work Log**.



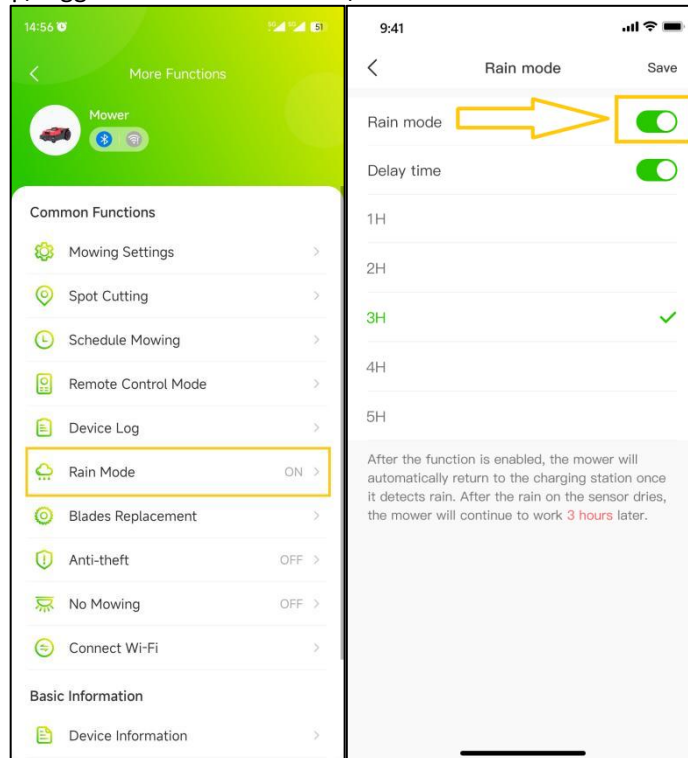
8.6 Rain Mode

Note: If you don't want the mower to work on rainy days to avoid damaging the grass, you can turn on rain mode. When the mower detects rain now it will go back to the charging station. Mowing will be resumed once the rain has stopped, mower's rain sensor has dried, and the delay time has run out.

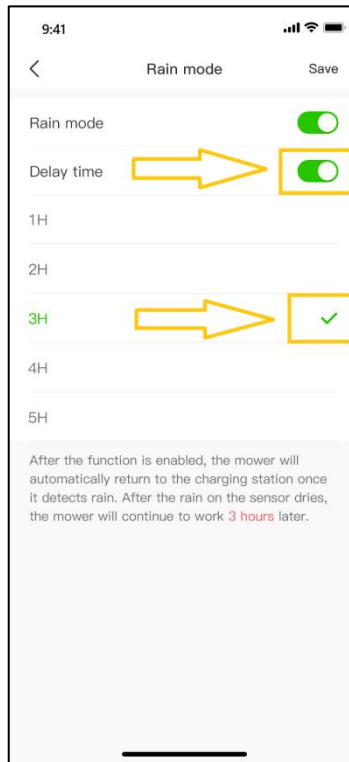
1) Open the RoboUP® APP and tap the mower. On the map page, tap the **[More Functions]** icon on the top right corner to enter the **[More Functions]** page.



2) Click **[Rain Mode]**. Tap/toggle the button to enable/disable **Rain Mode**.



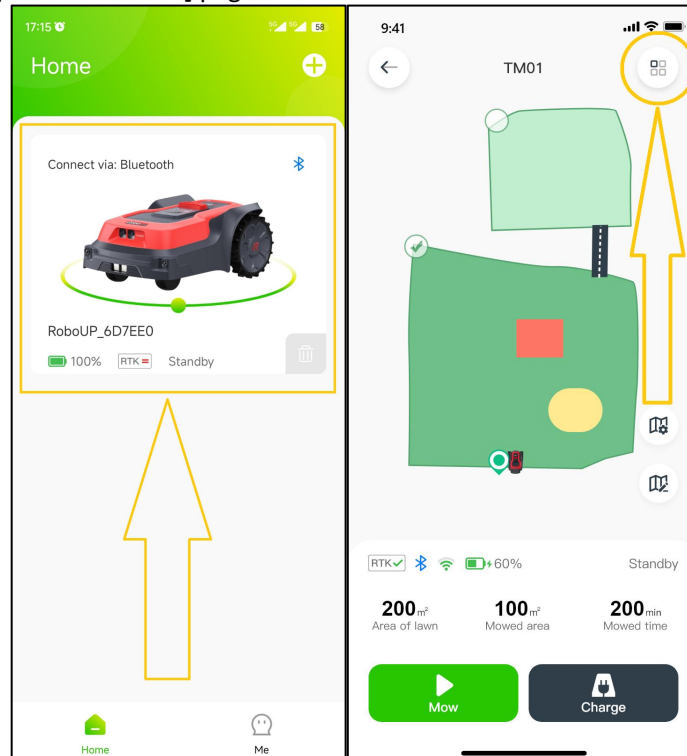
3) Click **[Delay time]** to enable it and select the amount of time the mower will wait after rain has stopped (sensor has dried), grass has dried up and RoboUP® will resume mowing.



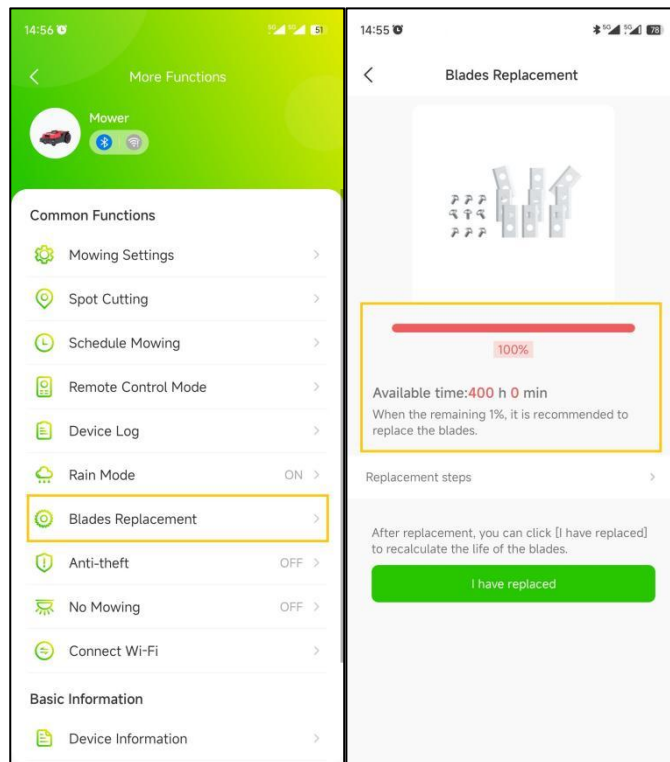
8.7 Blades Replacement

Note: When a new set of blades has been used for about 200 hours, refer to the [Replacing steps] to use another screw holes.

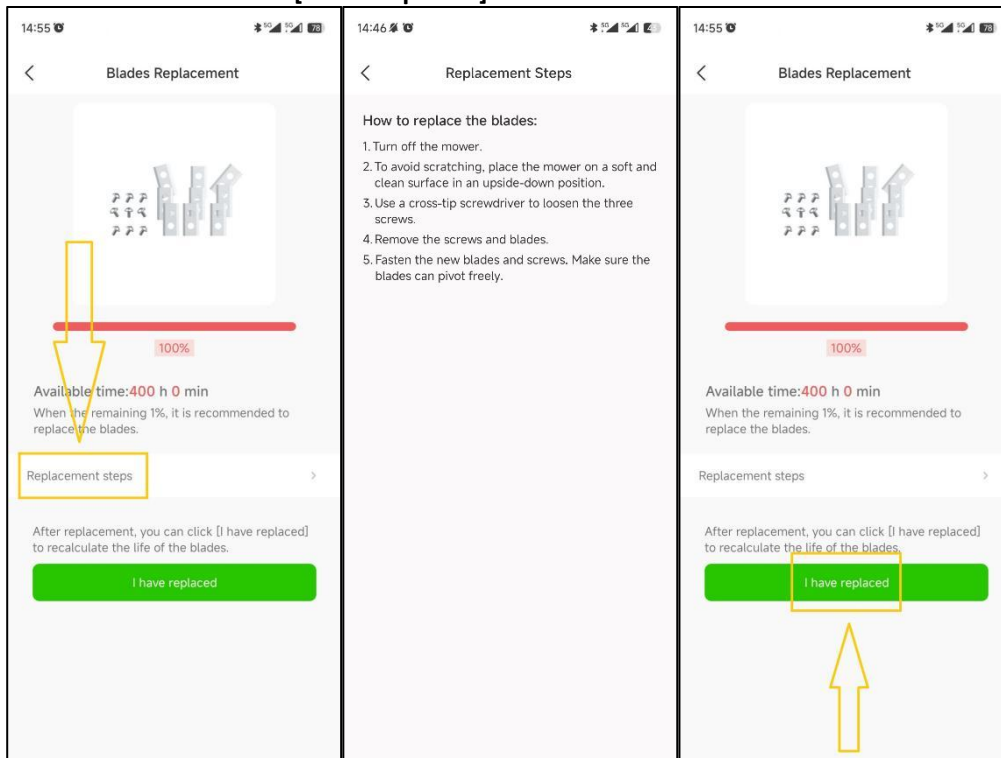
- 1) Open the RoboUP® APP and tap the mower. On the map page, tap the [More Functions] icon on the top right corner to enter the [More Functions] page.



- 2) Click [Blades Replacement] to enter the next page, where you see the remaining life time before replacement is needed.



- 3) The blades have 2 mounting holes. After app. 200hrs you maybe want to turn the blades by 180 degrees for more efficiency. For more details click the **[Replacement Steps]** for reference. If you prefer to install a new set of blades click the button below **[I have replaced]** and the time will reset.

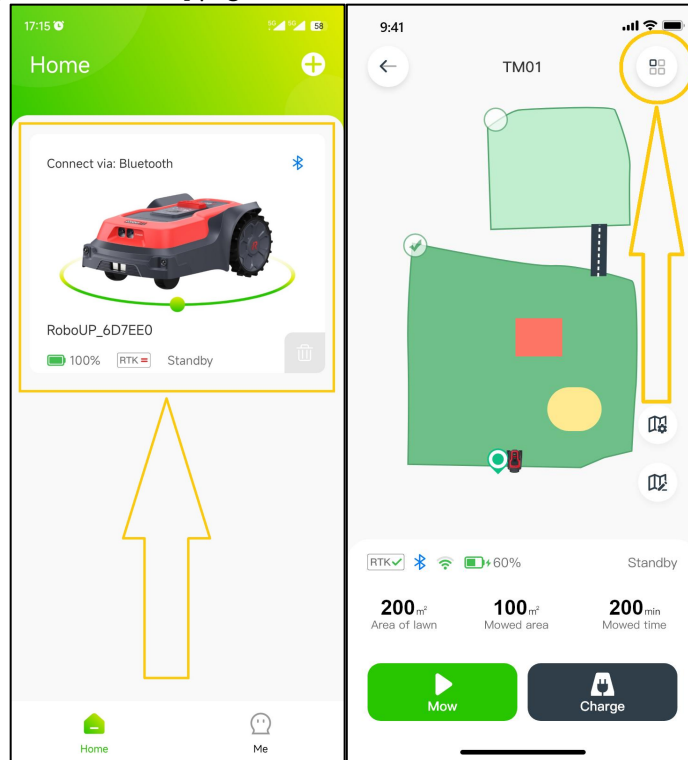


8.8 Anti-theft

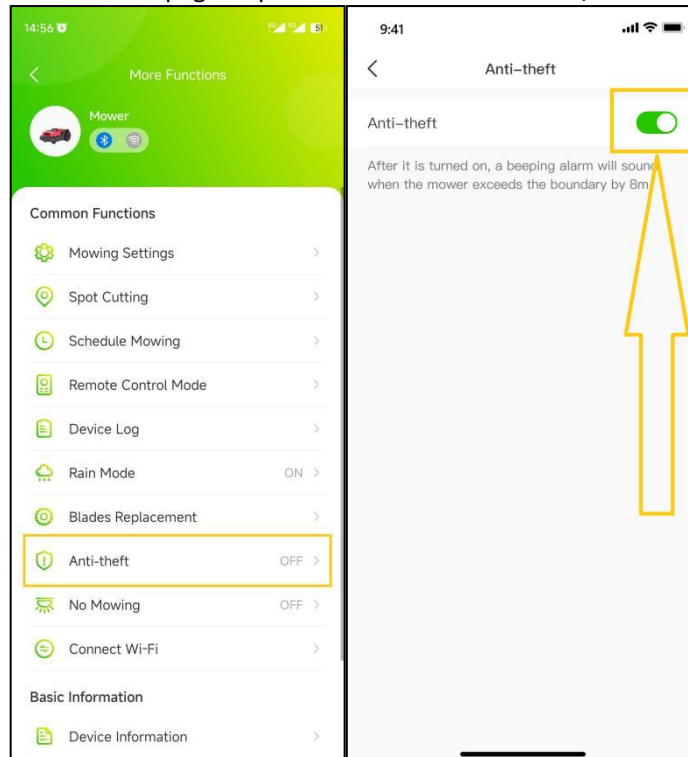
The mower will be auto-locked when it is moved outside of the mapped area. For re-activated the mower enter the correct PIN code. To keep the mower safe, it is recommended to enable the **[Anti-theft]** mode.

- 1) Open the RoboUP® APP and tap the mower. On the map page, tap the **[More Functions]** icon on the top right

corner to enter the **[More Functions]** page.



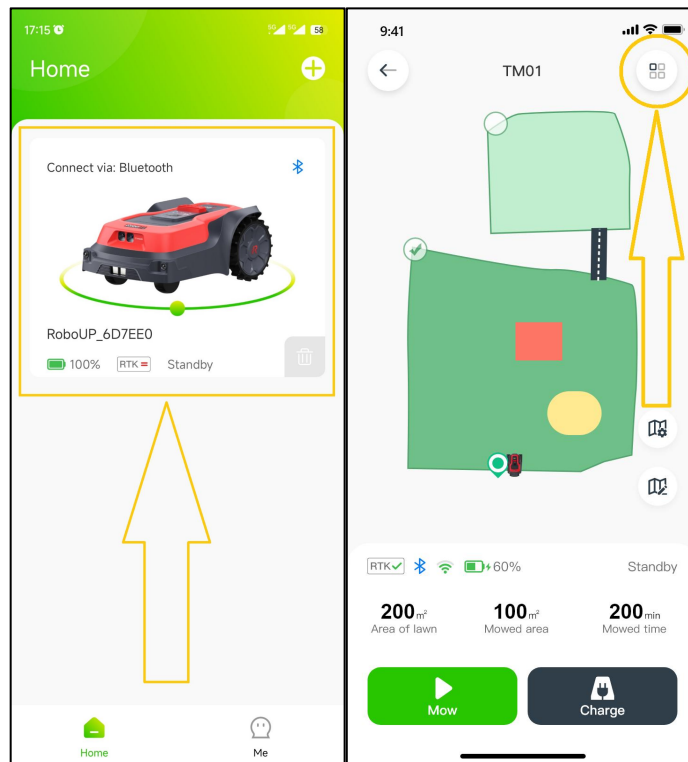
2) Click **[Anti-theft]** to enter the next page. Tap the slider button to enable/disable the mode.



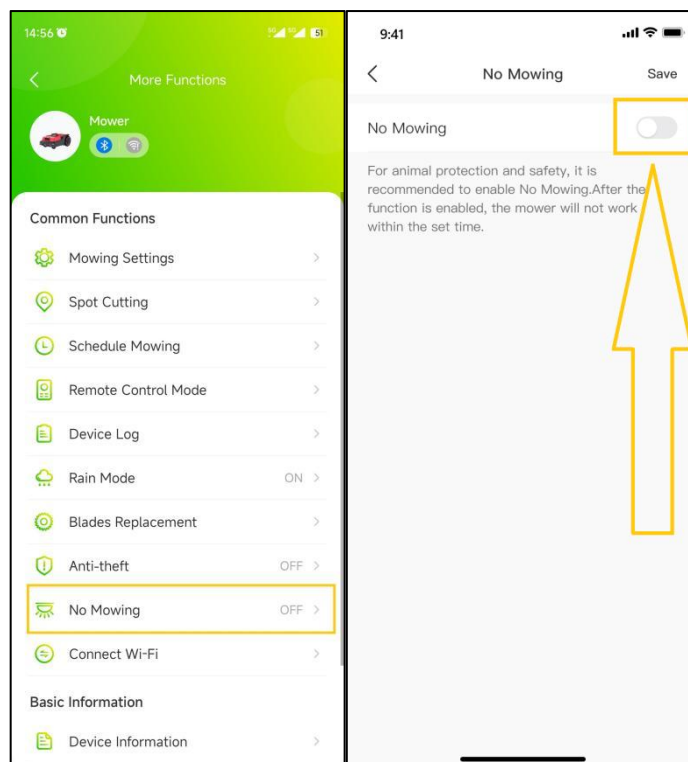
8.9 No Mowing

To prevent mowing at specific times, night mode can be selected according to the steps below:

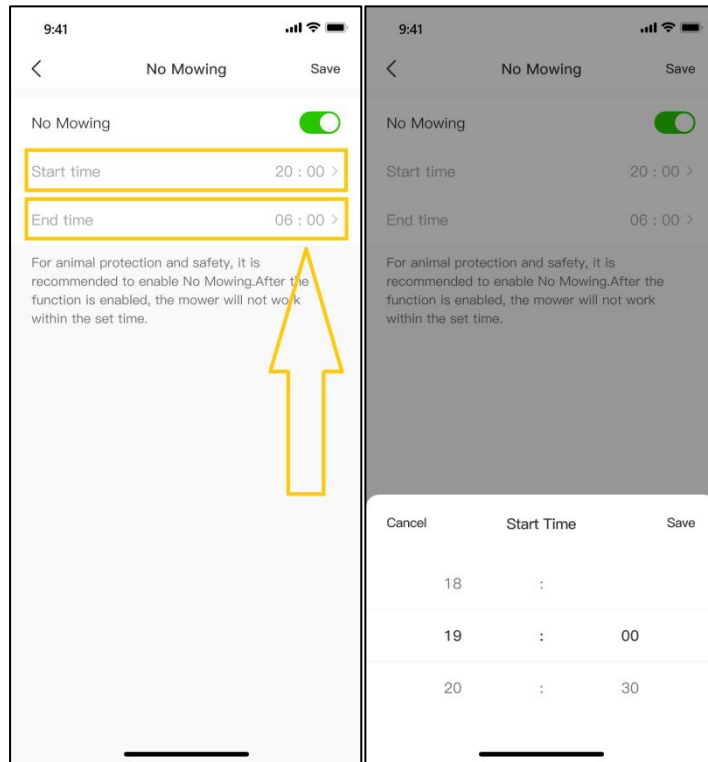
- 1) Open the RoboUP® APP and tap the mower. On the map page, tap the **[More Functions]** icon on the top right corner to enter the **[More Functions]** page.



2) Click **[No Mowing]** to enter the next page, then tap the slider button to enable/disable **No Mowing Mode**.



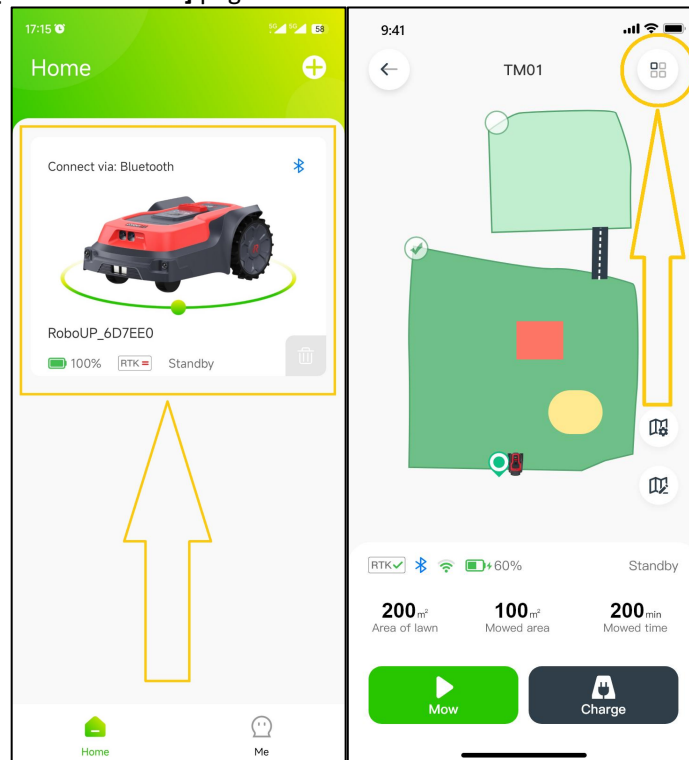
3) After enabling, set the start time and end time for the mower to stop and resume mowing.



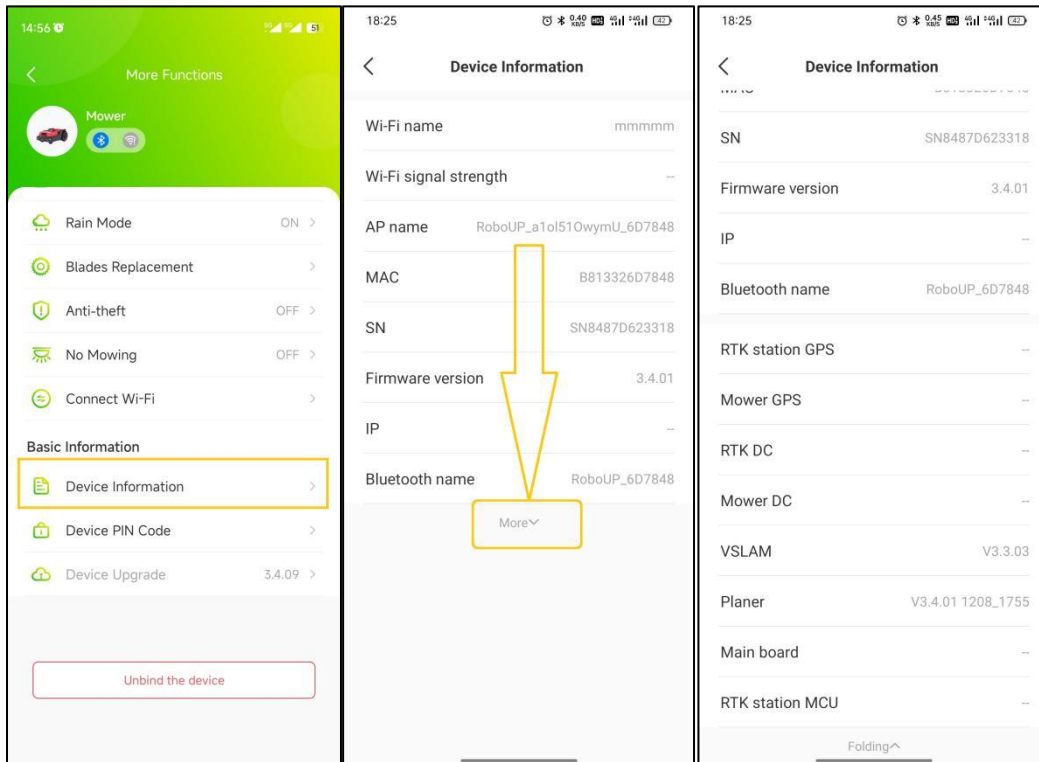
8.10 Device Information

In order to check out the mower's basic device information (MAC address, Serial Number, firmware version, etc) in the RoboUP® APP following steps will help:

- 1) Open the RoboUP® APP and tap the mower. On the map page, tap the **[More Functions]** icon on the top right corner to enter the **[More Functions]** page.

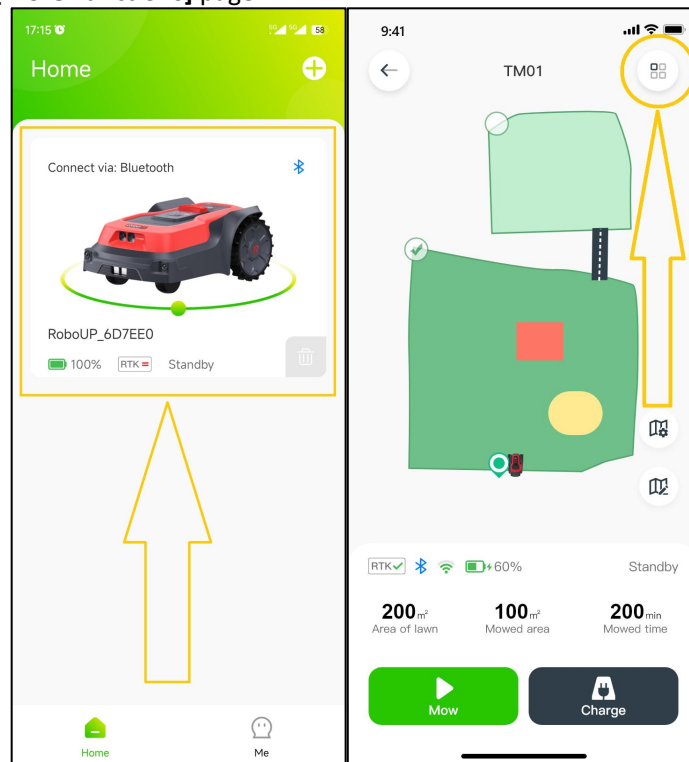


- 2) Tap **[Device Information]**. The map page now shows basic device information. Click **[More]** for additional information.

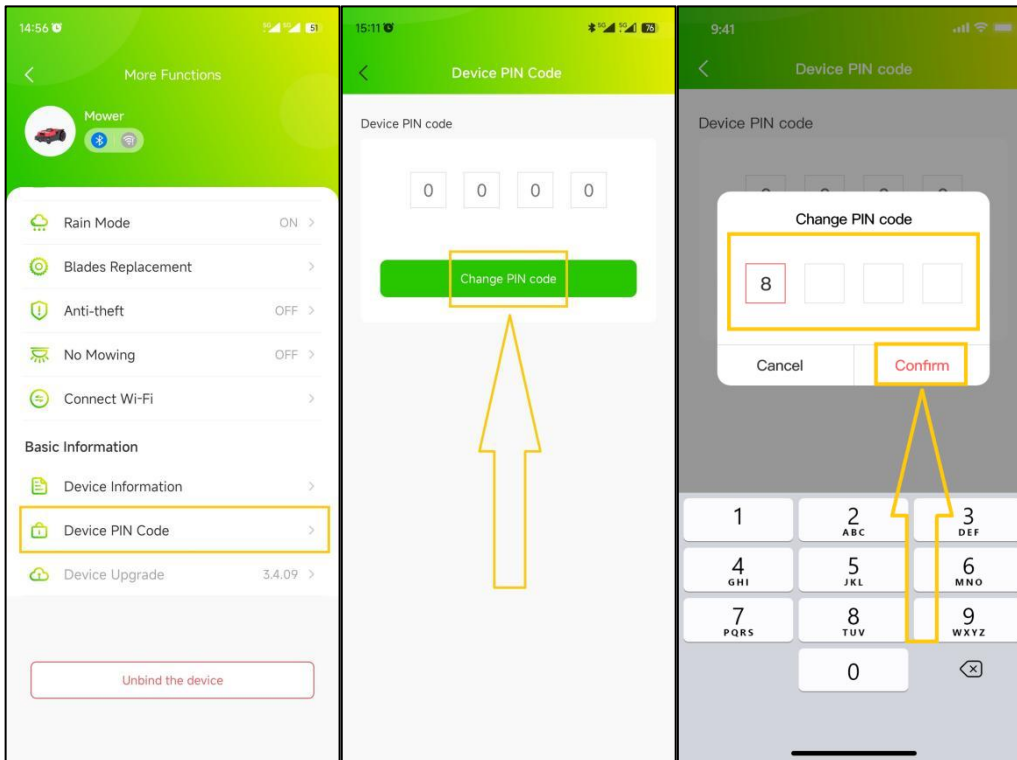


8.11 Device PIN Code

- 1) Open the RoboUP® APP and tap the mower. On the map page, tap the **[More Functions]** icon on the top right corner to enter the **[More Functions]** page.



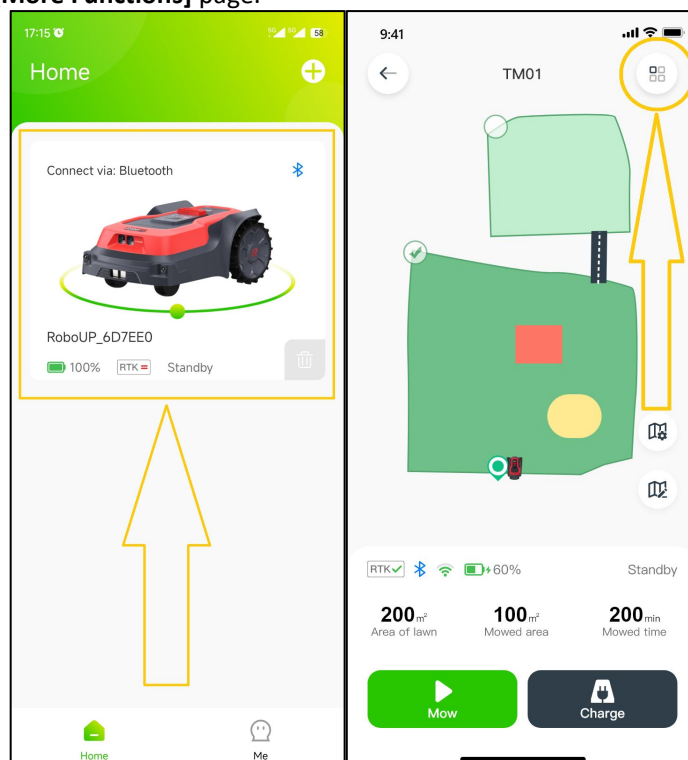
- 2) Click **[Device PIN Code]** to enter the page. Tap the **[Change PIN Code]** button, enter the new PIN code and click **[Confirm]** to save it.



8.12 Device Upgrade

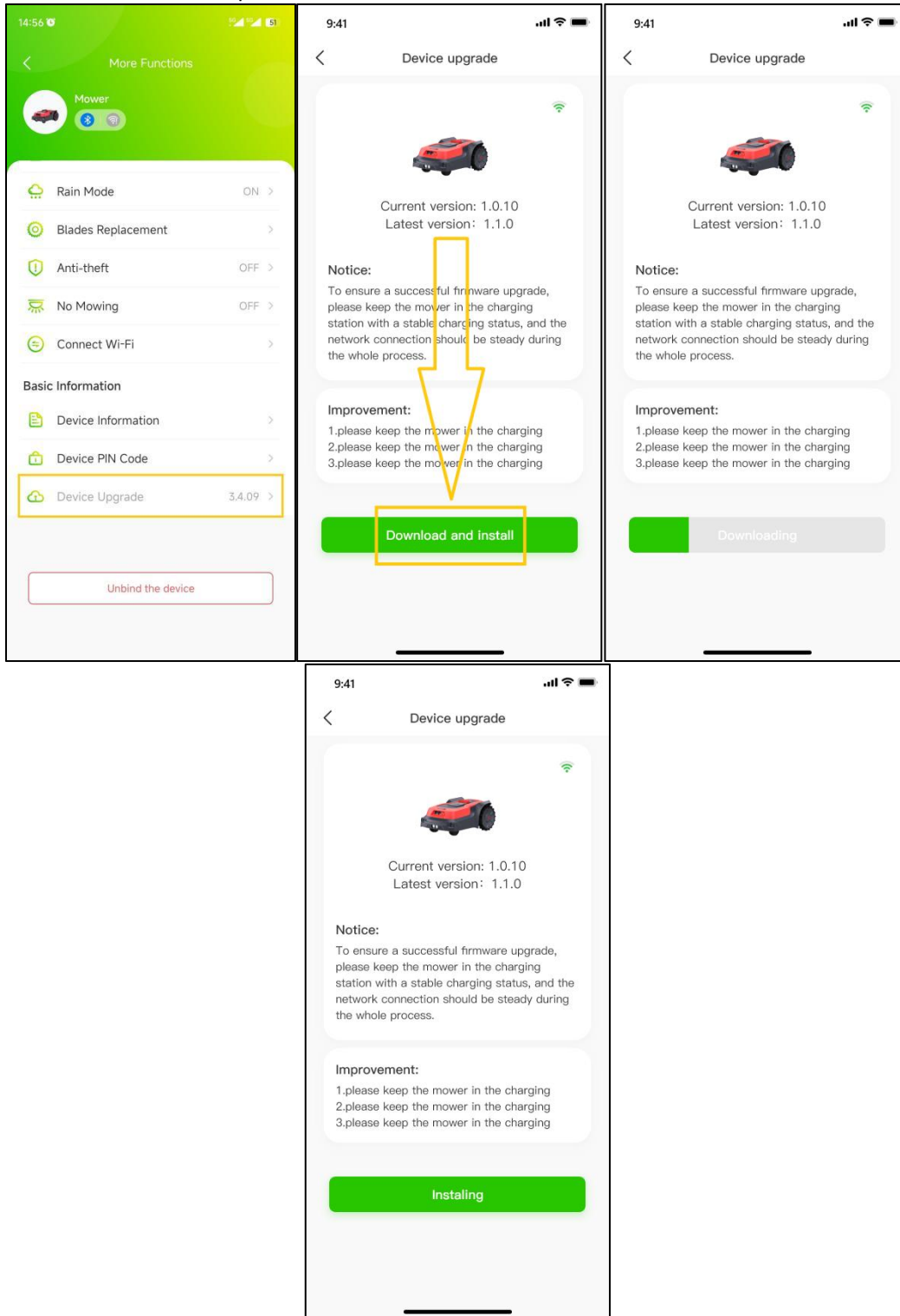
Note: Before upgrading the mower firmware, refer to chapter “5: Wi-Fi Connection”, explaining how to access the Internet using your Wi-Fi home network. Internet availability can be checked on the mowers LCD UI (look for Wi-Fi icon). The mower must have good/strong Wi-Fi signal reception for a smooth firmware upgrade.

- 1) Open the RoboUP® APP and tap the mower. On the map page, tap the **[More Functions]** icon on the top right corner to enter the **[More Functions]** page.

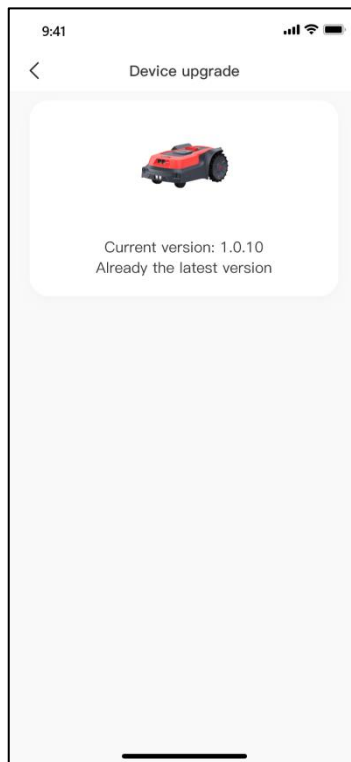


- 2) Tap **[Device Upgrade]** option. On the next page click **[Download and install]** and confirm to enter the

automatic firmware upgrade process. The upgrade process will be finished within app. 15 minutes depending on FW file size and network speed.



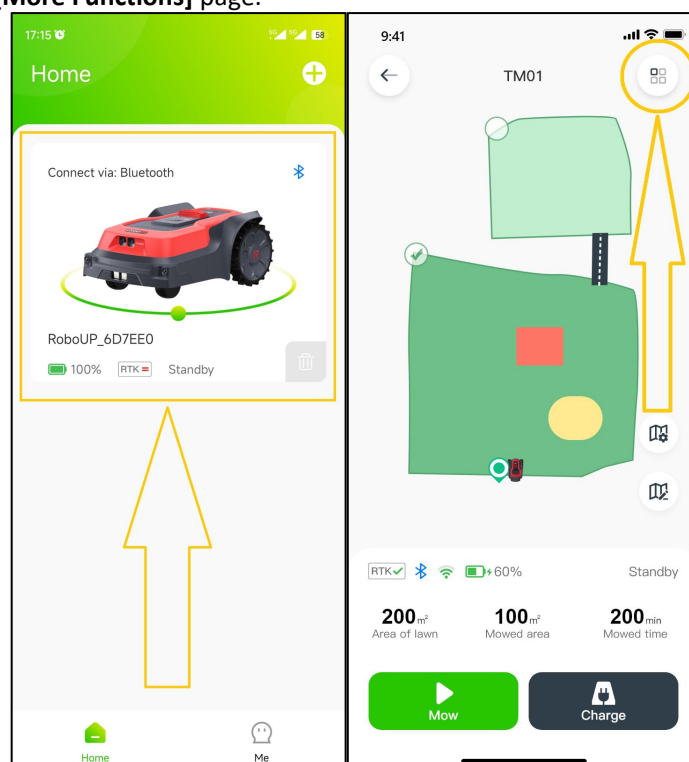
- 3) Once the firmware upgrade is finished check on the **[Device Upgrade]** page if the current version is the latest one.



8.13 Factory Reset

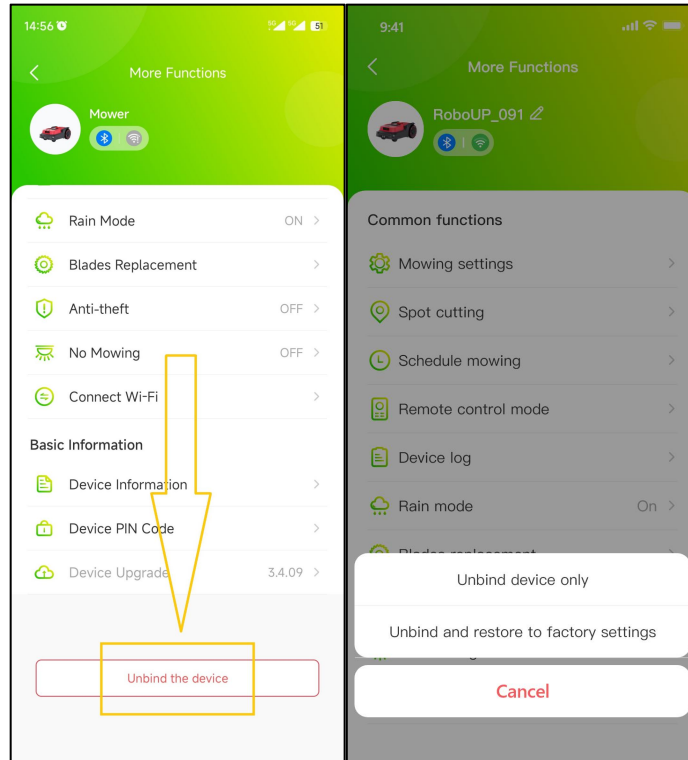
Note: Note: Before restoring the mower's factory settings , refer to chapter "5: Wi-Fi Connection" explaining how to access the Internet using your Wi-Fi home network. Internet availability can be checked on the mowers LCD UI (look for Wi-Fi icon). The mower must have good/strong Wi-Fi signal reception for a smooth factory reset operation.

- 1) Open the RoboUP® APP and tap the mower. On the map page, tap the **[More Functions]** icon on the top right corner to enter the **[More Functions]** page.

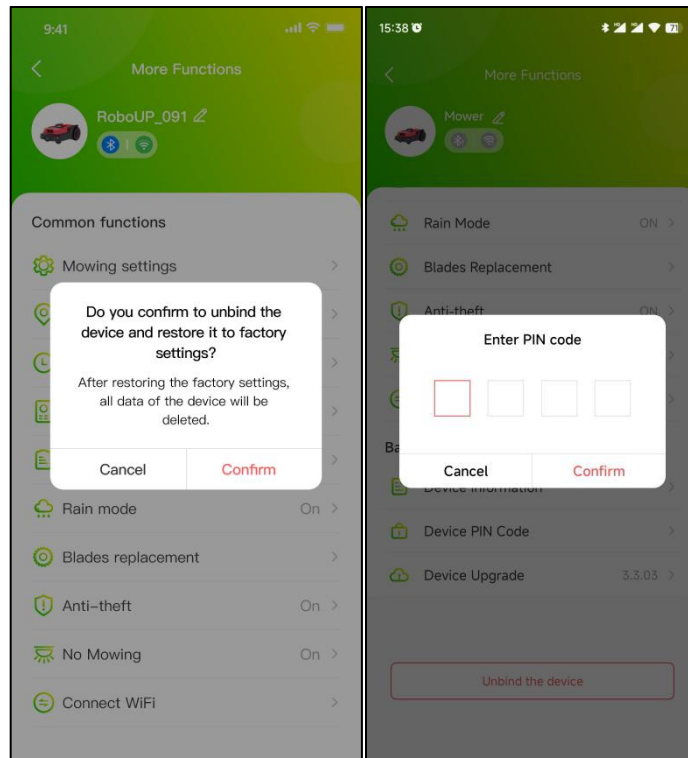


- 2) On the page bottom click [Unbind the device] and in the pop-up window select [Unbind and restore to factory

settings].



- 3) On the pop-up prompt, tap **[Confirm]** to go next and **Enter PIN code** to restore factory settings once you tap **[Confirm]** again.

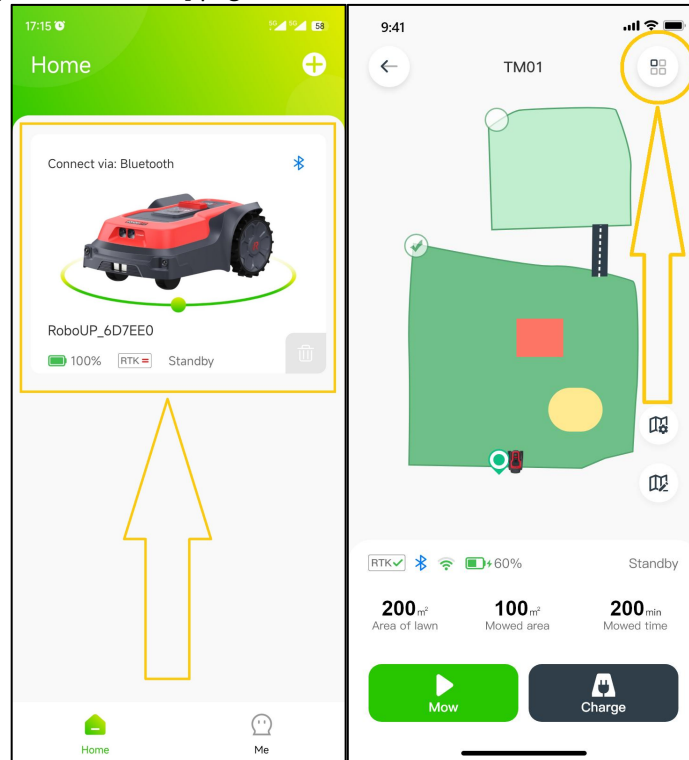


9 Account

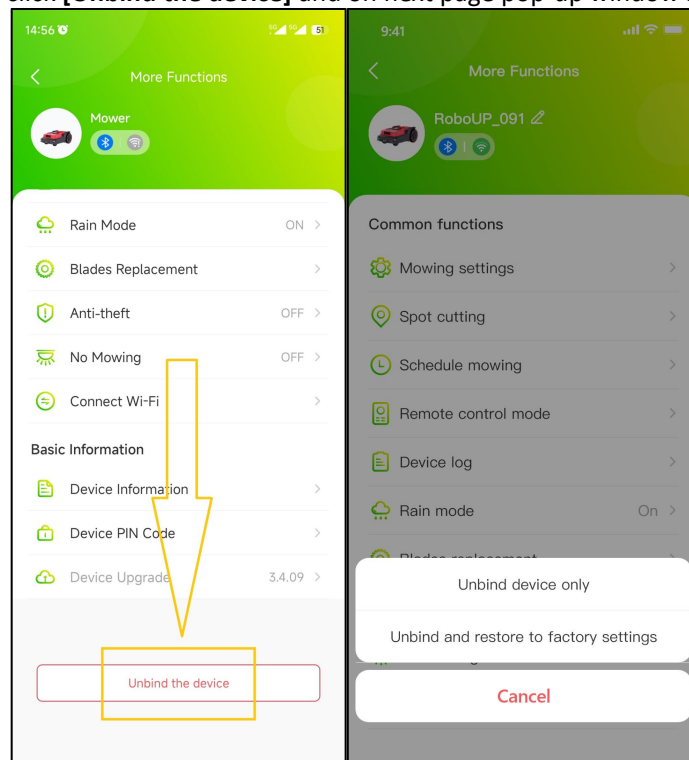
9.1 Unbinding Mower

Note: As long as you have a mower in your account that has been bound via Wi-Fi, you can unbind it regardless of whether the mower is online at the time.

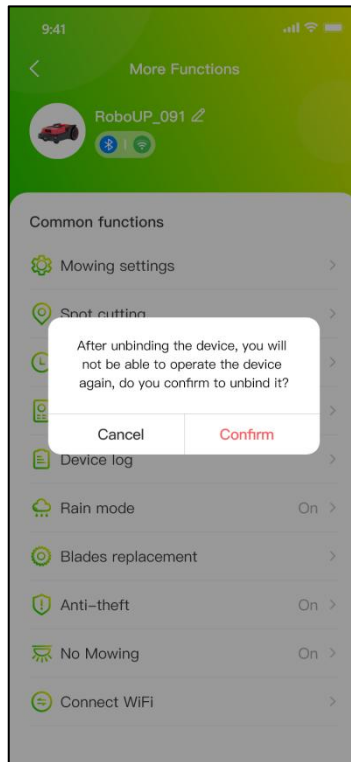
- 1) Open the RoboUP® APP and tap the mower. On the map page, tap the **[More Functions]** icon on the top right corner to enter the **[More Functions]** page.



- 2) On the page bottom click **[Unbind the device]** and on next page pop-up window select **[Unbind device only]**.



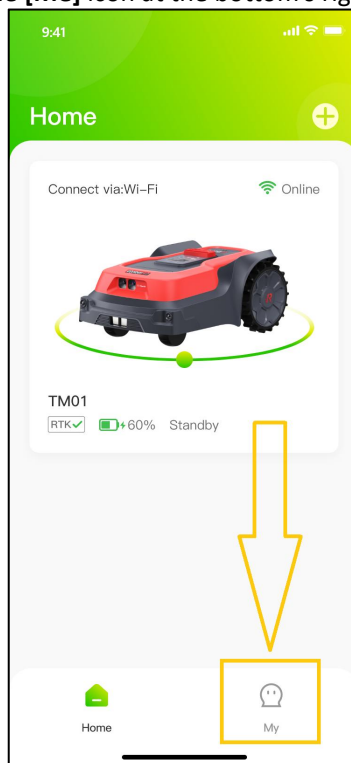
- 3) On the pop-up prompt, read the notes carefully and click **[Confirm]** to unbind the mower from the account.



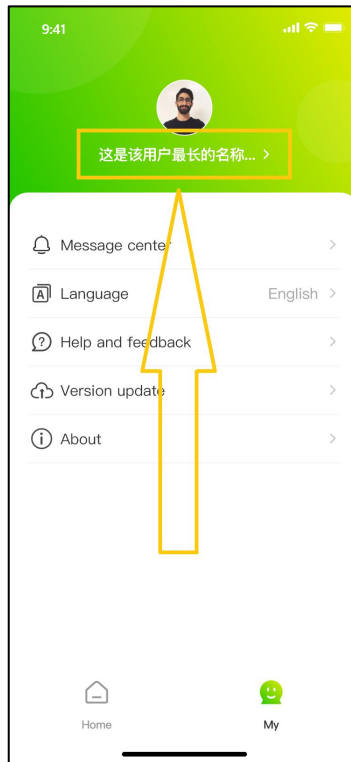
9.2 Unsubscribe

Selecting the wrong country or region could cause a failure to bind the mower. You need to unsubscribe and re-register the account with correct settings.

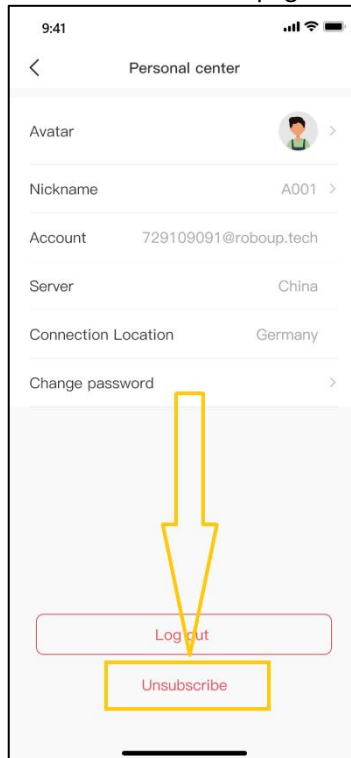
- 1) Open the RoboUP® APP and click the **[Me]** icon at the bottom's right corner to enter the next page.



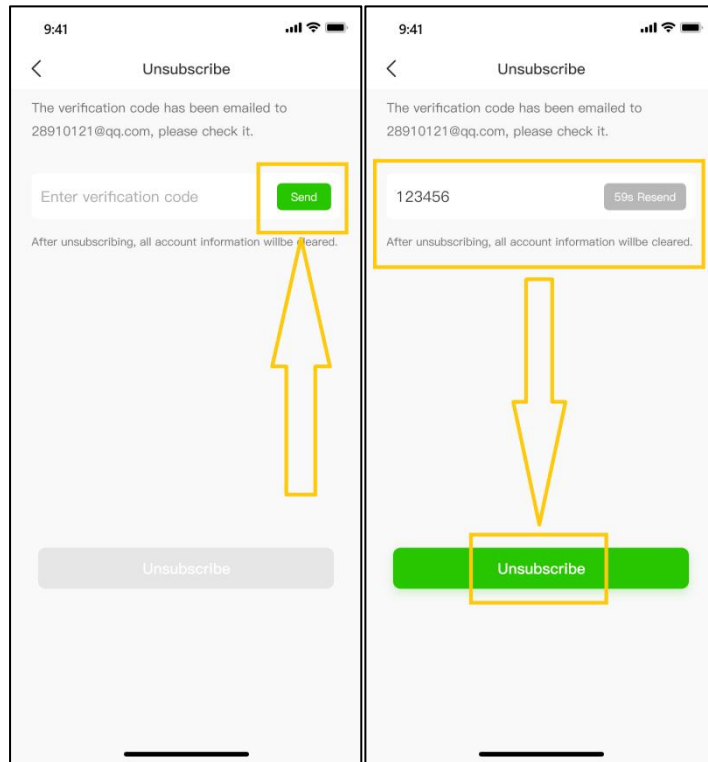
- 2) Click **[Account Name]** below the **Profile Photo** to enter the next page.



3) Click [**Unsubscribe**] on the page bottom to enter the next page.



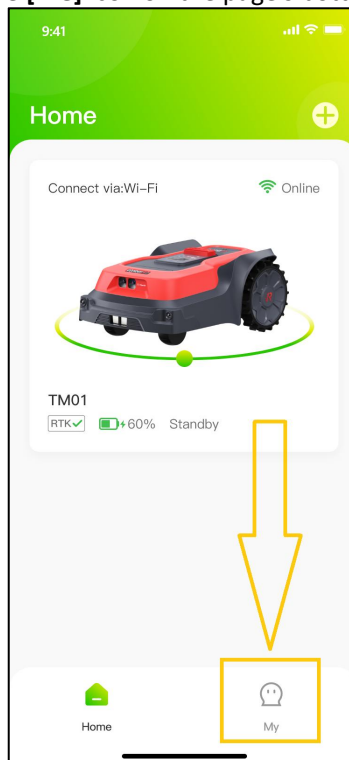
4) In order to get a **Verification Code** click [**Send**]. Wait for a moment before you check your mailbox for an e-mail with the **Verification Code**. Finally enter the **Verification Code** into the APP and click [**Unsubscribe**].



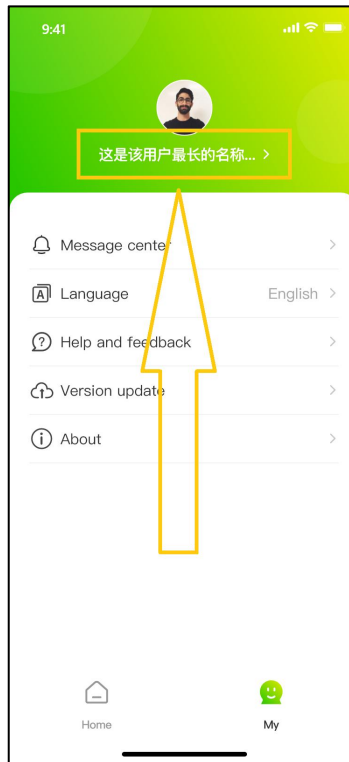
9.3 Log Out

If you did not login to your account for a while you need to re-activate the token. To accomplish that logout first and re-login afterwards:

- 1) Open the RoboUP® APP and click the **[Me]** icon on the page's bottom right corner to enter the next page.



- 2) Click **[Account Name]** underneath the **Profile Photo** to enter the next page.



3) Click **[Log Out]** on the page bottom to log out from the account.

