

RoboUP

Robotic Lawn Mower

>>>>> No Boundary Wire <<<<<

RoboUP®



APP User Guide

Contents

1 APP DOWNLOAD AND INSTALLATION	I
2 ACCOUNT REGISTRATION AND LOGIN	I
2.1 REGISTER	I
2.2 LOGIN	I
2.3 FORGOT PASSWORD	II
3 BASIC INSTALLATION	II
3.1 STEP 1: ADD A ROBOUP® MOWER	II
3.2 STEP 2: INSTALLATION	VI
3.3 STEP 3: CREATE A VIRTUAL MAP	VII
4 MOWING SETTINGS	XI
4.1 SELECTIVE ZONE MOWING	XI
4.2 CUSTOMIZED MOWING PARAMETERS	XII
5 MAP EDITING	XIII
5.1 ADD A BOUNDARY	XIII
5.2 MAP ERASING	XV
5.3 CREATE A NO-GO ZONE	XVI
5.4 CREATE A PASSAGE	XVI
5.5 DANGEROUS BOUNDARY	XVII
5.6 TO-GO ZONE	XVII
5.7 EDIT MAP NAME	XVIII
5.8 DELETE A MAP	XIX
6 MORE FUNCTIONS	XXII
6.1 EDIT MOWER NAME	XXII
6.2 SPOT CUTTING	XXII
6.3 SCHEDULE MOWING	XXIV
6.4 REMOTE CONTROL MODE	XXVI
6.5 DEVICE LOG	XXVI
6.6 RAIN MODE	XXVII
6.7 BLADES REPLACEMENT	XXVII
6.8 ANTI-THEFT	XXVIII
6.9 NO MOWING	XXVIII
6.10 CONNECT WI-FI	XXIX
6.11 DEVICE INFORMATION	XXIX
6.12 DEVICE PIN CODE	XXX
6.13 DEVICE UPGRADE	XXX
6.14 UNBINDING MOWER	XXXI
6.15 FACTORY RESET	XXXI
7 ME	XXXII
7.1 PERSONAL CENTER	XXXII
7.2 MESSAGE CENTER	XXXIII
7.3 LANGUAGE	XXXIII
7.4 HELP AND FEEDBACK	XXXIV
7.5 CONTACT US	XXXIV
7.6 APP VERSION UPDATE	XXXV
7.7 ABOUT	XXXV
7.8 LOG OUT	XXXVI
7.9 UNSUBSCRIBE	XXXVII

1 APP Download and Installation

Scan the following QR code to download the RoboUP® APP installation file and follow the pop-ups to install the APP.

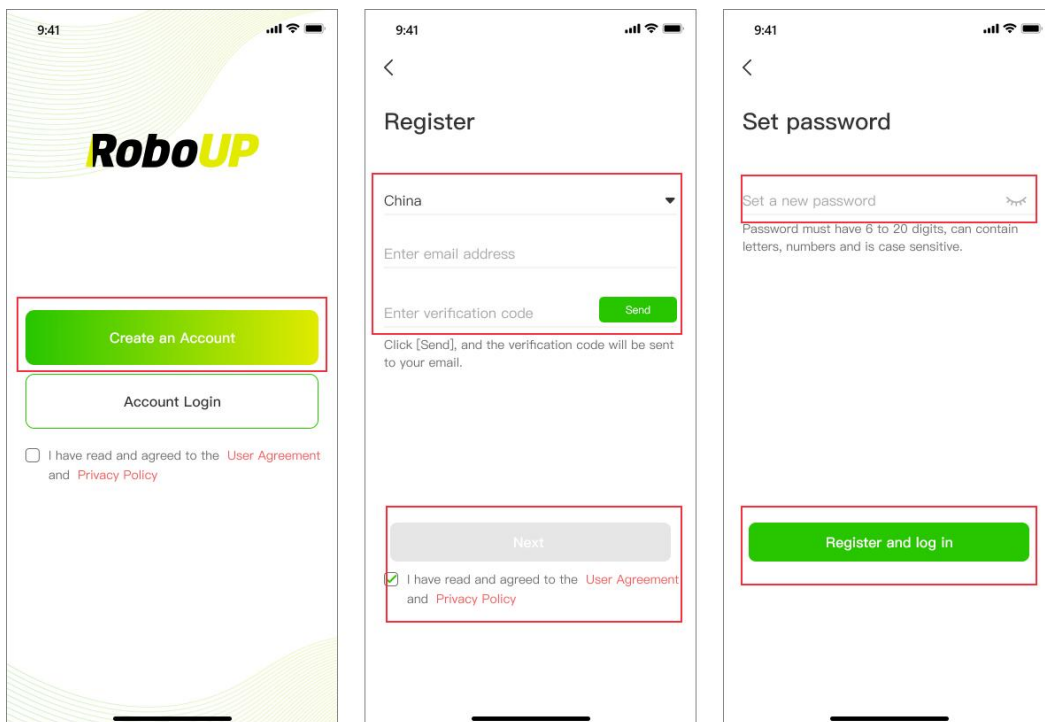


Android/iOS

2 Account Registration and Login

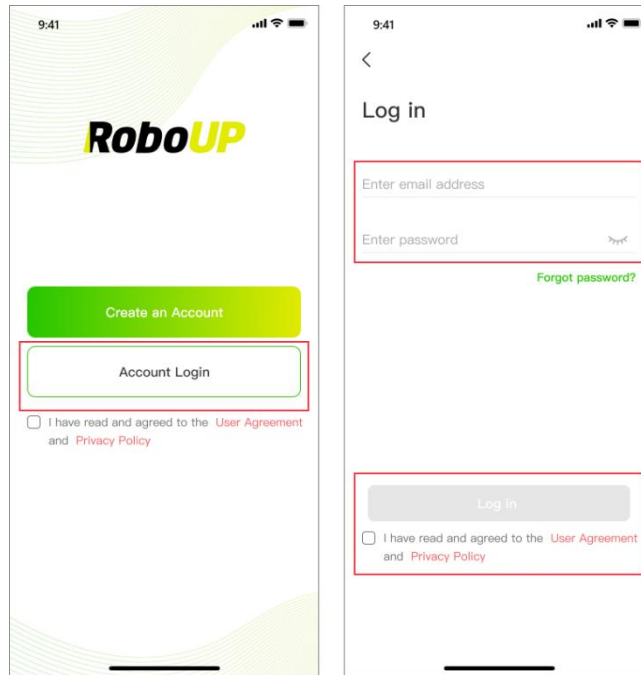
2.1 Register

- 1) Open the RoboUP® APP on your smart phone and click the [Create an Account] button in the top right corner to enter the registration page.
- 2) Select the region or country where you are located and type in a valid e-mail address. Hit [Send] button to request a verification code.
- 3) Check your mailbox for an e-mail with the verification code. Enter the code into the APP and hit [Next].
- 4) Set a login password for your account security and tap the [Register and log in] button to log in.



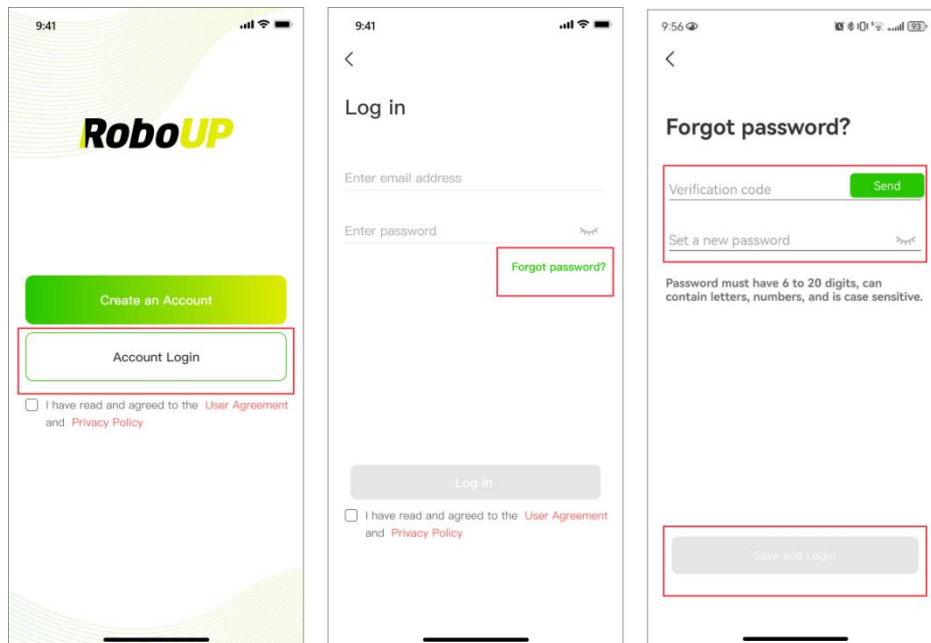
2.2 Login

- 1) Click [Account Login], type in your account name and password and check the [I have read and agreed to the User Agreement and Privacy Policy] (after you have carefully read and agreed to it) and tap [Log in] to log in.



2.3 Forgot password

- 1) If you forget your password, enter your email account and click **[Forgot password?]**
- 2) After getting the verification code via email, enter it in the APP, set a new password, and click **[Save and Login]** to modify it.



3 Basic Installation

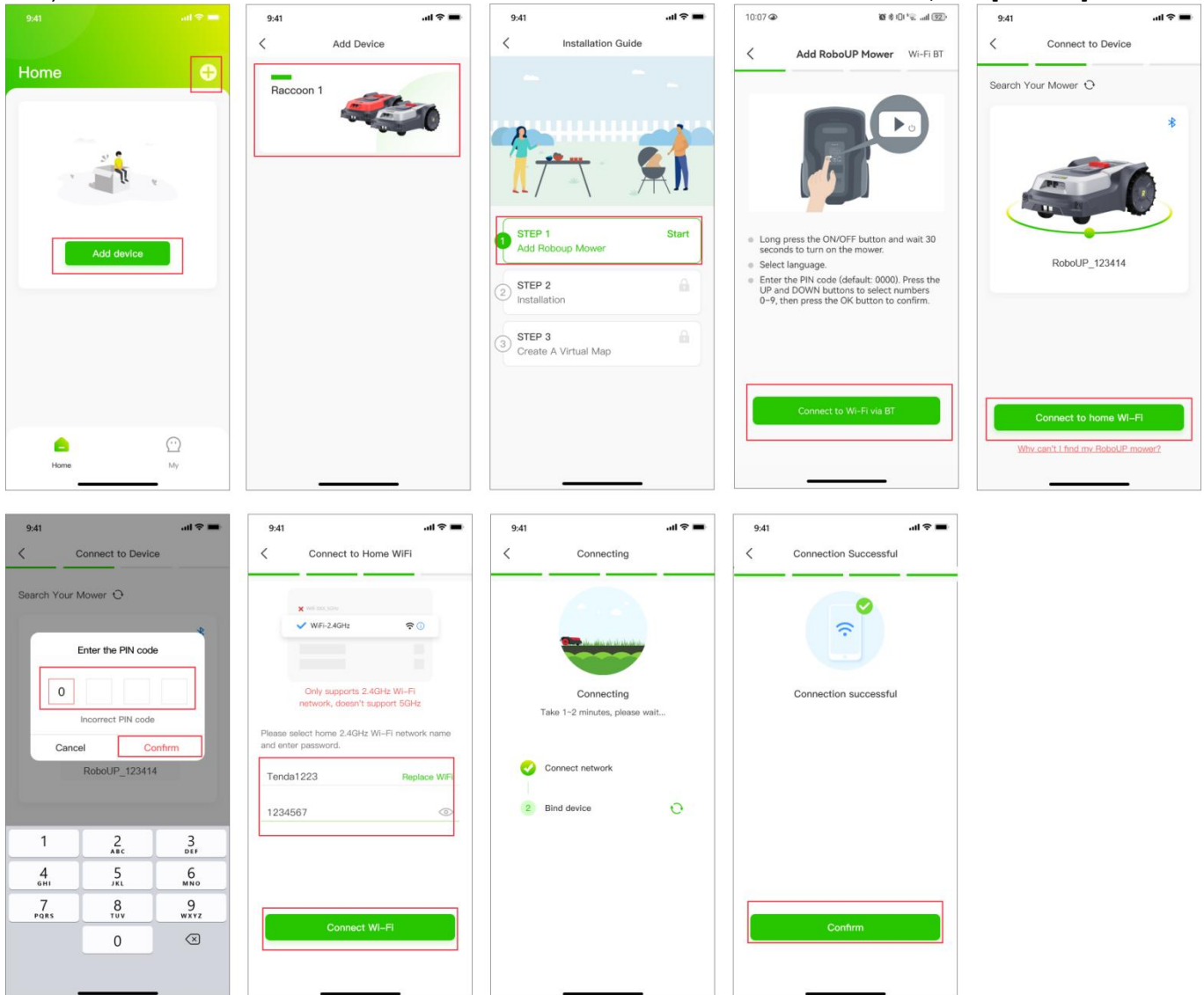
The APP's basic installation guide will pop up in case you want to add a new device to your account.

3.1 Step 1: Add a RoboUP® Mower

3.1.1 Connect Wi-Fi by BT:

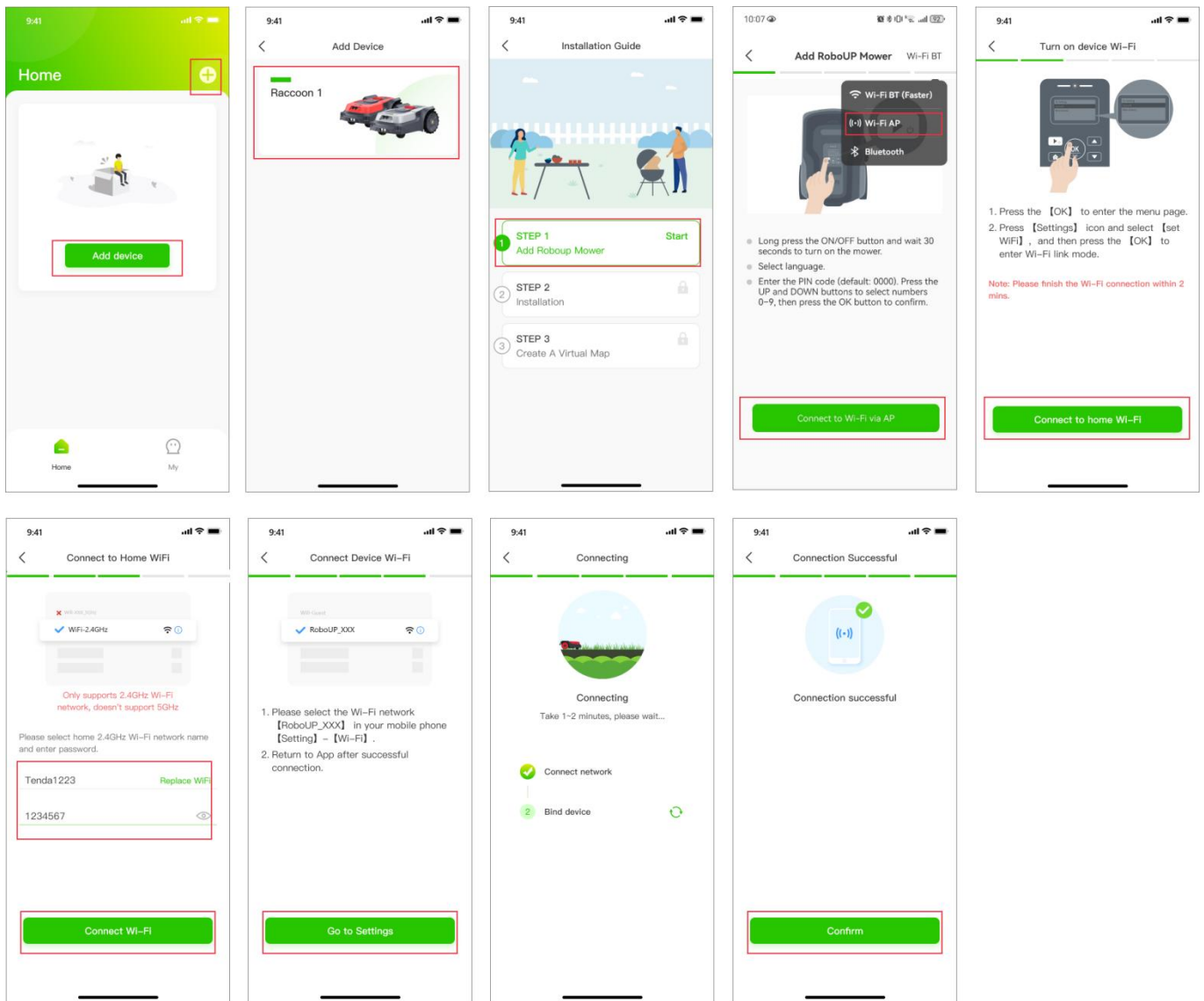
- 1) On the home page, click **[Add device]** or **[+]** in the upper right corner.

- 2) Select the product series to add.
- 3) Select your mower model and tap **[Step 1: Add RoboUP Mower]** to enter the installation guide.
- 4) Follow the steps prompted by the APP, Long press(3s) the power button of the mower to power on it, then return to the APP and click **[Connect to Wi-Fi via BT]**.
- 5) Select the mower to connect and click **[Connect to home Wi-Fi]**.
- 6) Enter the PIN code of the mower (the default code is 0000), and then click **[Confirm]**.
- 7) Enter your home Wi-Fi and Wi-Fi password and click **[Connect Wi-Fi]**.
- 8) Wait for the mower to be connected to the Internet. After the successful connection, click **[Confirm]** to finish.



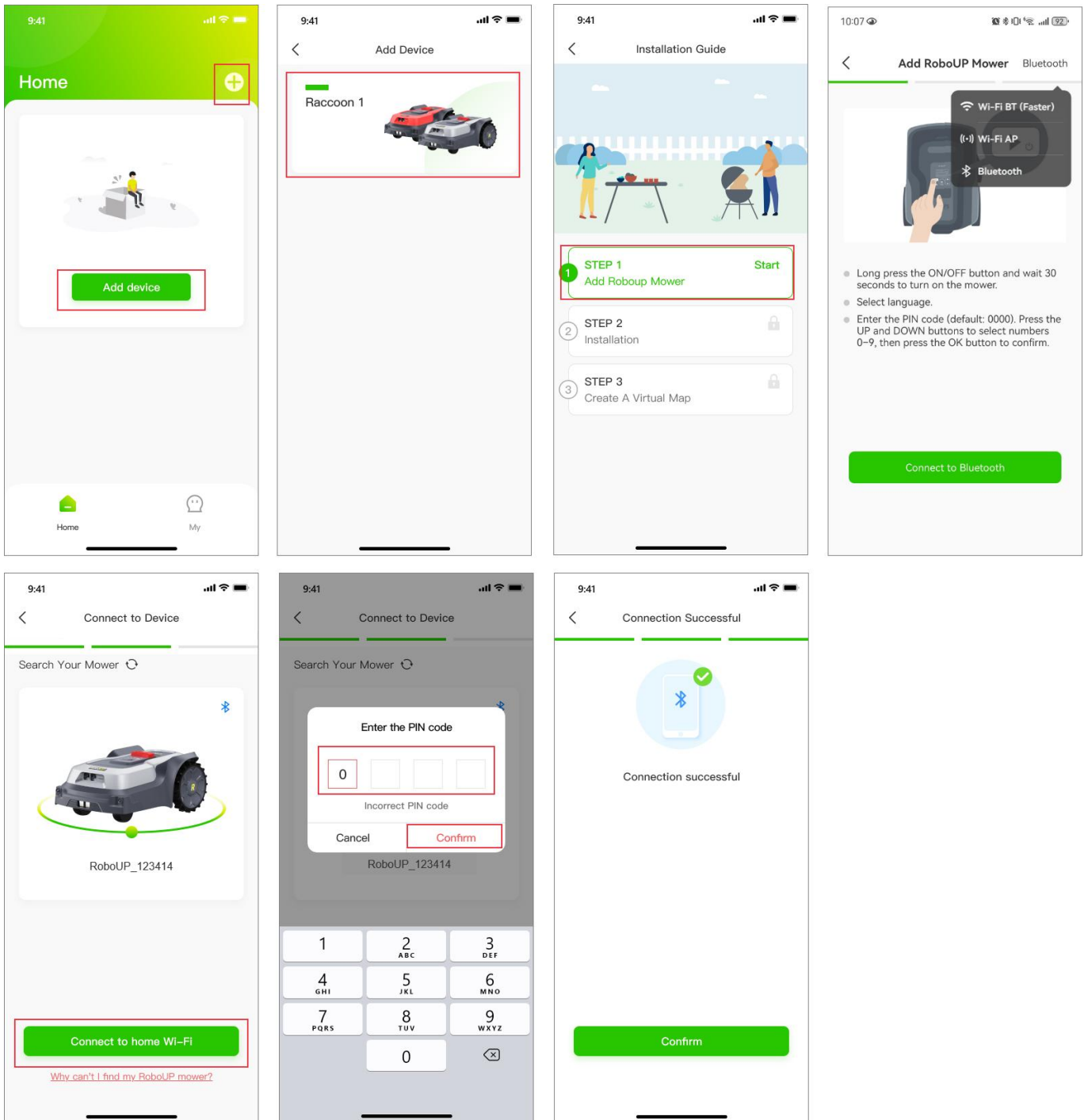
3.1.2 Connect Wi-Fi by AP:

- 1) On the home page, click **[Add device]** or **[+]** in the upper right corner.
- 2) Select the product series to add.
- 3) Select your mower model and tap **[Step 1: Add RoboUP Mower]** to enter the installation guide.
- 4) Follow the steps prompted by the APP, Long press(3s) the power button of the mower to power on it, then return to the APP, click on the **[Wi-Fi BT]** in the top right corner, select **[Wi-Fi AP]**, and then click on **[Connect to Wi-Fi via AP]**.
- 5) Turn on **[Set WiFi]** of the mower according to the steps prompted by the APP, and then return to the APP and click **[Connect to home Wi-Fi]**.
- 6) Enter your home Wi-Fi and Wi-Fi password and click **[Connect Wi-Fi]**.
- 7) Click **[Go to Settings]** to enter the mobile phone system's Wi-Fi settings page and connect to the hotspot of the mower (RoboUP_).
- 8) After connecting, return to the APP and wait for the mower to be connected to the Internet. After the successful connection, click **[Confirm]** to finish.



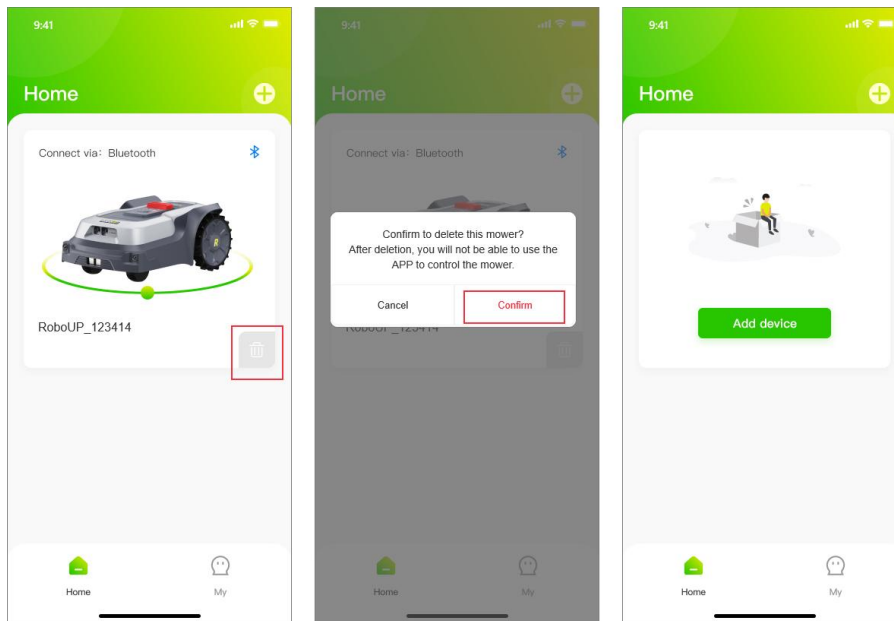
3.1.3 Bluetooth:

- 1) On the home page, click **[Add device]** or **[+]** in the upper right corner.
- 2) Select the product series to add.
- 3) Select your mower model and tap **[Step 1: Add RoboUP Mower]** to enter the installation guide.
- 4) Follow the steps prompted by the APP, Long press(3s) the power button of the mower to power on it, then return to the APP, click on the **[Wi-Fi BT]** in the top right corner, select **[Bluetooth]** , and then click on **[Connect to Bluetooth]**.
- 5) Select the mower to connect and click **[Connect to home Wi-Fi]**.
- 6) Enter the PIN code of the mower (the default code is 0000), and then click **[Confirm]**.
- 7) Wait for the mower to be connected to the Internet. After the successful connection, click **[Confirm]** to finish.



3.1.3.1 Delete Bluetooth Connection

- 1) Click the **[Delete]** or **trash-can** icon under the mower on the home page. Click **[Confirm]** on the pop-up window to delete the phone's Bluetooth connection with the mower.



3.2 Step 2: Installation

Click **[Step 2: Installation]** to install the charging station and RTK base station according to the step prompts and animations.

Note: If the RTK base station module in the package is already attached to the charging station, you have an “All-in-One” version. If the RTK base station module is packed separately, you own a “Split” type.

Refer to the following steps to finish **Step2: Installation**

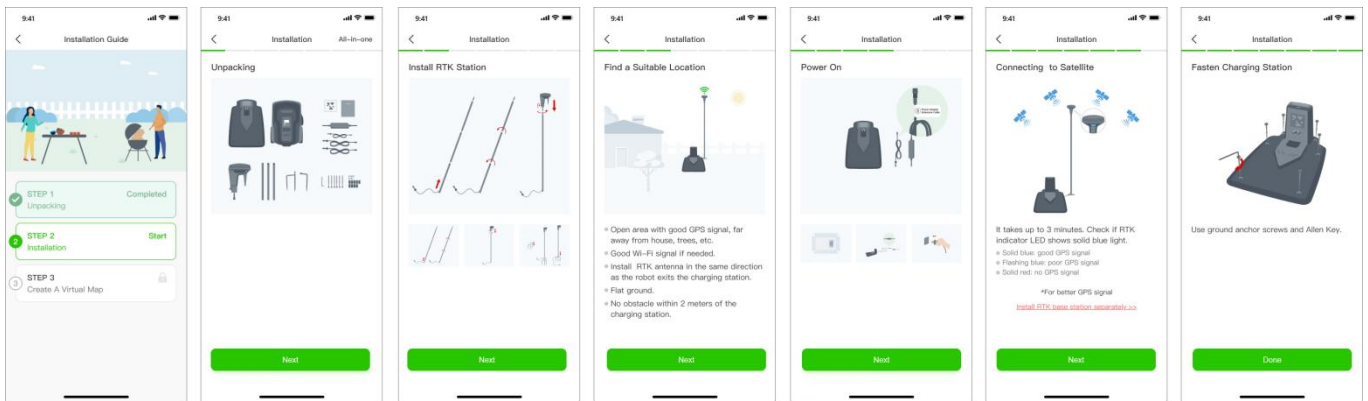
- 1) **Unpacking:** refer to the guide to check if any parts are missing. If parts are missing, contact our RoboUP® service team: service@iroboup.com, otherwise click **[Next]**.
- 2) **Find a suitable location:** A suitable location should be flat without obstacles within 2m of the charging station. Good Wi-Fi coverage is required. Once you have found a good spot return to the APP and click **[Next]**.

NOTE: there are 2 extension cords: one for the charging station and another one for the RTK base station module.

- 3) **Power up the charging station:** If needed take the power extension cord and put it in-between the power adapter and the charging station. Then connect the power adapter to a mains electricity power socket to power up the charging station. Once completed, return to the APP and click **[Next]**.
- 4) **Connecting to Satellites:** Wait for at least 3 minutes to receive as many GNSS satellite signals as possible. Check if the signal indicator LED of the RTK base station modules turns solid blue. Once completed, return to the APP and click **[Next]**.

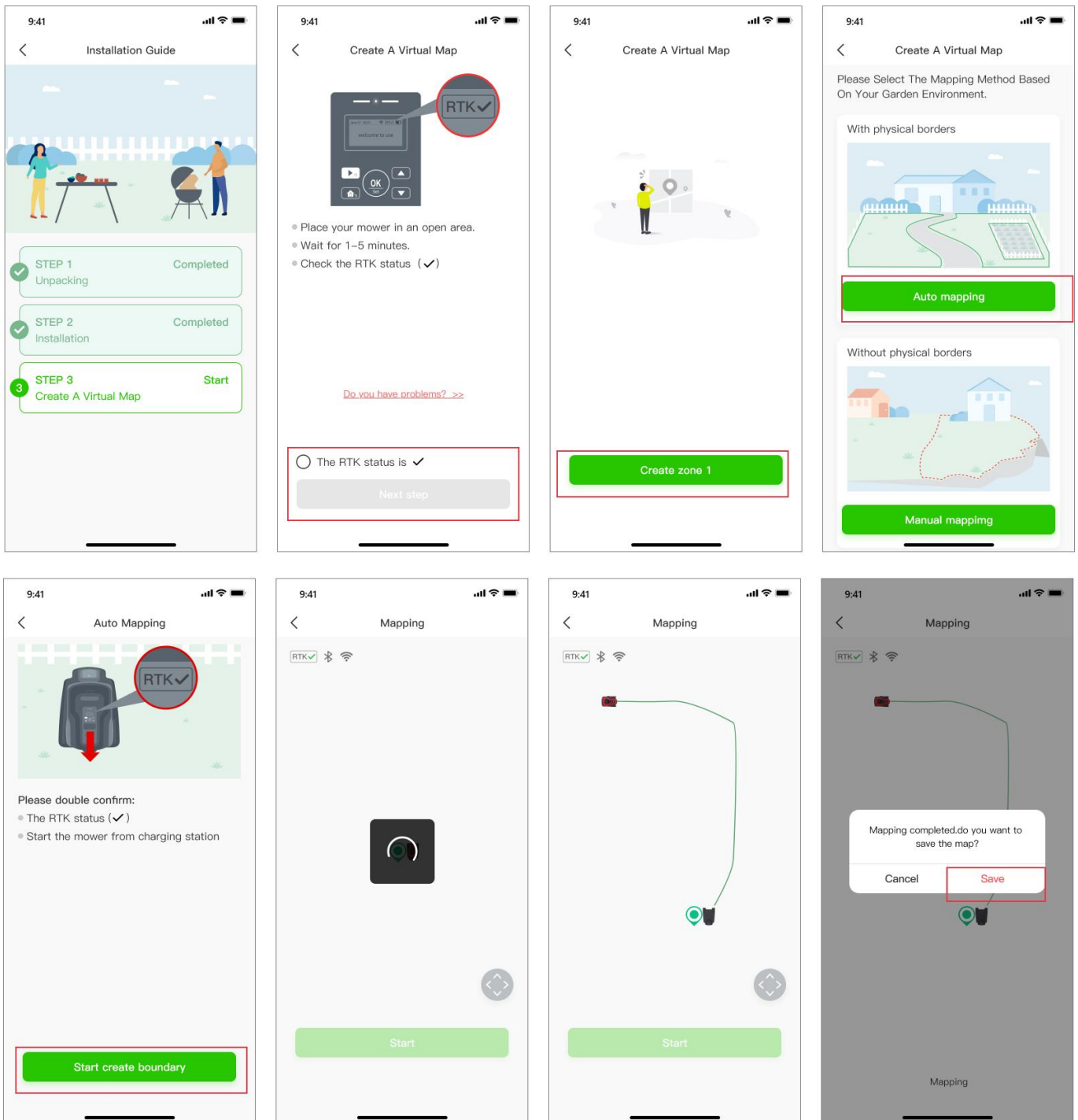
Note: If the signal indicator LED of the RTK base station cannot turn solid blue for a long time, detach the RTK base station from the charging station and install it in another proper elevated location using the RTK extension cord. For details, click and view [Install RTK Station Separately].

- 5) **Fix the charging station:** After the previous steps are done well, use a wrench and fixing nails to fasten the charging station in the ground. Once completed, return to the APP and click **[Done]** to return to the **[Installation Guide]**.



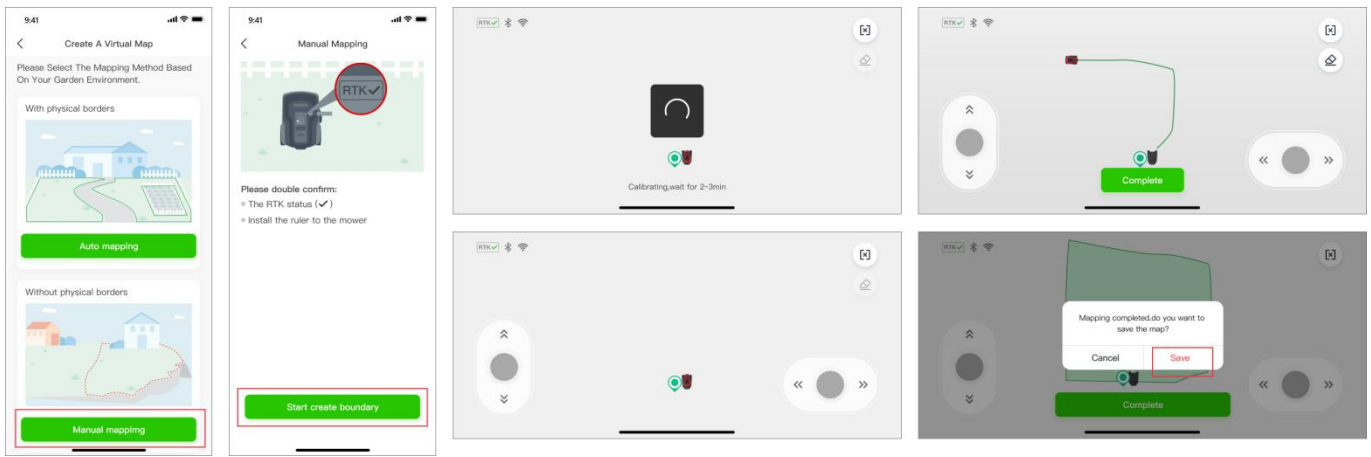
3.3 Step 3: Create a Virtual Map

- 1) **Create a virtual map:** Click **[Step 3: Create a virtual map]** to enter the mapping page. Check if the RTK icon on the LCD User Interface (UI) display is [✓]: if yes, check the button at the bottom and click **[Next step]**.
- 2) **Build the main boundary map** (that is the garden zone where the charging station is located): click **[Create Zone 1]**. Choose the method of mapping according to the garden environment: “Auto mapping” or “Manual mapping”.
 - a. **Auto mapping:** If the garden has physical borders (fences, walls, etc.) click **[Auto mapping]** to enter the next page. Click **[Start creating boundary]**. First the mower will calibrate automatically. Once finished it will leave the charging station and automatically build a boundary along the edges/physical borders. After the mower has almost fully returned to the charging station, wait for the pop-up window and click **[Save]** to save the map.



- b. **Manual mapping:** If the garden has NO physical borders click [**Manual mapping**] to enter the next page. If needed install the ruler from the package). Click [**Start creating boundary**] to enter the manual mapping page. Once the mower has finished calibration, use the two thumb slide controllers to manually steer the mower generating a boundary along the edges. After the mower has almost fully returned to the charging station, wait for the pop-up window and click [**Complete**] and [**Save**] to save the boundary map.

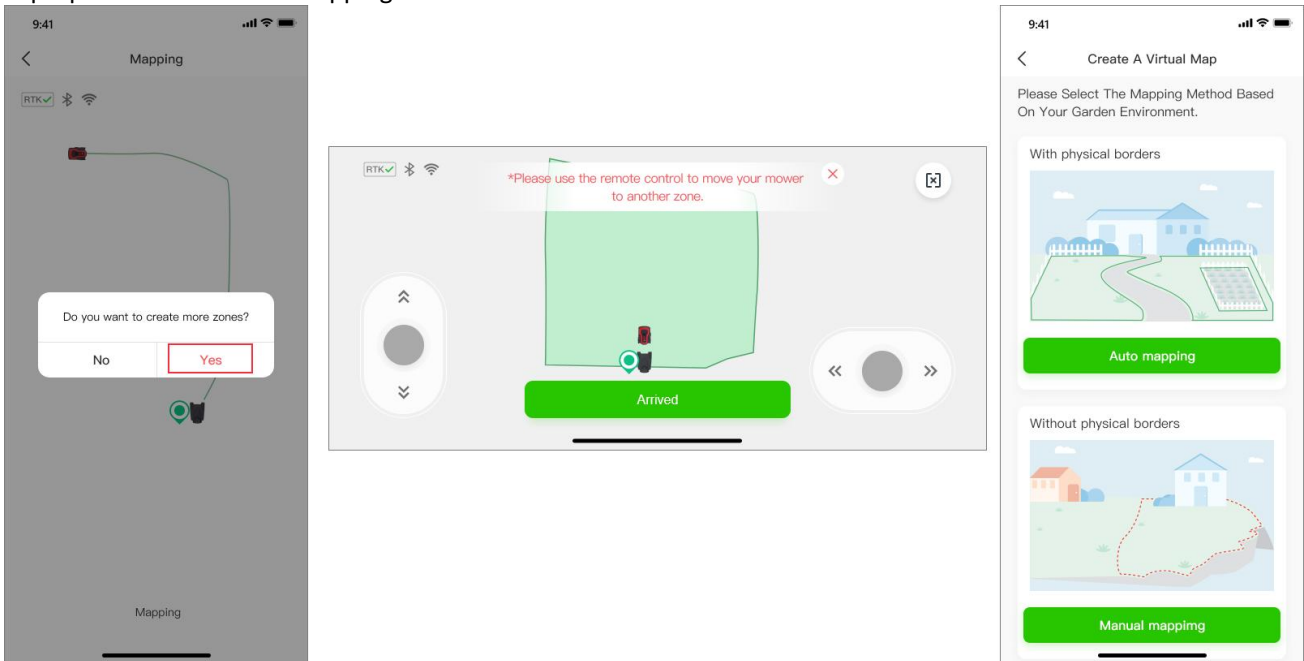
Note: For a stable Bluetooth connection during mapping we recommend you walking behind the mower closely (max. 3m distance).



Sliding Controllers for moving mower “forwards/backwards” and “left/right”

3.3.1 More than one lawn area

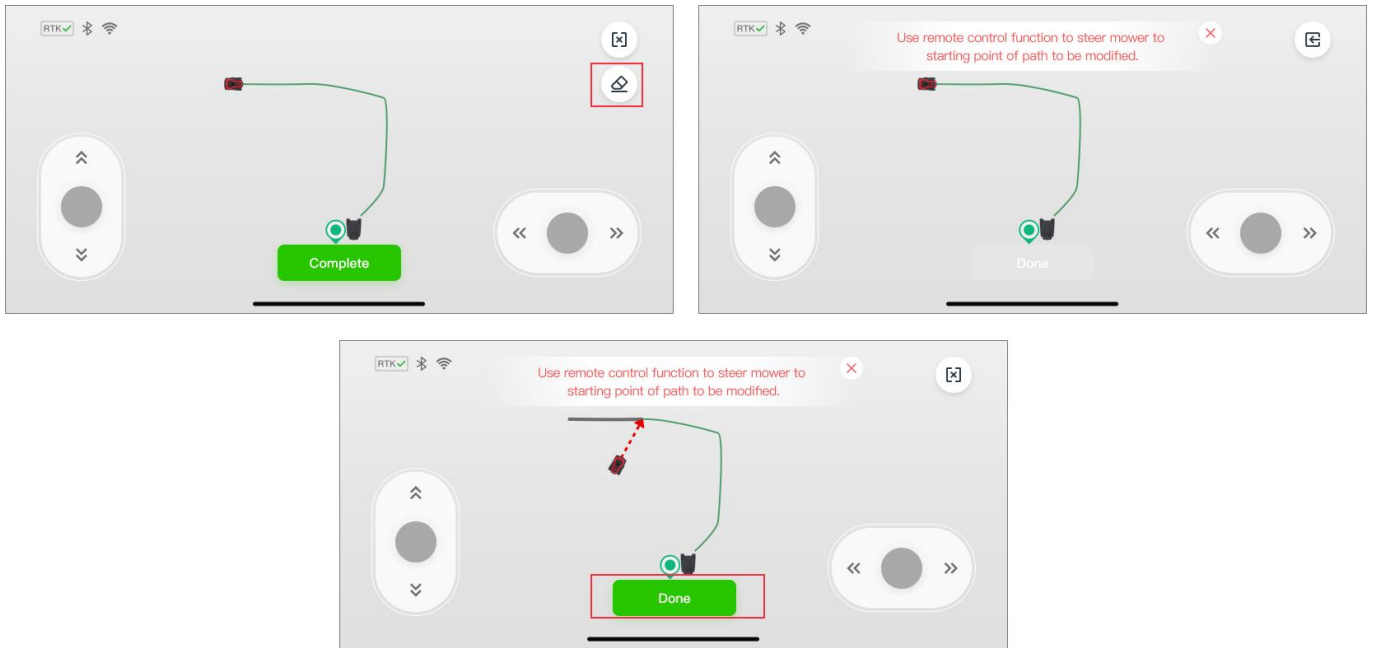
- 1) If there is more than one lawn area, after the first area is built, click **Yes** on the pop-up page to create the boundaries of the other areas. On the controller page, use the two thumb sliders to turn the mower to the new starting point.
- 2) On the following page click **Yes, the mower has arrived**. Refer to **3.3 Create the main boundary** to choose the proper method for the mapping.



3.3.2 Map Erasing

Note: Presently this function is only supported in manual mapping. In case the mower has problems to work along the path of the boundary you need to fix this. Start this function and steer the mower to the starting point that needs to be modified.

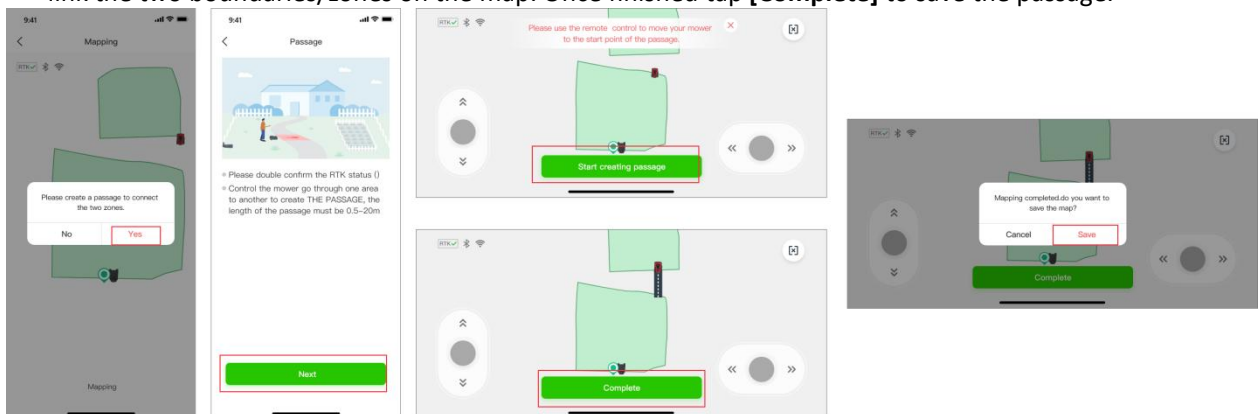
- 1) On the manual mapping page, click the **Eraser** icon in the upper right corner to enter the map modification page. Use thumb sliders “up/down - left/right” for mower steering.
- 2) Once the mower has reached a point of the boundary that you want to modify, click **Done**. This part of the boundary will be erased. Continue now to create a corrected map.



3.3.3 Create a Passage

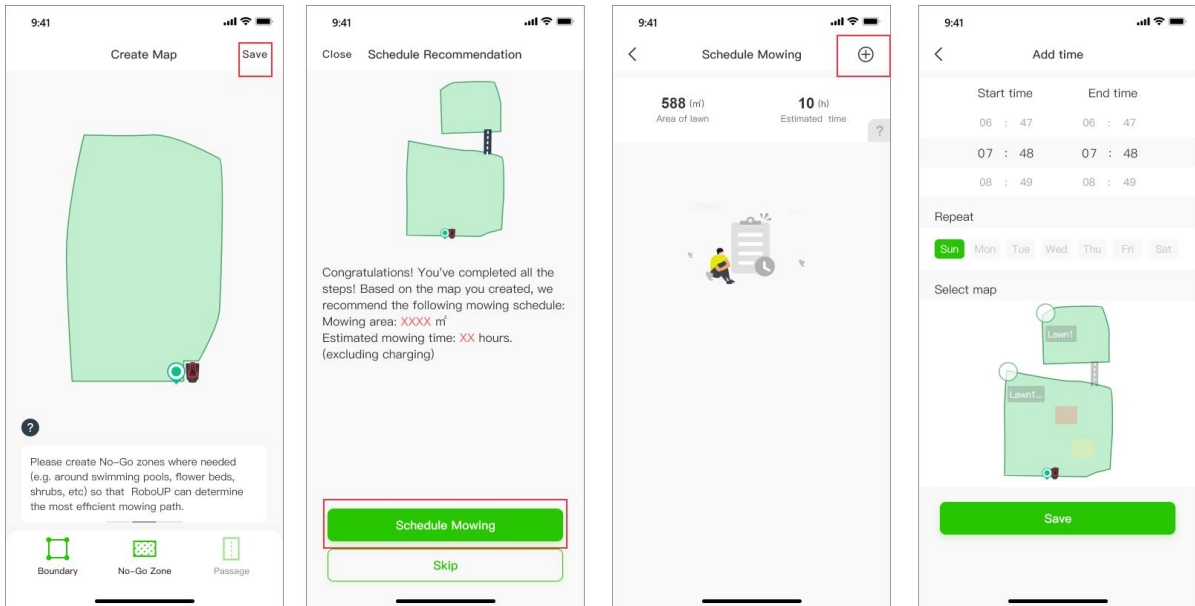
Once a secondary boundary has been mapped you need to create a passage to link it with the first zone (assuming that a proper physical pathway exists). For that click **[Yes]** on the pop-up prompt **[Please Create a Passage to Connect the Two Zones]**.

- 1) Make sure the length of the physical passage is between 0.5-20 meters. Click **[Next]** to enter the zone overview page. Use thumb sliders “forward/backward” and “left/right” and steer the mower to the starting point of the passage.
- 2) Now click **[Start creating passage]** and use thumb sliders to steer the mower through the physical passage to link the two boundaries/zones on the map. Once finished tap **[Complete]** to save the passage.

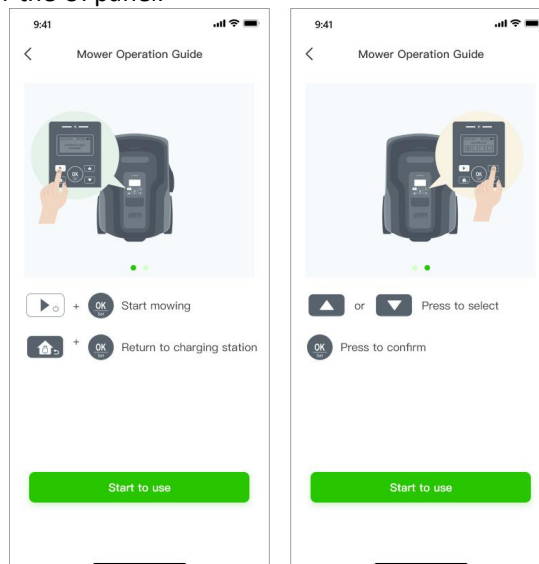


3.3.4 Finish the Mapping

- 1) If there are any objects (pool, flower bed, sandbox, etc.) that you need to protect from the mower, click **[No-go Zone]** to create “no-go-zones”. Once all boundaries, passages, and “No-go Zones” have been created, click **[Save]** to finish mapping. The next page shows a recommended mowing schedule. In order to overwrite it and set your own timetable click **[Schedule Mowing]**.



- 2) The APP will eventually lead you to an introduction how to operate the keys and LC display of the mower's User Interface (UI) panel. Make sure you are familiar how to use it. Click **[Start to use]**. Now you can operate the mower by either the APP or the UI panel.



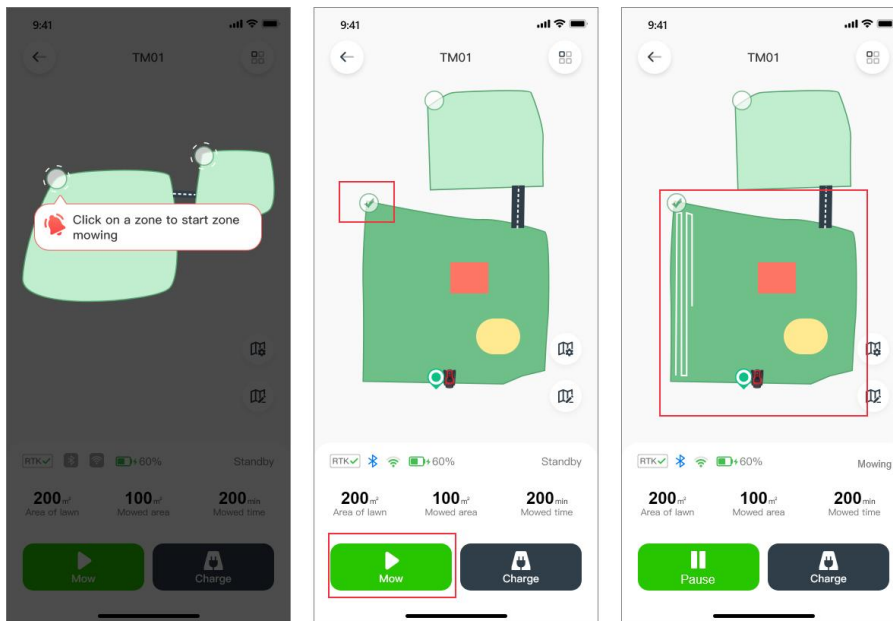
Note: For an in-depth guide how to edit maps, refer to "6 Map editing".

4 Mowing Settings

4.1 Selective Zone Mowing

On the map page, tap the green circle icon of the zone that you want to mow, then click **[Mow]** to mow the selected zone.

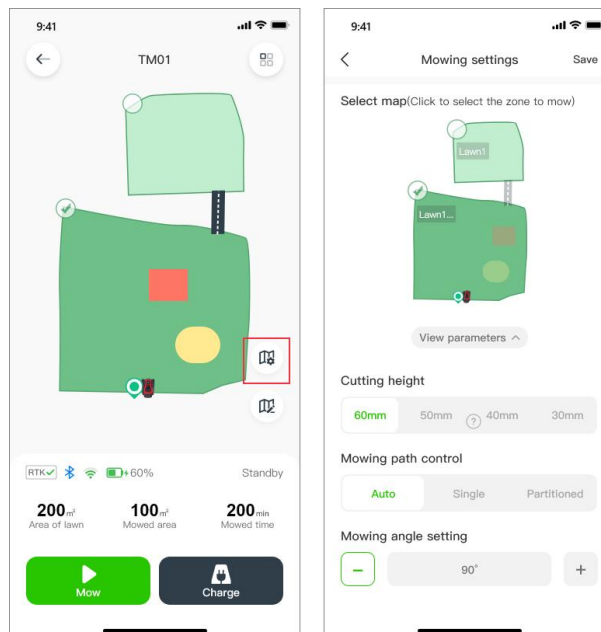
Note: A zone/area cannot be selected when the mower is busy (mowing or returning to the charging station). Wait until the current task is completed or the mower is in the charging station. Now you can chose a zone for mowing.



4.2 Customized Mowing Parameters

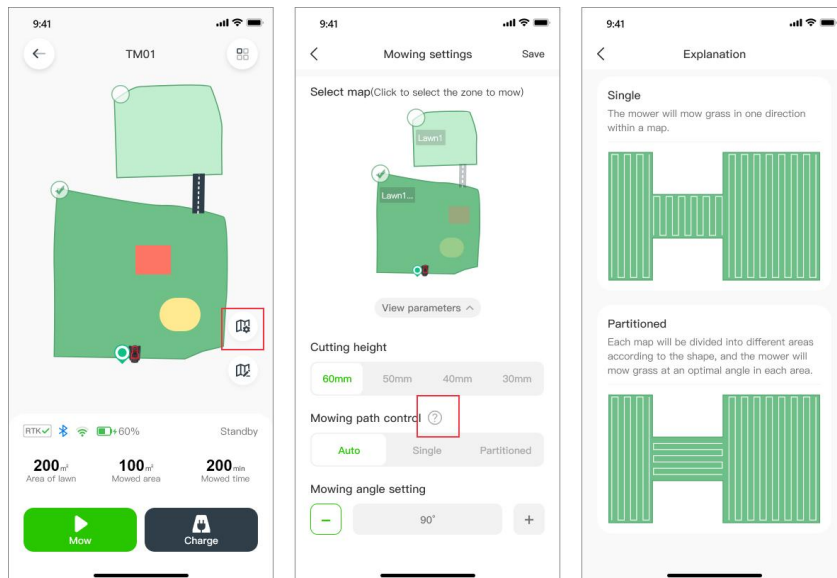
- 1) On the map page, tap the green circle icons of the zones. Click **[Mapping settings]** icon to enter the **[Mowing settings]** page, where you can set the mowing height, mowing path type and mowing angle, either for the whole lawn or selected zones.

Note: If you need to customize the mowing schedule for different zones, refer to 8.3 Schedule Mowing.



Note: Avoid creating customized mowing parameters with an underlying poor quality map, which was created when the RTK signal wasn't "✓" during mapping.

- 2) The mowing angle can only be changed when a **[Single]** mowing path is selected. Click "?" for more detailed info.



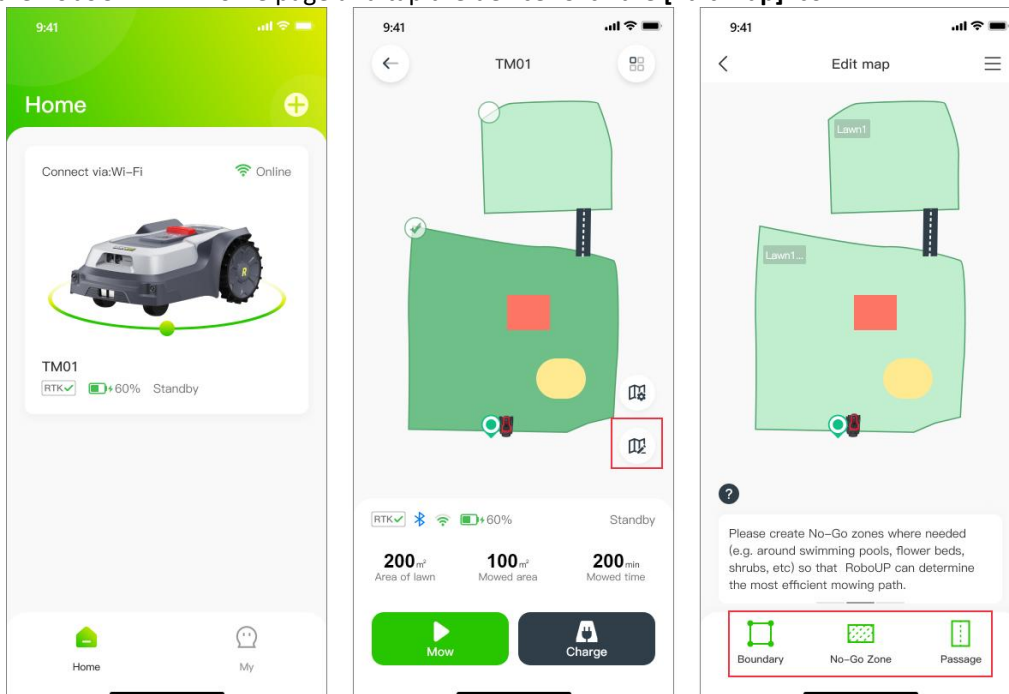
5 Map Editing

In case you need to edit an existing map, the tutorials below may be helpful.

5.1 Add a Boundary

If you want to add a boundary for a new area to an existing map or you need to create a entirely new map, refer to the following steps how to edit a map:

- 1) Open the RoboUP® APP home page and tap the device. Click the **[Edit map]** icon.

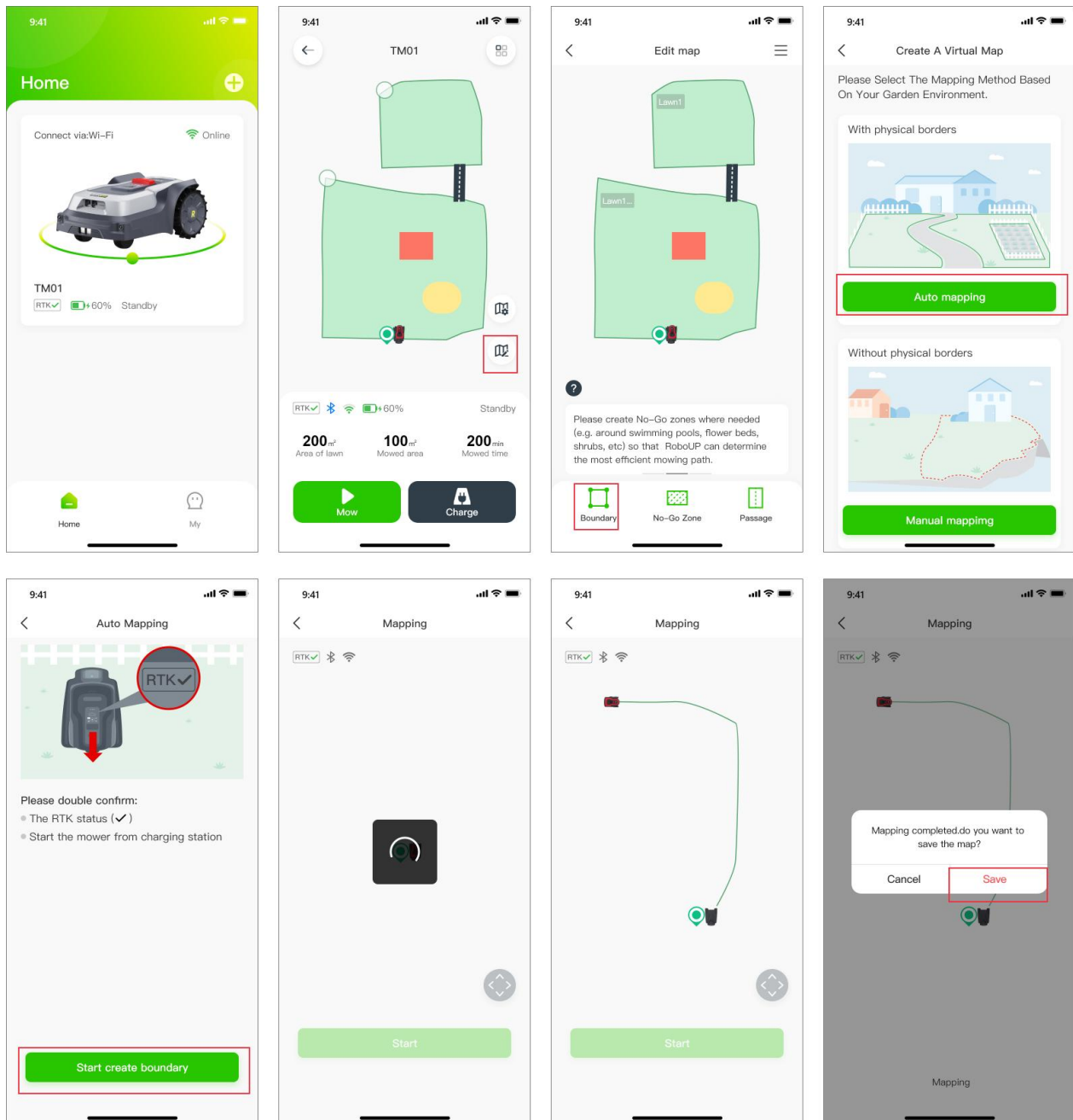


- 2) On the **[Create a Virtual map]** page, choose the proper method of mapping according to the garden environment: Auto mapping or Manual mapping.

Note: if the new boundary is the main one (which means the charging station is included), the mower will do auto calibration during the process. If it is not the main boundary, the mower will not do an auto calibration.

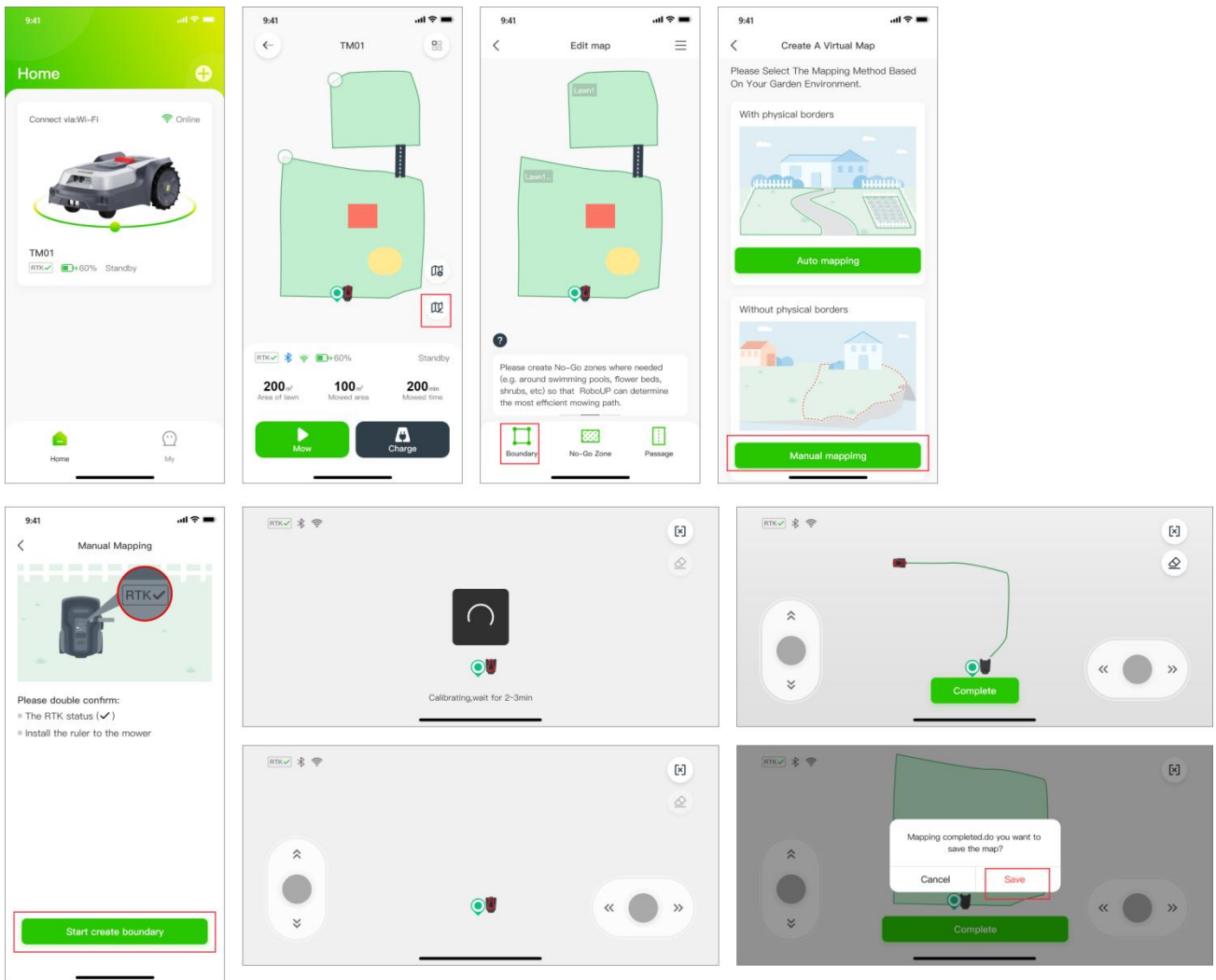
- a. **Auto mapping:** If the garden has visible physical borders (fences, walls,...) click **[Auto mapping]** to enter the next page **[Mapping]**. Make sure the **RTK icon** is ✓. Click **[Start create boundary]**. When creating a

new main boundary the mower will calibrate once automatically. Thereafter it will drive out of the charging station and automatically build a boundary along the edges of the borders. When the mower is re-approaching the charging station a pop-up window is prompting you to save the map. Click **[Save]**.



- b. **Manual mapping:** If the garden has no physical borders, choose **[Manual mapping]** to enter the next page. Make sure the **RTK icon** is \checkmark . If needed install the carton ruler (see packaging) and check \odot button at the bottom. Click **[Start create boundary]** to enter the **[Manual Mapping]** page. Once the mower finished calibration, use thumb sliders on the controller page and steer the mower manually building a boundary path along the edge. When the mower is re-approaching the charging station a pop-up window is prompting you to save the map. Click **[Complete]** and **[Save]**.

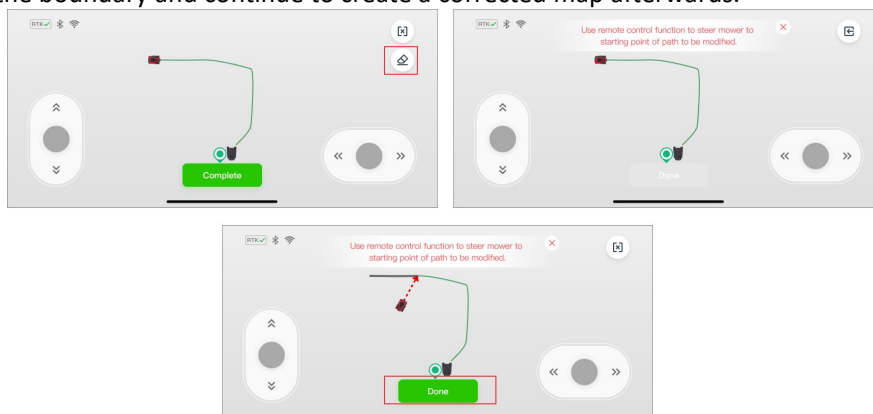
Note: For a stable Bluetooth connection during mapping we recommend you walking behind the mower closely (max. 3m distance).



5.2 Map Erasing

Note: Presently this function is only supported in manual mapping. In case the mower has problems to work along the path of the boundary you need to fix this. Start this function and steer the mower to the starting point that needs to be modified.

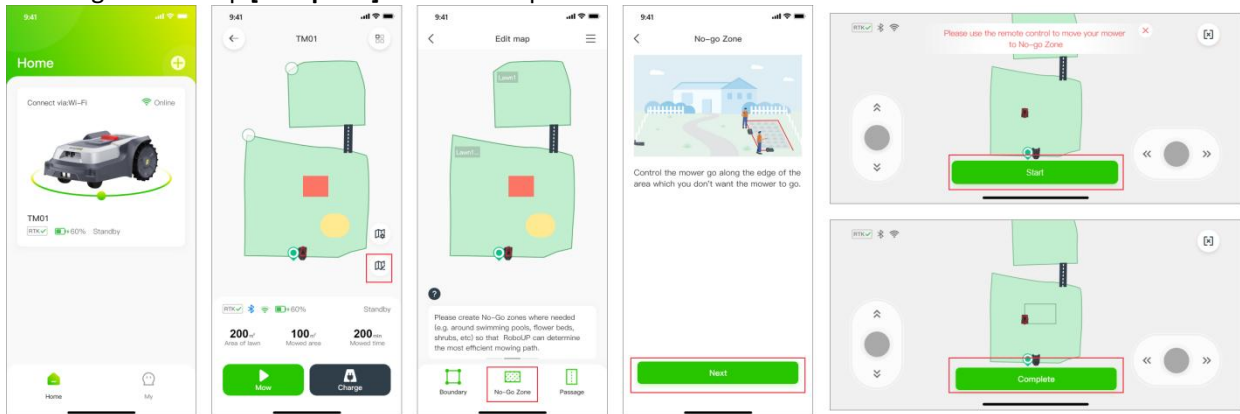
- 1) On the manual mapping page, click the [Eraser] icon in the upper right corner to enter the map modification page.
- 2) Use the thumb sliders and steer the mower to the starting point of the boundary path you want to modify.
- 3) Steer the mower back to the point of the boundary that needs to be modified. Click [Done] to erase this segment of the boundary and continue to create a corrected map afterwards.



5.3 Create a No-go Zone

If there are trees, swimming pools, trampolines, etc. in the middle of the garden, it is recommended to create “No-go Zones” instructing the mower to avoid them.

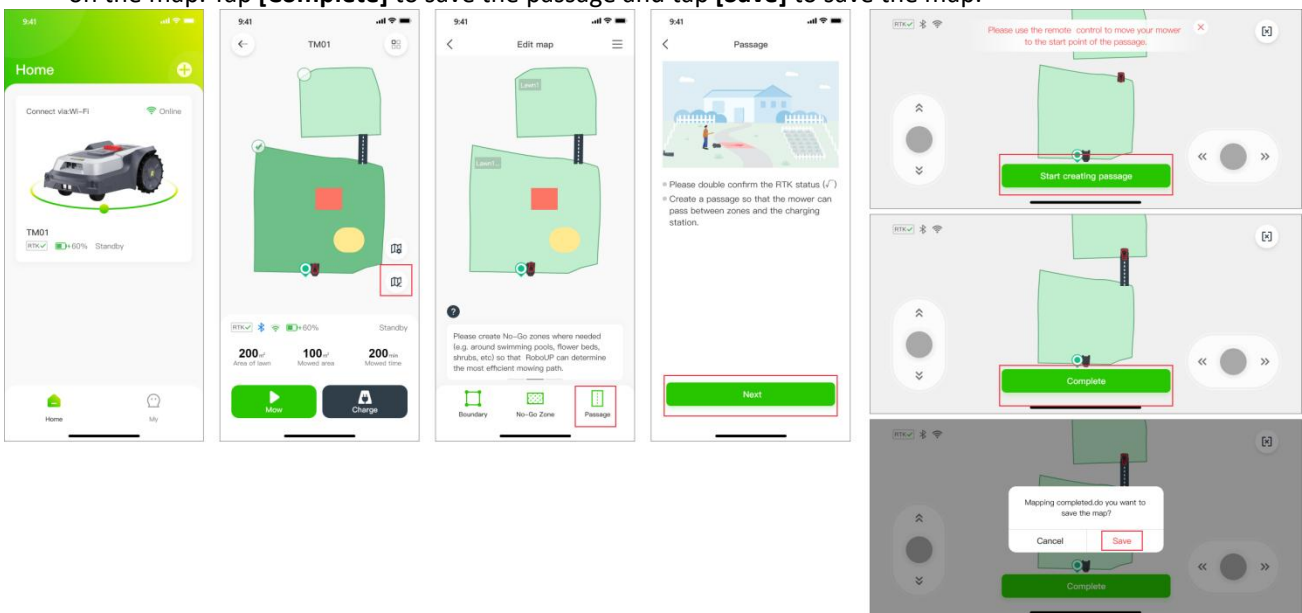
- 1) Open the RoboUP® APP and tap the device on the home page. Click **[Edit map]** icon on next page.
- 2) On the **[Edit map]** page, click **[No-Go Zone]** at the bottom and tap **[Next]** after reading the tip how to go to the controller page.
- 3) If needed use the thumb sliders and steer the mower to the starting point of the boundary path of the future “No-go Zone”. Tap **[Start]** to go next.
- 4) Use the thumb sliders and steer the mower running full circle around the object that you want to put into a “No-go Zone”. Tap **[Complete]** to finish the process.



5.4 Create a Passage

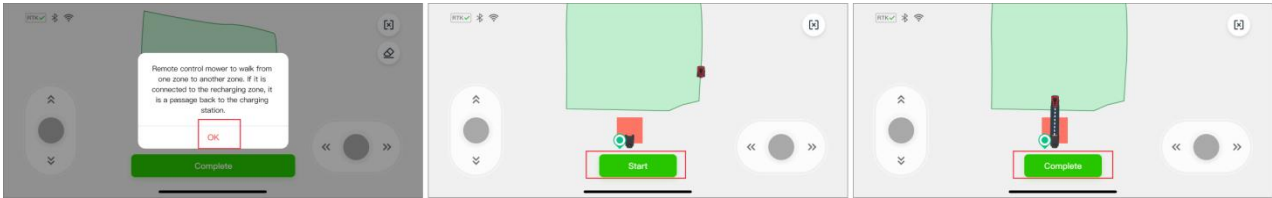
If you have created more than one boundary and if there is a physical path for the mower to use travelling from one zone to the other, a **[Passage]** must be created to link the zones:

- 1) Open the RoboUP® APP and tap the device. Click the **[Edit Map]** icon.
- 2) On the **[Edit Map]** page, click **[Passage]** at the bottom and on next page tap **[Next]** after reading the tip how to go to the controller page.
- 3) If the mower is not at the spot where you want to start creating a passage, use thumb sliders and steer it to the start point. Tap **[Start]** to go next.
- 4) Use again the thumb sliders to steer the mower through the physical passage to link the two boundary zones on the map. Tap **[Complete]** to save the passage and tap **[Save]** to save the map.



- 5) If the charging station is installed in a zone outside the boundary, it requires a passage between the charging station zone and the boundary zone. Otherwise, the mower will fail returning to the charging station:

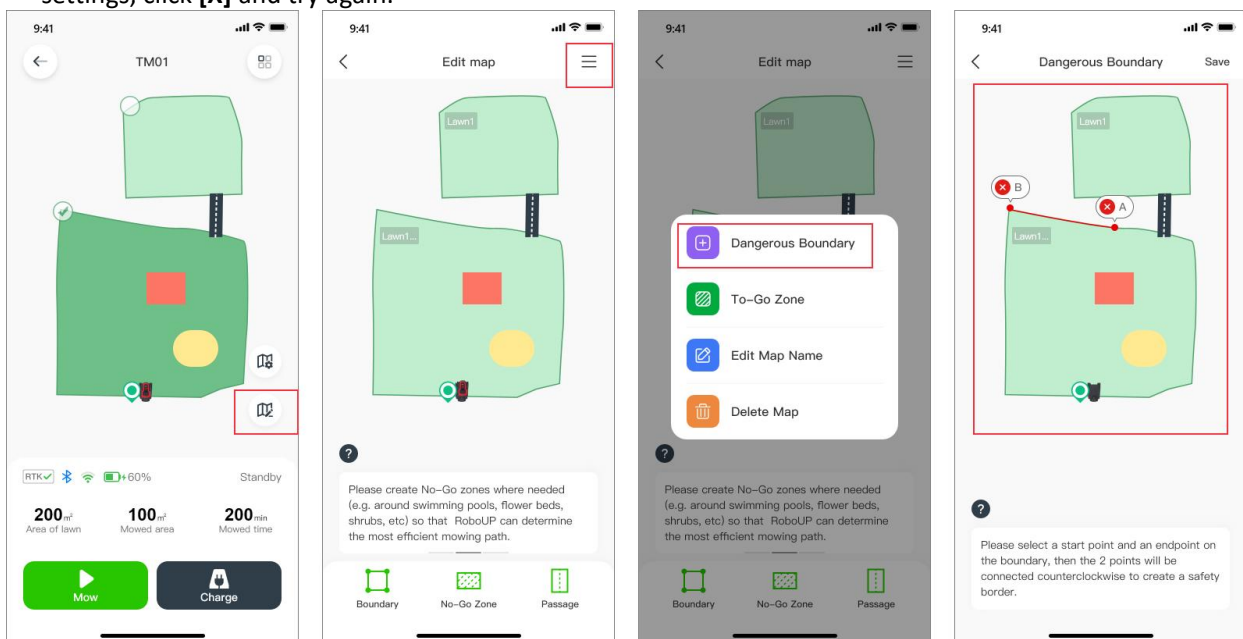
- When creating the main boundary, not including the charging station, a pop-up window will prompt you to create a passage after completing the map building. Click **[OK]** to start creating the passage between zones.
- Use the thumb sliders and steer the mower to the starting point for the passage. Tap **[Start]** to go next.
- Use the thumb sliders again and steer the mower through the passage linking the zones. Tap **[Complete]** to save the passage.



5.5 Dangerous Boundary

If the boundary has no physical border and is near to a cliff, we recommend using the “Dangerous Boundary” function.

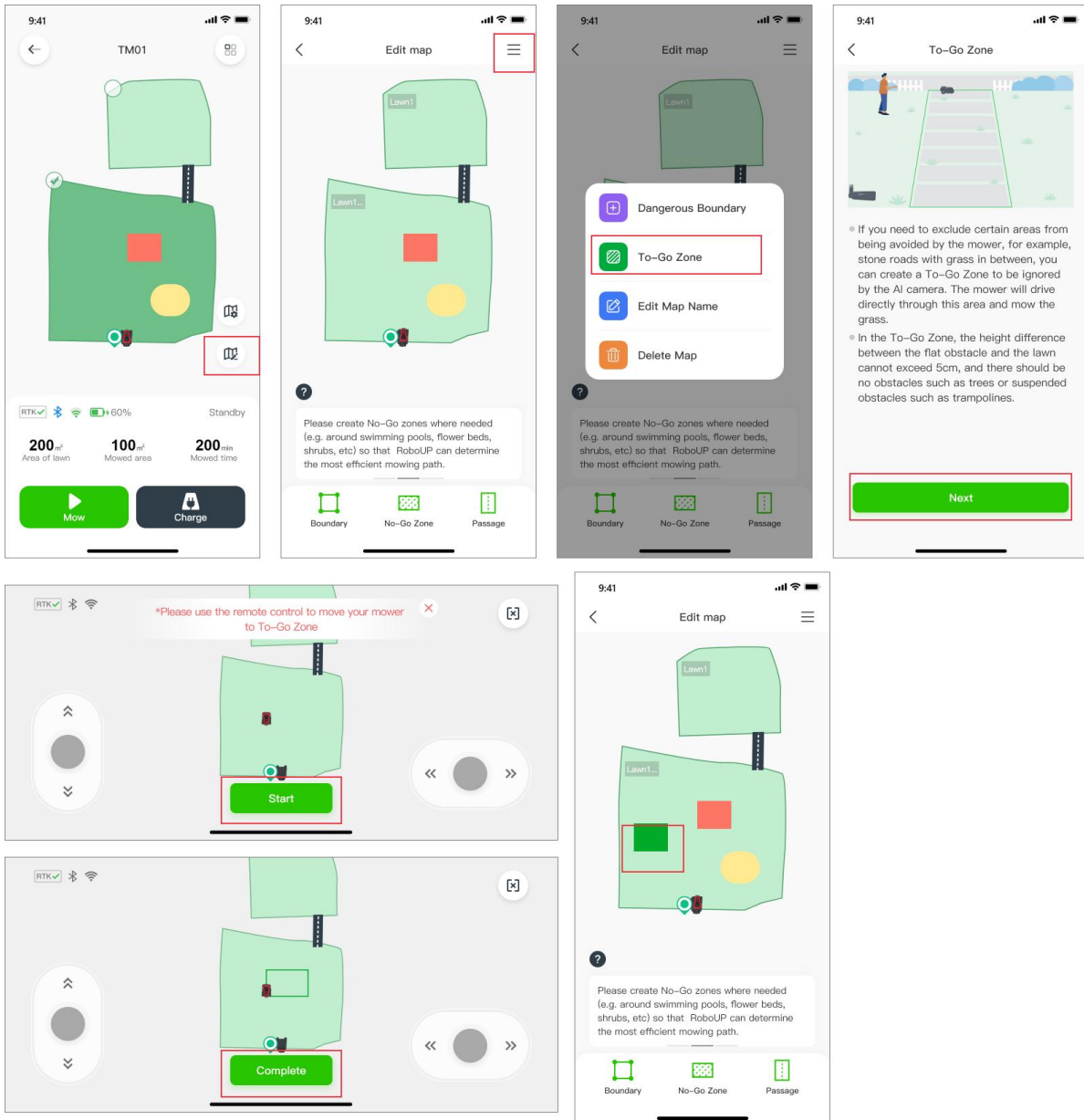
- Open the RoboUP® APP and tap the device on the home page. Click **[Edit map]** icon on next page.
- Tap the **[☰]** icon on the top right corner and on next page select **[Dangerous Boundary]** option.
- On the map page **[Add Dangerous Boundary]**, tap on the boundary to set “A” as the start point and “B” as the end point. Tap **[Save]** on the top right corner to save the dangerous boundary. If you need to modify the settings, click **[X]** and try again.



5.6 To-Go Zone

In rare events you may want to turn off RoboUP® AI obstacle avoidance functionality. To give an example: the AI usually avoids a cobblestone area, but you want to instruct the mower to ignore this and cut the grass growing in-between the stones.

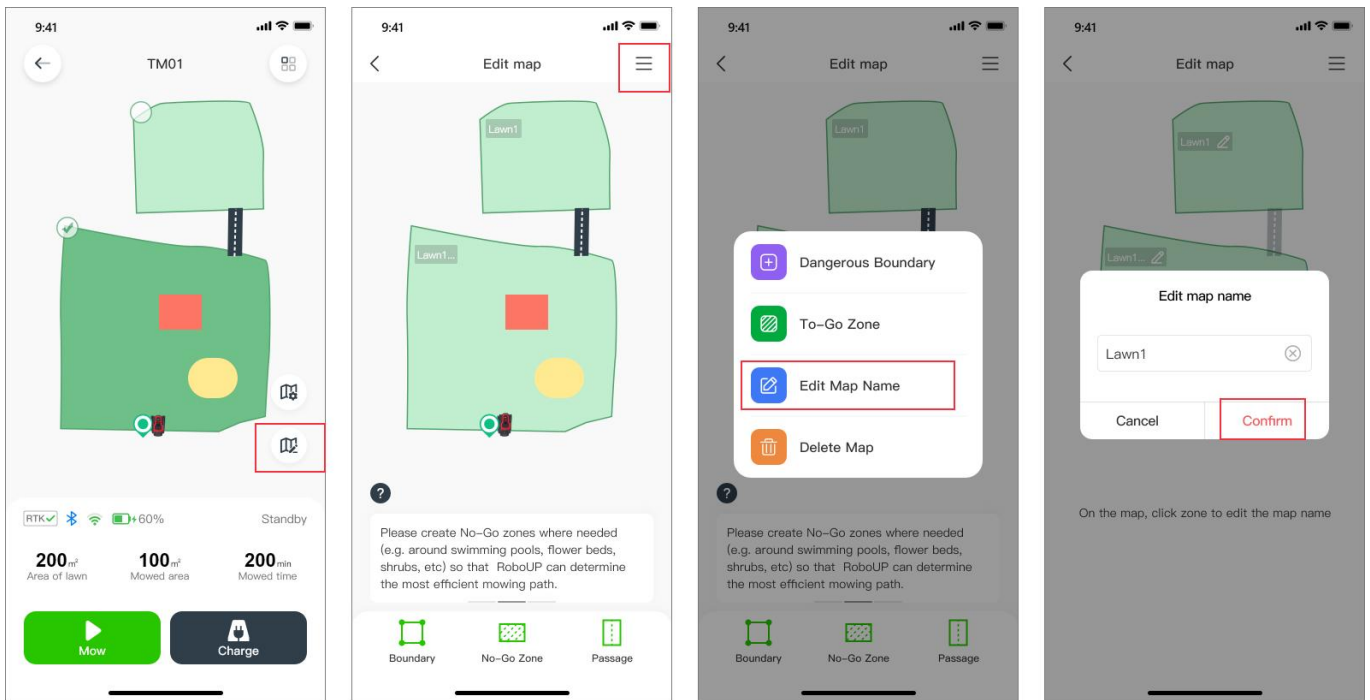
- Open the RoboUP® APP and tap the device on the home page. Click the **[Edit map]** icon on next page.
- Tap the **[☰]** icon on the top right corner and select the **[To-Go Zone]** option.
- If the mower is not at the spot where you want to start creating a To-Go Zone, use the thumb sliders and steer it to the starting point. Tap **[Start]** to go next.
- Use again the thumb sliders and steer the mower to create a boundary of the “To-Go Zone” on the map. After that, tap **[Complete]** to save the “To-Go Zone”.



5.7 Edit Map Name

If there is a need to rename the mapped zones, the following steps will help.

- 1) Open the RoboUP® APP and tap the device on the home page. Click **[Edit map]** icon on next page.
- 2) Tap the **[☰]** icon on the top right corner and select the **[Edit map name]** option.
- 3) On the **[edit map]** page, tap the original name of the zone, then modify it and click **[Confirm]** to save it.

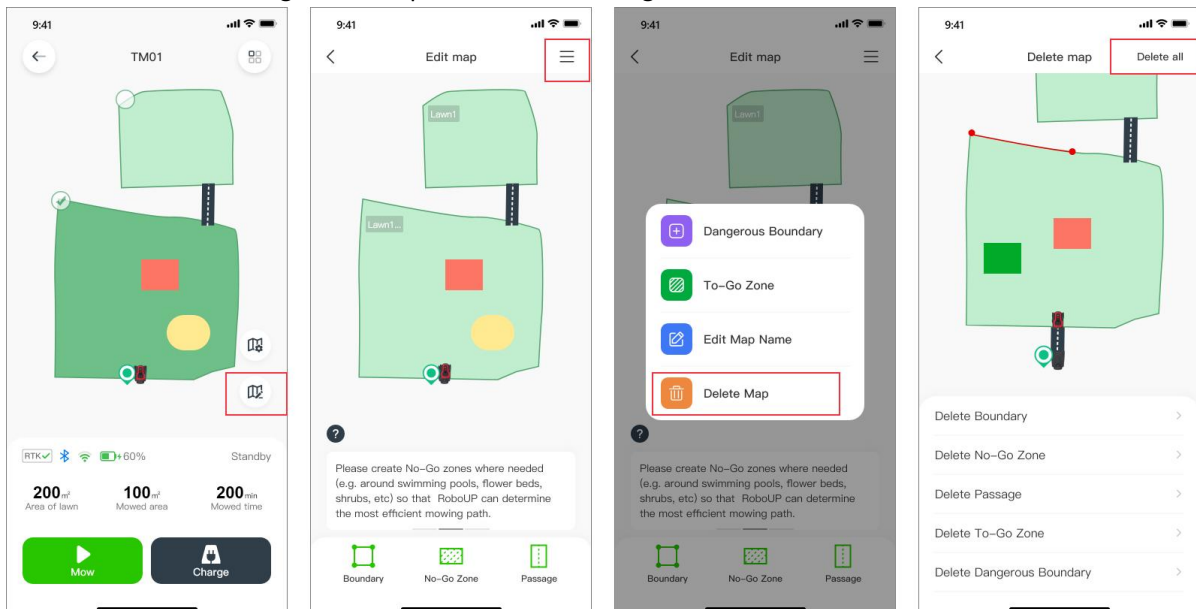


5.8 Delete a Map

5.8.1 Delete Map:

If you need to delete the whole map, or just parts (like No-go-Zones, or passages) of it, refer to the following steps:

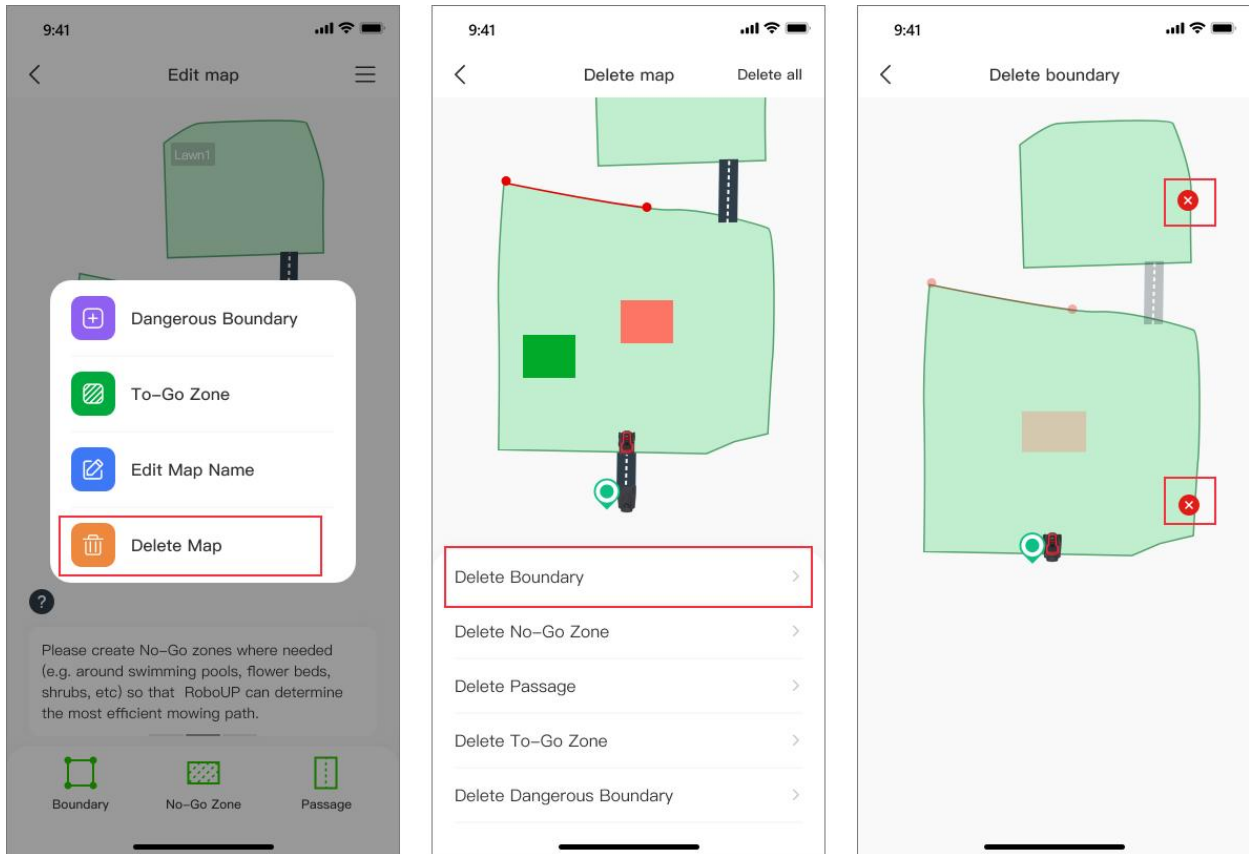
- 1) Open the RoboUP® APP and tap the device. Click the **[Edit map]** icon on the right side of the screen.
- 2) On the **[Edit Map]** page, tap the **[☰]** icon in the top right corner. Choose **[Delete Map]**.
- 3) On the **[Delete Map]** page, choose the desired operation according to your needs:
 - a. **Delete the whole map:** tap **[Delete All]** in the top right corner. The whole map will be deleted. This is suitable for building a new map in a different/new garden.



5.8.2 Delete Boundary:

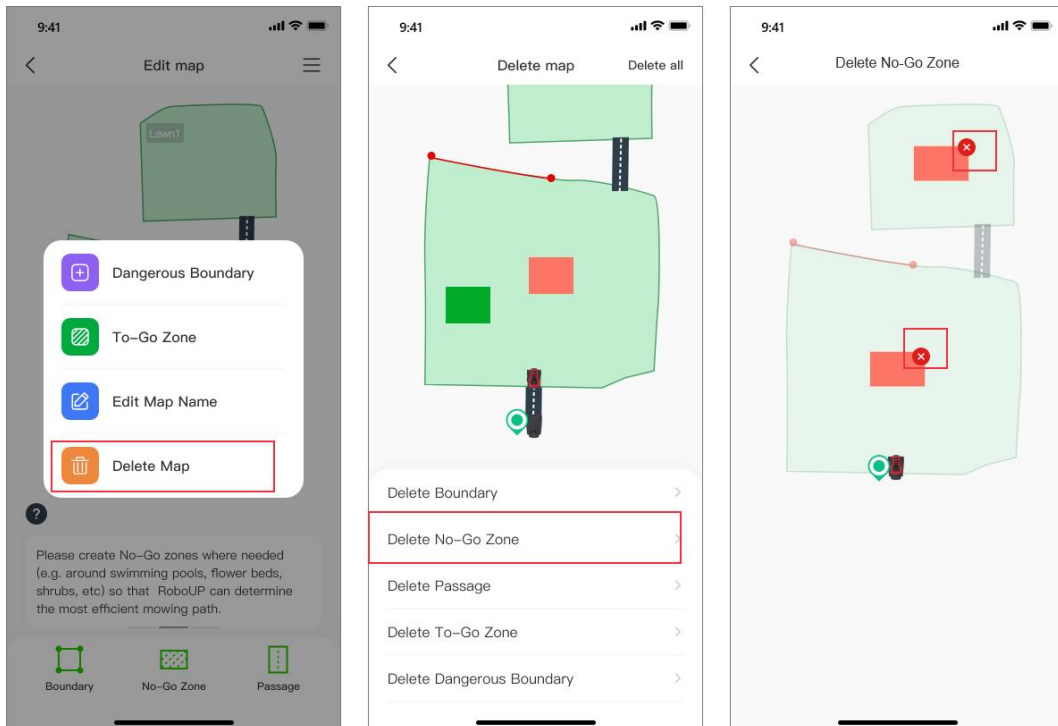
Delete parts of the map: tap the corresponding option at the bottom (for example: if you need to delete boundaries, tap **[Delete boundary]**). On the next page, click the red **[X]** icon on the boundary that you want to delete.

Note: if the main boundary is deleted the whole map (all zones and passages) will disappear.



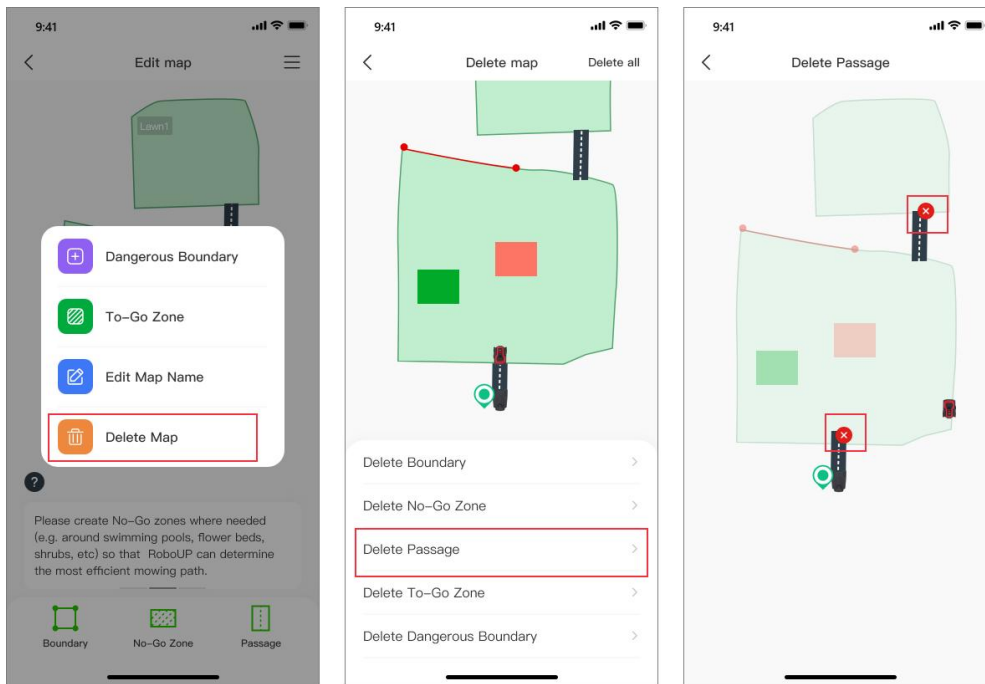
5.8.3 Delete No-Go Zone:

Click the **[Delete No-Go Zone]** at the bottom, and on the next page, click the red **[X]** icon on the No-Go Zone you want to delete.



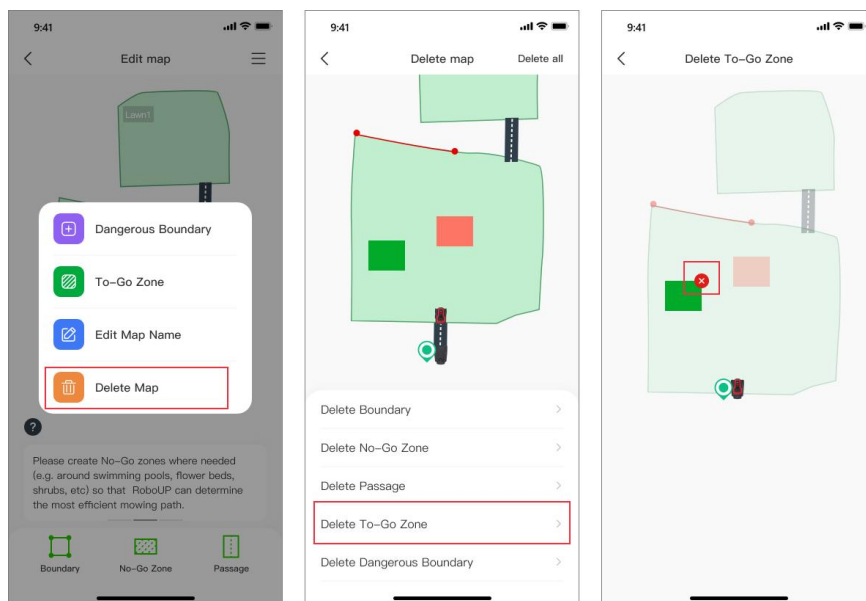
5.8.4 Delete Passage:

Click the **[Delete Passage]** at the bottom, and on the next page, click the red **[X]** icon on the Passage you want to delete.



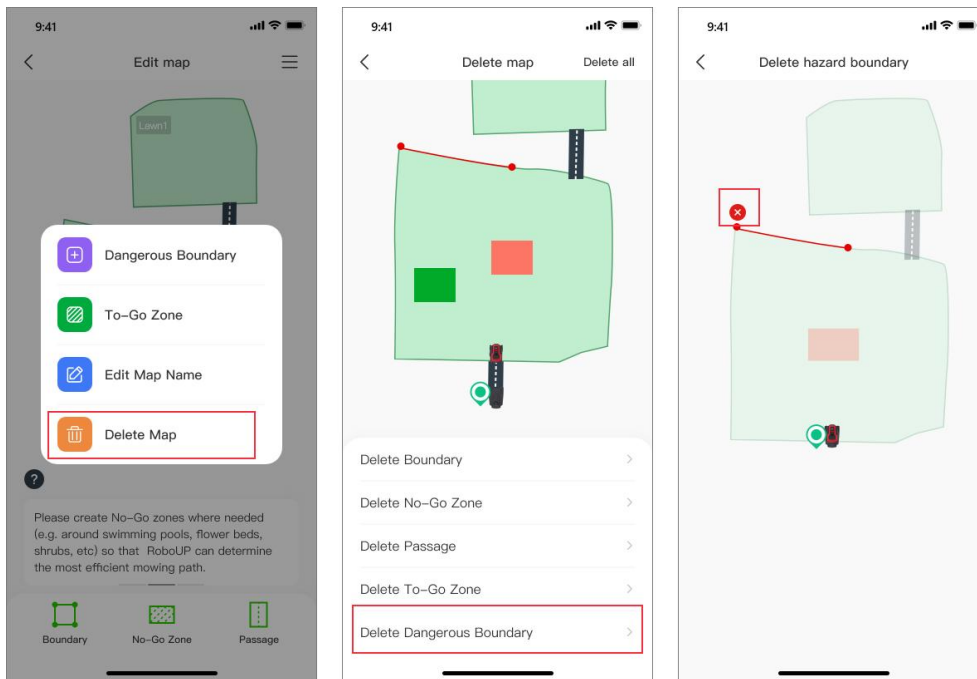
5.8.5 Delete To-Go Zone:

Click the **[Delete To-Go Zone]** at the bottom, and on the next page, click the red **[X]** icon on the To-Go Zone you want to delete.



5.8.6 Delete Dangerous Boundary:

Click the **[Delete Dangerous Boundary]** at the bottom, and on the next page, click the red **[X]** icon on the Dangerous Boundary you want to delete.



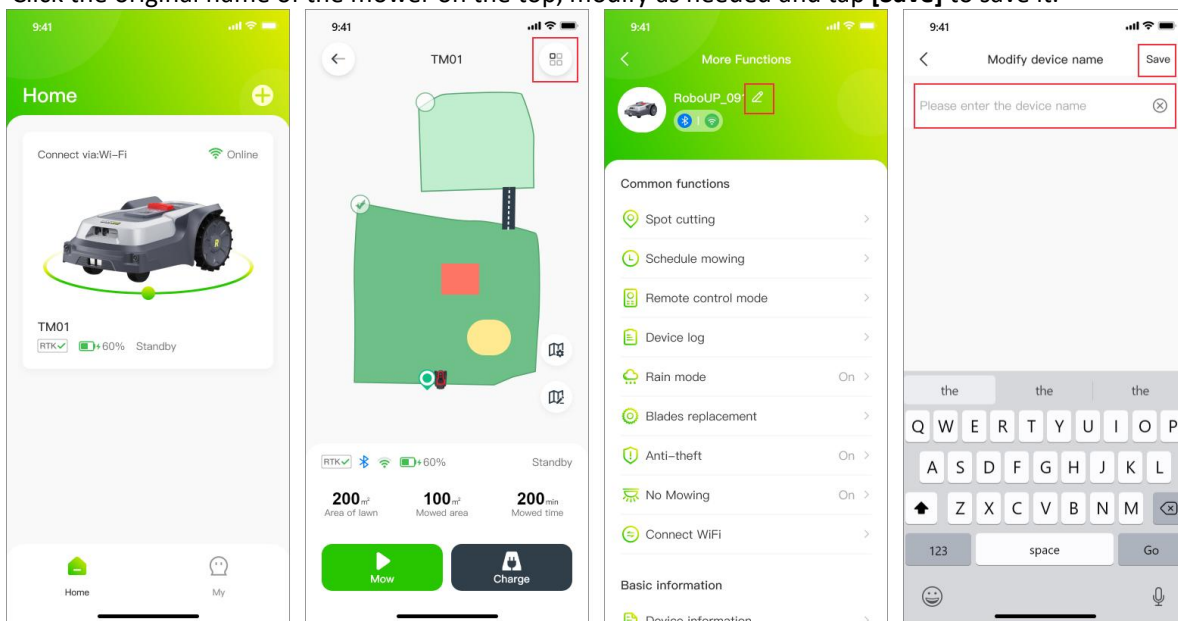
6 More Functions

6.1 Edit Mower Name

If you want to change the name of the mower, refer to the following steps how to do this.

Note: For changing mower's name it must be connected to Wi-Fi home network.

- 1) Open the RoboUP® APP and tap the mower. On the map page, tap the **[More Functions]** icon on the top right corner to enter the **[More Functions]** page.
- 2) Click the original name of the mower on the top, modify as needed and tap **[Save]** to save it.

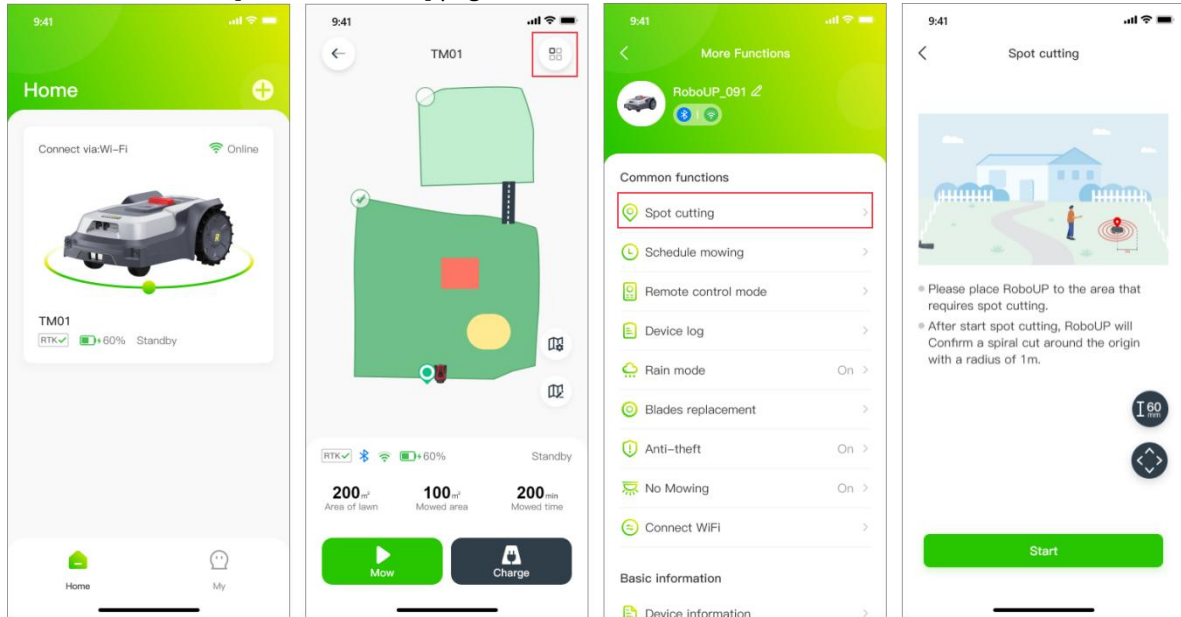


6.2 Spot Cutting

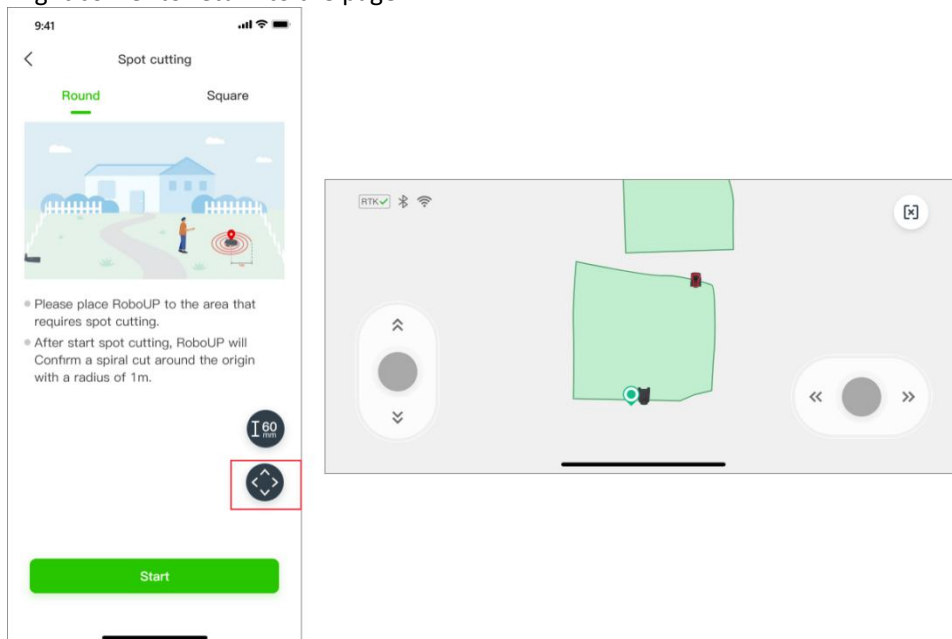
If you want to mow some smaller grass spots, use the **[Spot Cutting]** function according to the following steps:

- 1) Open the RoboUP® APP and tap the mower. On the map page, tap the **[More Functions]** icon in the top right

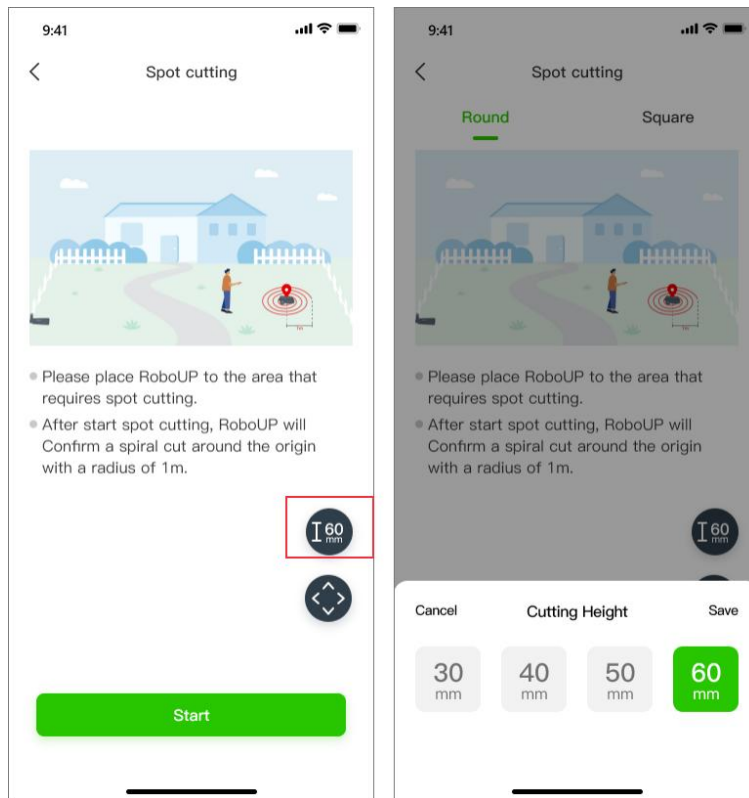
corner to enter the **[More Functions]** page.



- 2) Click **[Spot Cutting]** to enter the **[Spot Cutting]** page. Tap the button in the lower right corner to enter **[Remote control mode]**. Work the thumb sliders and steer the mower to the wanted destination. Click the **[X]** icon on the upper right corner to return to the page.



- 3) To modify the cutting height, click the **[height]** icon on the left. Select the preferred height and click **[Save]** and click the **[X]** icon to return to the previous page. Now tap **[Start]** below to start auto **Spot Cutting**.

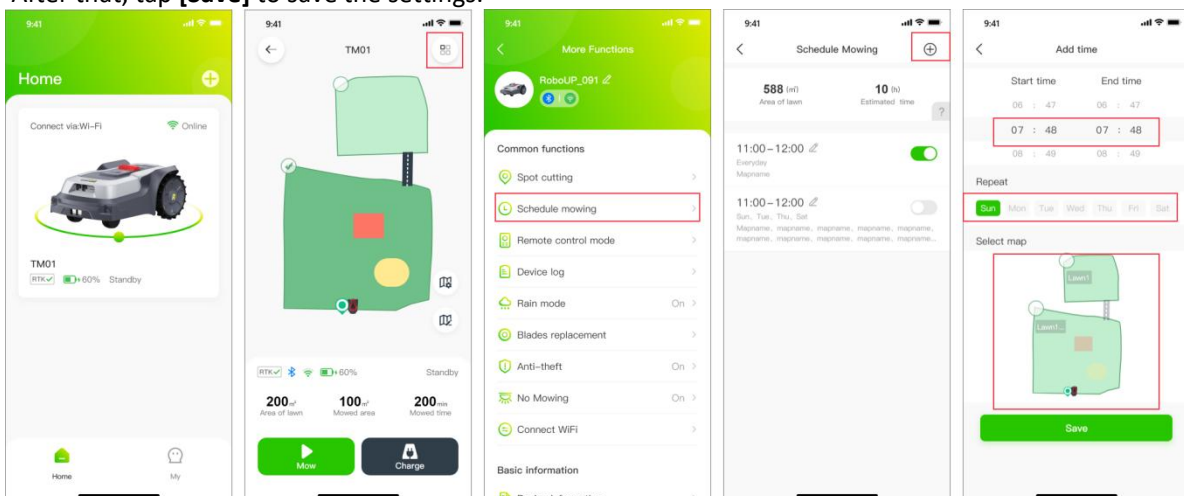



Note: On the [Spot cutting] page, you can choose square spot cutting(2m*2m).

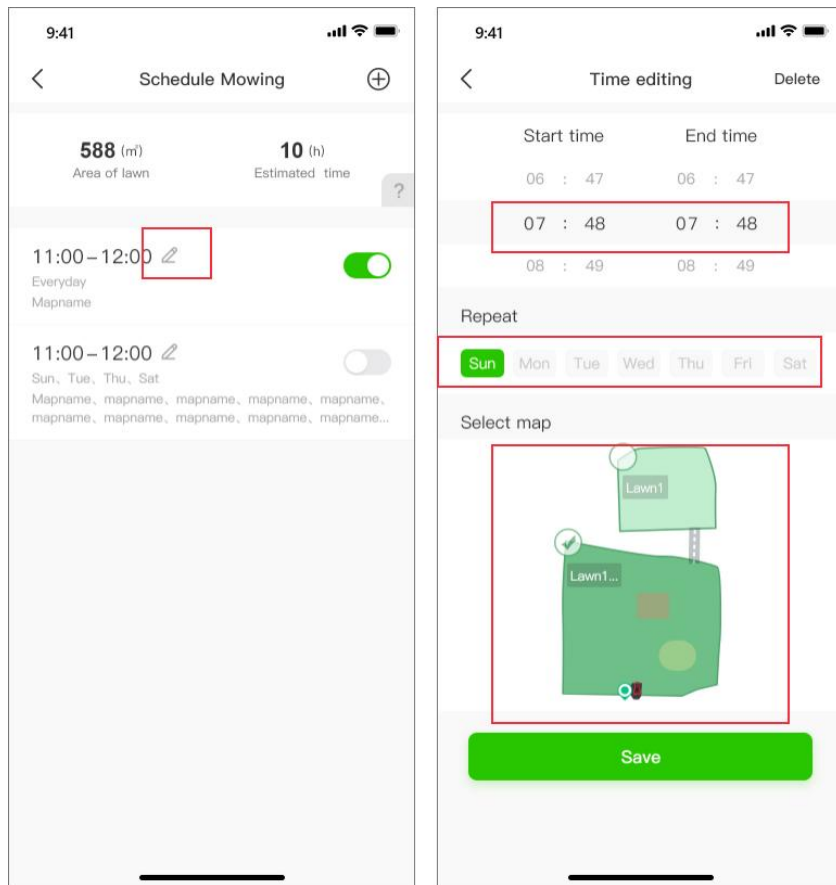
6.3 Schedule Mowing

Note: Use the APP in Bluetooth or Wi-Fi connection mode to set up Schedule Mowing.

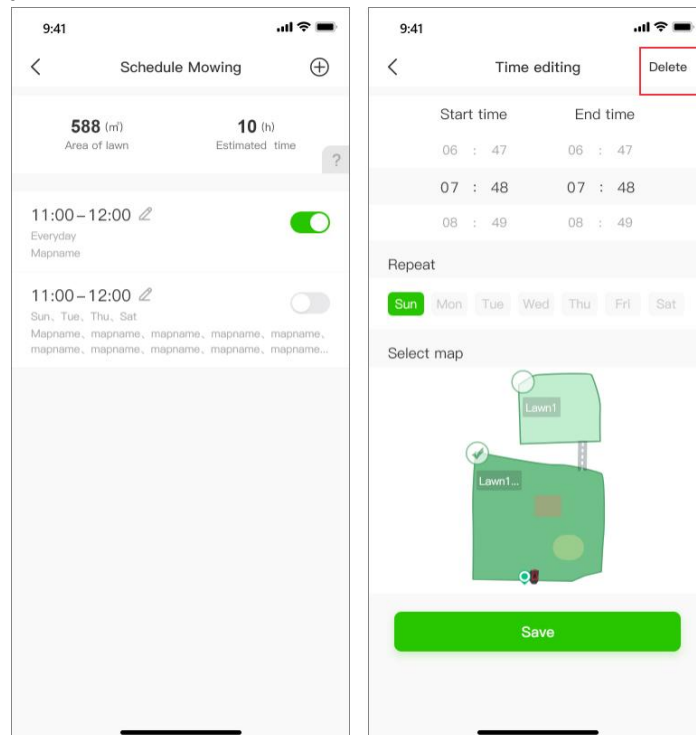
- 1) Open the RoboUP® APP and tap the mower. On the map page, tap the [More Functions] icon on the top right corner to enter the [More Functions] page.
- 2) Tap [Schedule Mowing] to enter the [Schedule Mowing] page. There you find the lawn area and estimated mowing time. Refer to the corresponding steps to add, edit, enable, disable or delete the mowing schedule.
- 3) **Add a new mowing schedule:** Tap [+] on the top right corner, set **start time** and **end time** for the mower to mow the lawn. Select the **working day** under [Repeat] and select the zones to customize the mowing schedules. After that, tap [Save] to save the settings.



- 4) **Edit the existing mowing schedule:** In order to modify details of the schedule, click the  icon and start editing. Once finished tap [Save] to save the new settings. You can also delete a schedule.



- 5) **Delete the existing mowing schedule:** In order to delete an existing schedule, long press the schedule, then tap **[Confirm]** to delete it.



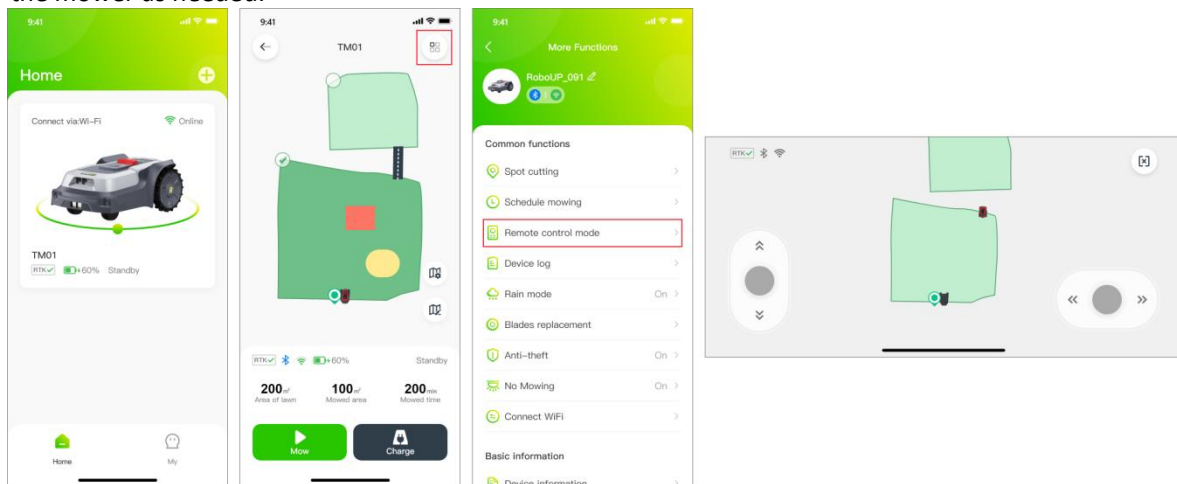
- 6) **Disable or enable the existing mowing schedule:** In order to keep a mowing schedule but put it in sleep mode, just tap the slider button to disable it. Tap the slider button again to re-enable the schedule.



6.4 Remote Control Mode

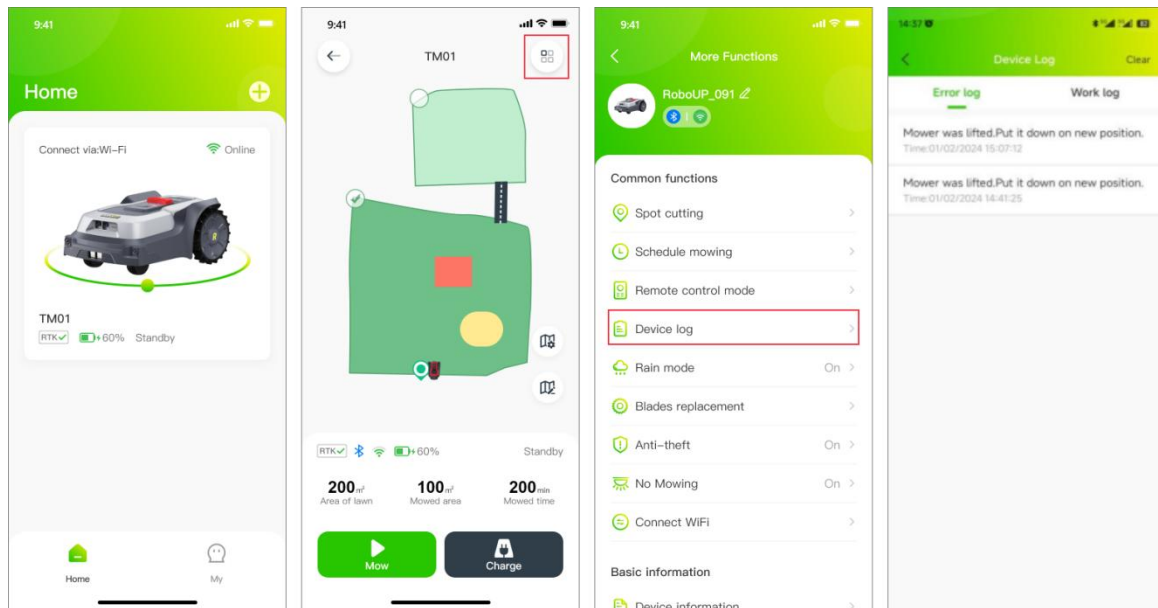
In order to move the mower to a peculiar spot, the **[Remote Control Mode]** function will be helpful:

- 1) Open the RoboUP® APP and tap the mower. On the map page, tap the **[More Functions]** bicon on the top right corner to enter the **[More Functions]** page.
- 2) Click **[Remote Control Mode]** to enter the next page. Use the thumb sliders “up/down – left/right” and steer the mower as needed.



6.5 Device Log

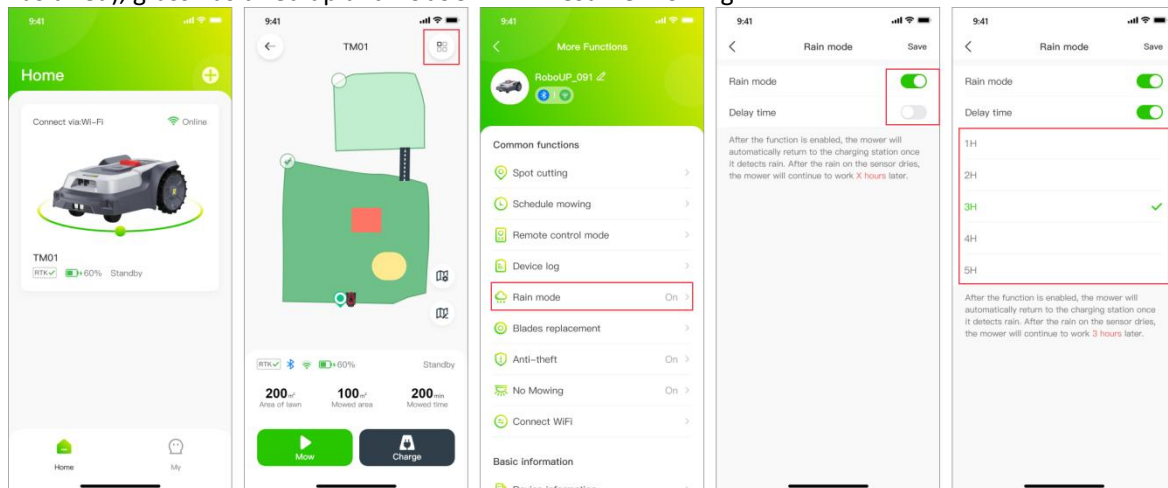
- 1) Open the RoboUP® APP and tap the mower. On the map page, tap the **[More Functions]** icon on the top right corner to enter the **[More Functions]** page.
- 2) Click **[Device Log]** to enter the **[Device Log]** page, where you can check the **Error Log** and **Work Log**.



6.6 Rain Mode

Note: If you don't want the mower to work on rainy days to avoid damaging the grass, you can turn on rain mode. When the mower detects rain now it will go back to the charging station. Mowing will be resumed once the rain has stopped, mower's rain sensor has dried, and the delay time has run out.

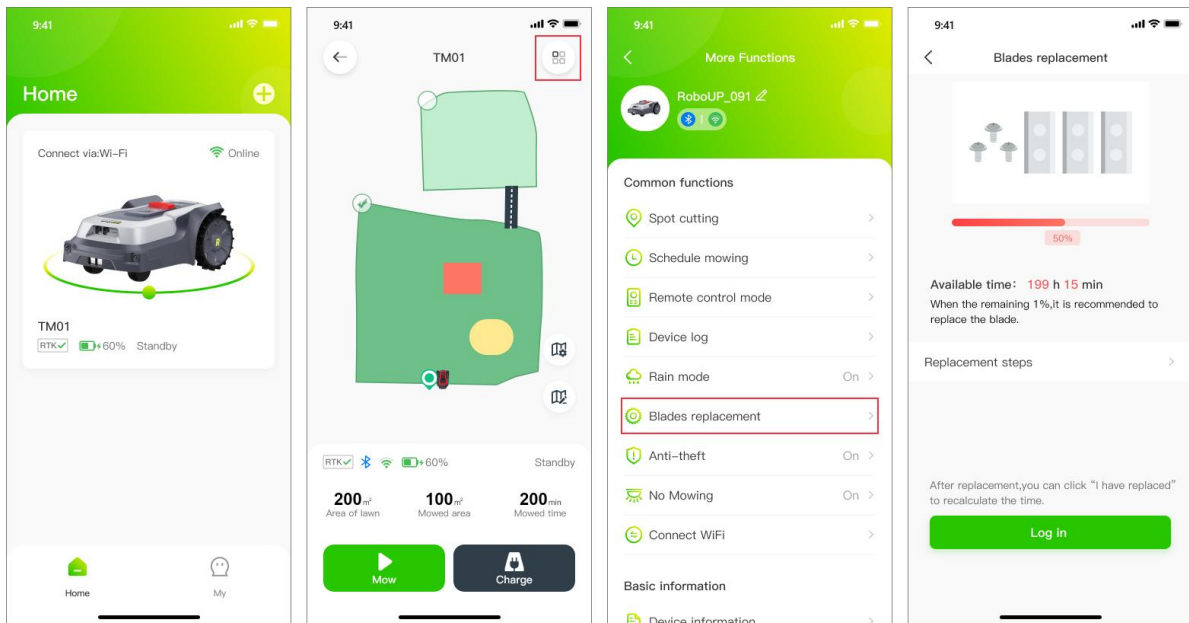
- 1) Open the RoboUP® APP and tap the mower. On the map page, tap the **[More Functions]** icon on the top right corner to enter the **[More Functions]** page.
- 2) Click **[Rain Mode]**. Tap/toggle the button to enable/disable **Rain Mode**.
- 3) Click **[Delay time]** to enable it and select the amount of time the mower will wait after rain has stopped (sensor has dried), grass has dried up and RoboUP® will resume mowing.



6.7 Blades Replacement

Note: When a new set of blades has been used for about 200 hours, refer to the [Replacing steps] to use another screw holes.

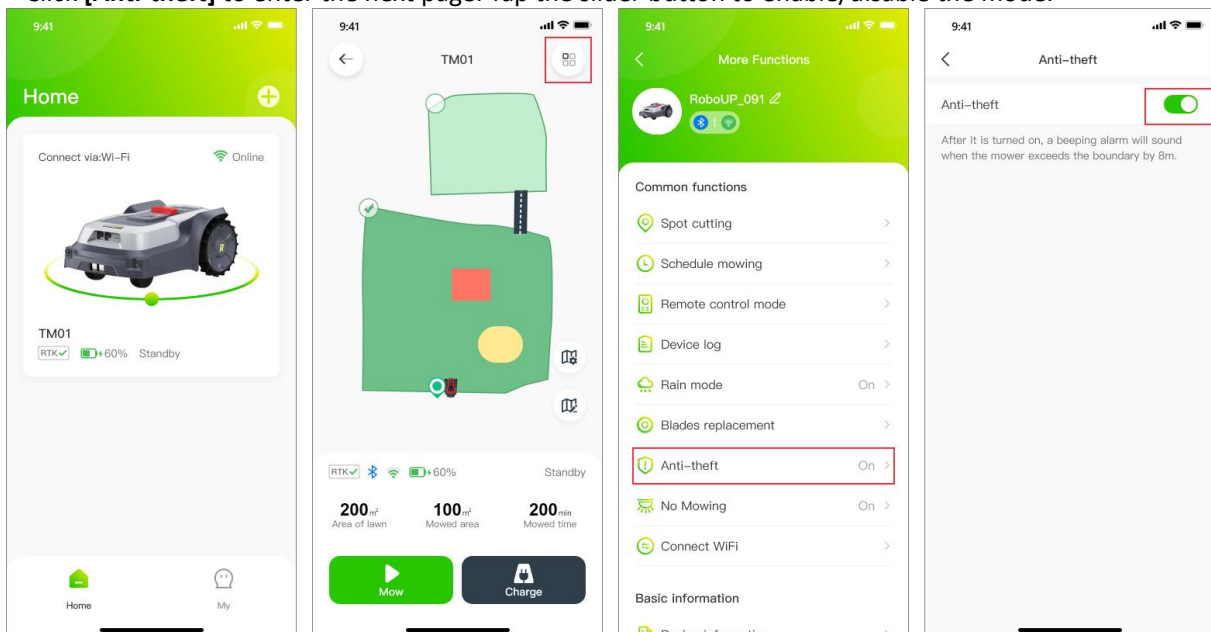
- 1) Open the RoboUP® APP and tap the mower. On the map page, tap the **[More Functions]** icon on the top right corner to enter the **[More Functions]** page.
- 2) **[Blades Replacement]** to enter the next page, where you see the remaining life time before replacement is needed.
- 3) The blades have 2 mounting holes. After app. 200hrs you maybe want to turn the blades by 180 degrees for more efficiency. For more details click the **[Replacement Steps]** for reference. If you prefer to install a new set of blades click the button below **[I have replaced]** and the time will reset.



6.8 Anti-theft

The mower will be auto-locked when it is moved outside of the mapped area. For re-activated the mower enter the correct PIN code. To keep the mower safe, it is recommended to enable the **[Anti-theft]** mode.

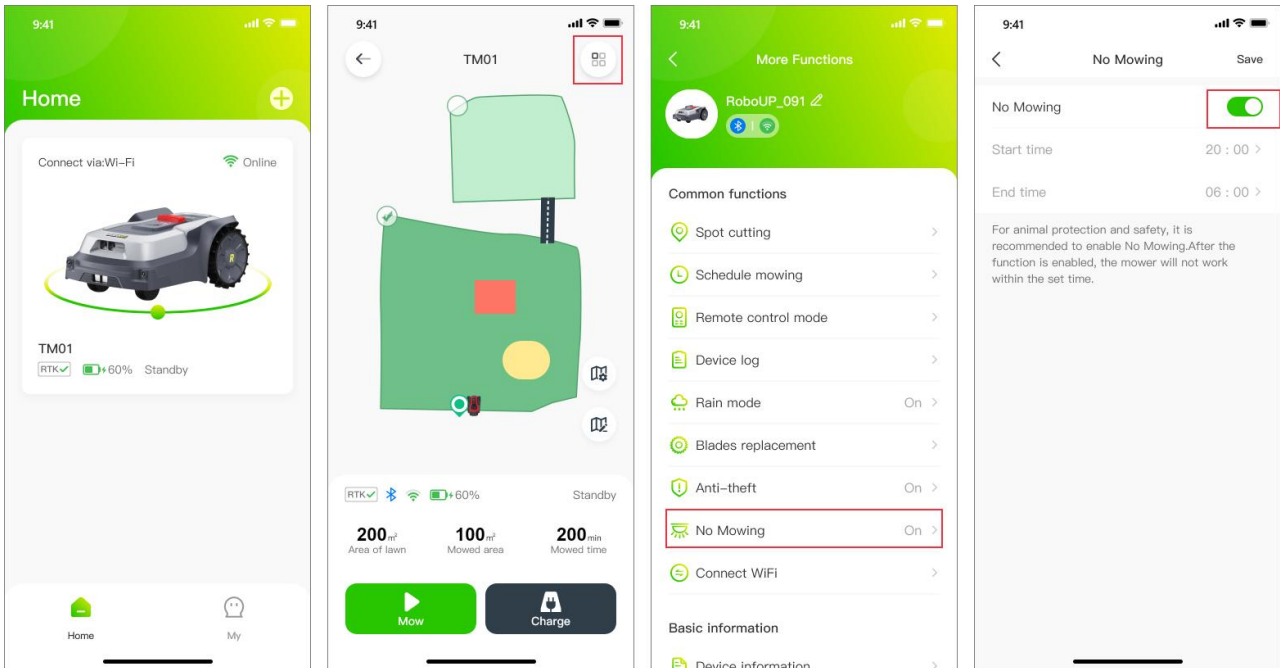
- 1) Open the RoboUP® APP and tap the mower. On the map page, tap the **[More Functions]** icon on the top right corner to enter the **[More Functions]** page.
- 2) Click **[Anti-theft]** to enter the next page. Tap the slider button to enable/disable the mode.



6.9 No Mowing

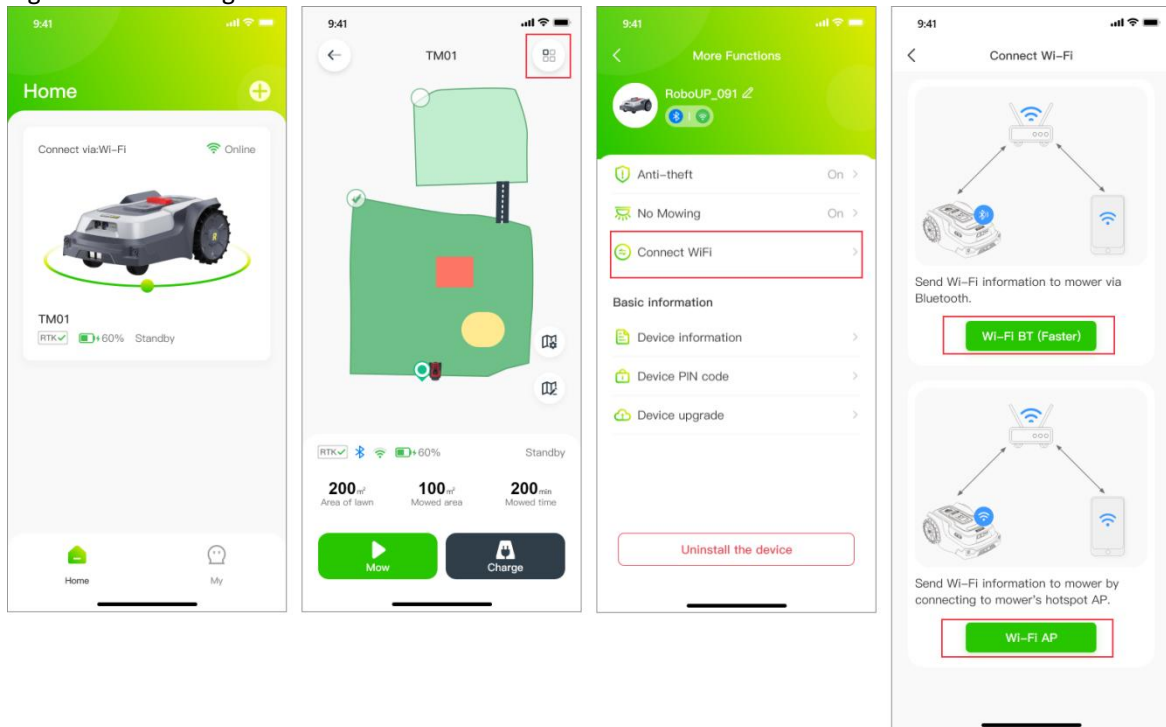
To prevent mowing at specific times, night mode can be selected according to the steps below:

- 1) Open the RoboUP® APP and tap the mower. On the map page, tap the **[More Functions]** icon on the top right corner to enter the **[More Functions]** page.
- 2) Click **[No Mowing]** to enter the next page, then tap the slider button to enable/disable **No Mowing Mode**.
- 3) After enabling, set the start time and end time for the mower to stop and resume mowing.



6.10 Connect Wi-Fi

- 1) Open the RoboUP® APP and tap the mower. On the map page, tap the **[More Functions]** icon on the top right corner to enter the **[More Functions]** page.
- 2) Click **[Connect WiFi]**, select the desired connection method, and for detailed connection steps, please refer to Heading 3.1.1 or Heading 3.1.2.



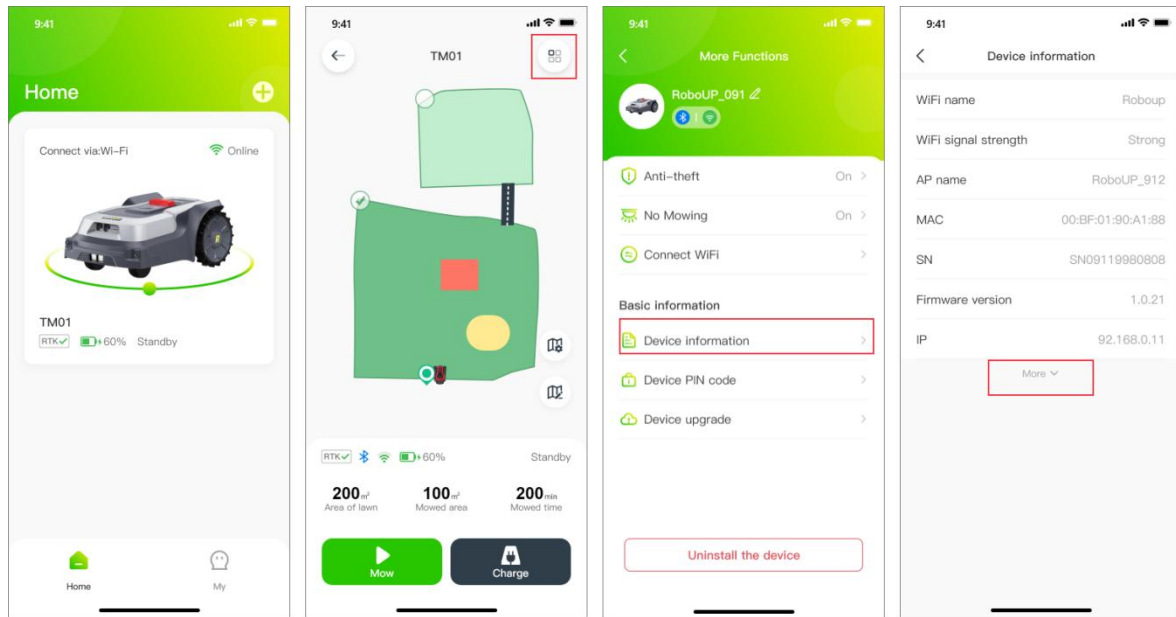
6.11 Device Information

In order to check out the mower’s basic device information (MAC address, Serial Number, firmware version, etc) in the RoboUP® APP following steps will help:

- 1) Open the RoboUP® APP and tap the mower. On the map page, tap the **[More Functions]** icon on the top right

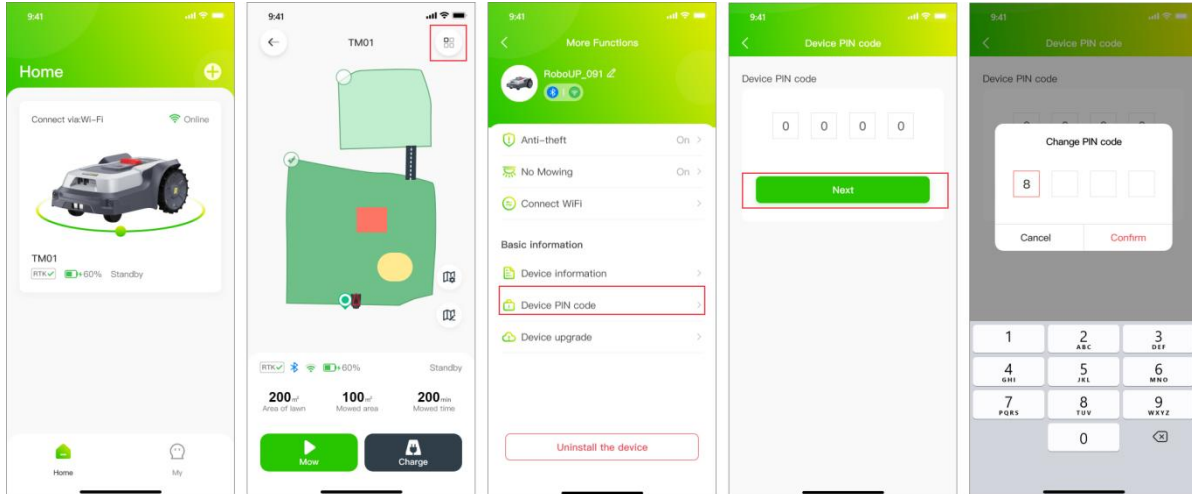
corner to enter the **[More Functions]** page.

- 2) Tap **[Device Information]**. The map page now shows basic device information. Click **[More]** for additional information.



6.12 Device PIN Code

- 1) Open the RoboUP® APP and tap the mower. On the map page, tap the **[More Functions]** icon on the top right corner to enter the **[More Functions]** page.
- 2) Click **[Device PIN Code]** to enter the page. Tap the **[Change PIN Code]** button, enter the new PIN code and click **[Confirm]** to save it.

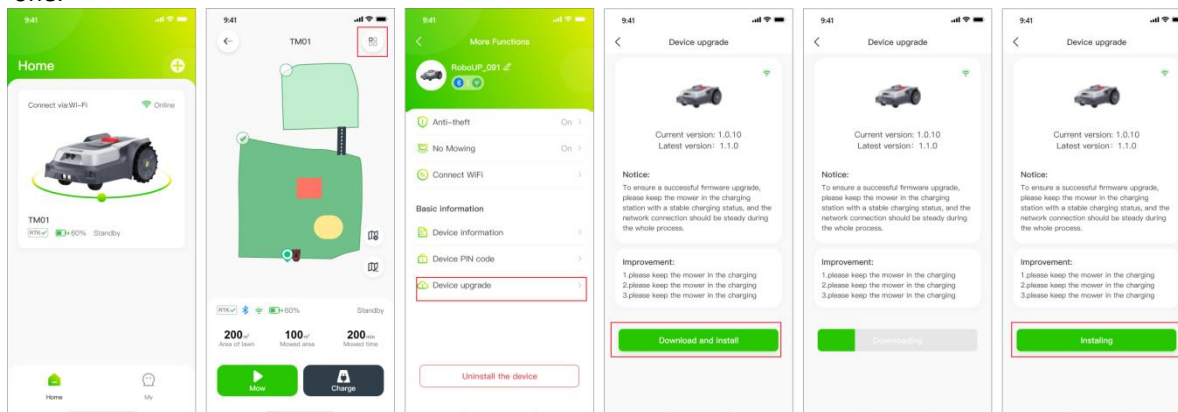


6.13 Device Upgrade

Note: Before upgrading the mower firmware, refer to chapter “5: Wi-Fi Connection”, explaining how to access the Internet using your Wi-Fi home network. Internet availability can be checked on the mowers LCD UI (look for Wi-Fi icon). The mower must have good/strong Wi-Fi signal reception for a smooth firmware upgrade.

- 1) Open the RoboUP® APP and tap the mower. On the map page, tap the **[More Functions]** icon on the top right corner to enter the **[More Functions]** page.
- 2) Tap **[Device Upgrade]** option. On the next page click **[Download and install]** and confirm to enter the automatic firmware upgrade process. The upgrade process will be finished within app. 15 minutes depending on FW file size and network speed.

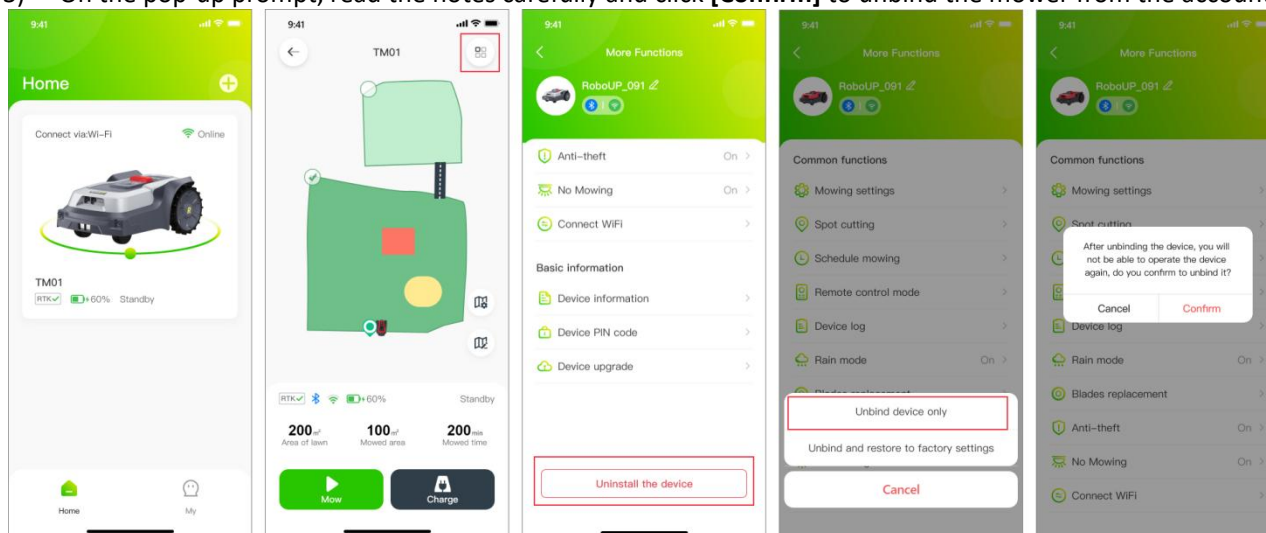
- Once the firmware upgrade is finished check on the **[Device Upgrade]** page if the current version is the latest one.



6.14 Unbinding Mower

Note: As long as you have a mower in your account that has been bound via Wi-Fi, you can unbind it regardless of whether the mower is online at the time.

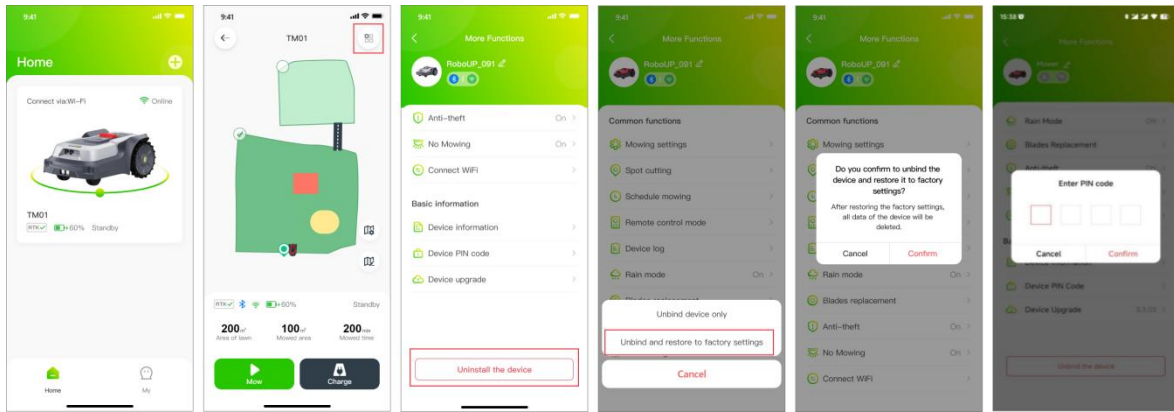
- Open the RoboUP® APP and tap the mower. On the map page, tap the **[More Functions]** icon on the top right corner to enter the **[More Functions]** page.
- On the page bottom click **[Unbind the device]** and on next page pop-up window select **[Unbind device only]**.
- On the pop-up prompt, read the notes carefully and click **[Confirm]** to unbind the mower from the account.



6.15 Factory Reset

Note: Note: Before restoring the mower's factory settings , refer to chapter "5: Wi-Fi Connection" explaining how to access the Internet using your Wi-Fi home network. Internet availability can be checked on the mowers LCD UI (look for Wi-Fi icon). The mower must have good/strong Wi-Fi signal reception for a smooth factory reset operation.

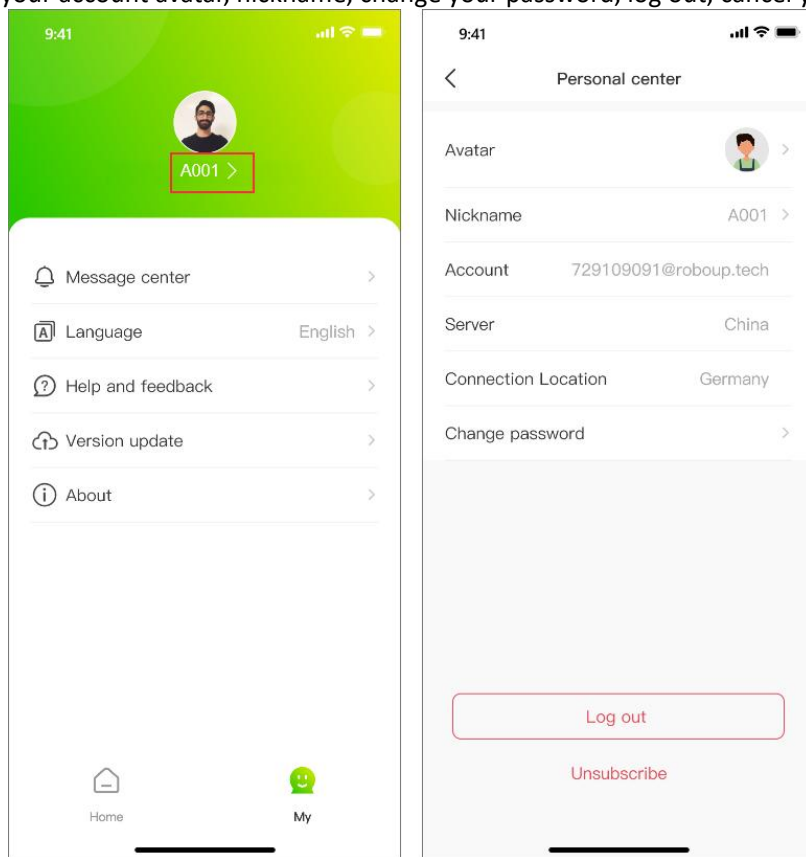
- Open the RoboUP® APP and tap the mower. On the map page, tap the **[More Functions]** icon on the top right corner to enter the **[More Functions]** page.
- On the page bottom click **[Unbind the device]** and in the pop-up window select **[Unbind and restore to factory settings]**.
- On the pop-up prompt, tap **[Confirm]** to go next and **Enter PIN code** to restore factory settings once you tap **[Confirm]** again.



7 Me

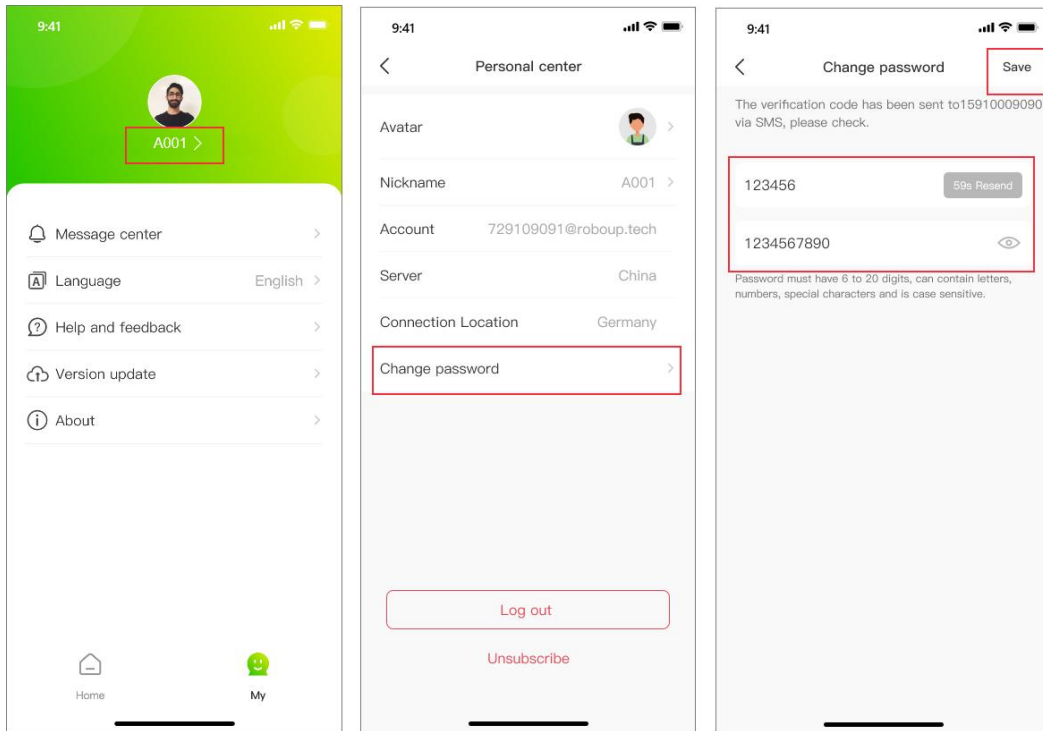
7.1 Personal Center

- 1) Click **[Me]** on the homepage to enter the My Page, then click the avatar to enter the **[Personal Center]** page, where you can set your account avatar, nickname, change your password, log out, cancel your account, etc.



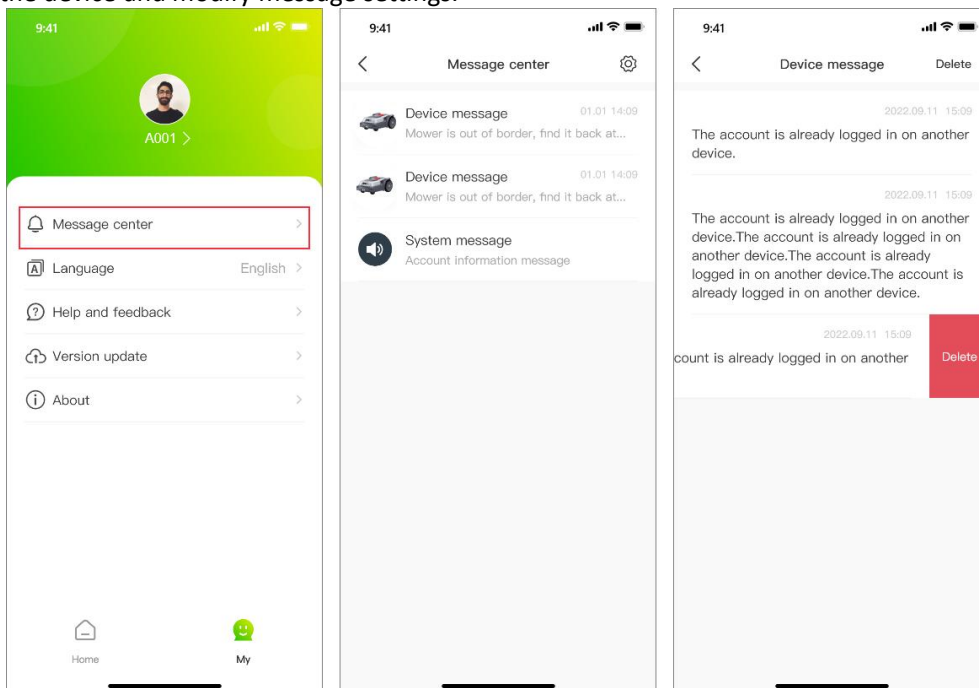
7.1.1 Change Password

- 1) Click **[Change password]**, log in to the email account, obtain the verification code, and enter it along with your new password, then click **[Save]**.



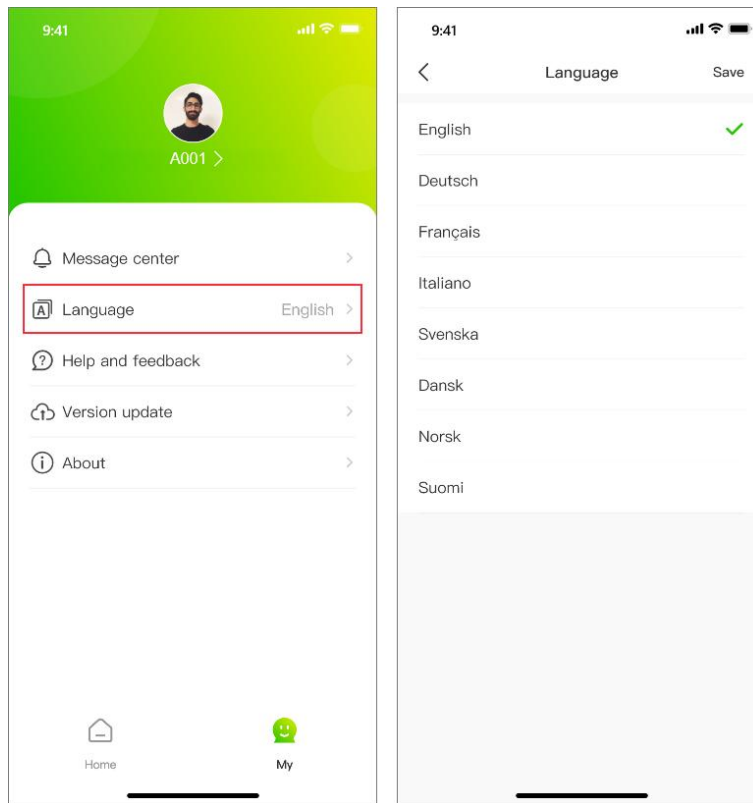
7.2 Message Center

- 1) On the home page, click **[Me] - [Message Center]** to enter the message center page to view message notifications pushed by the device and modify message settings.



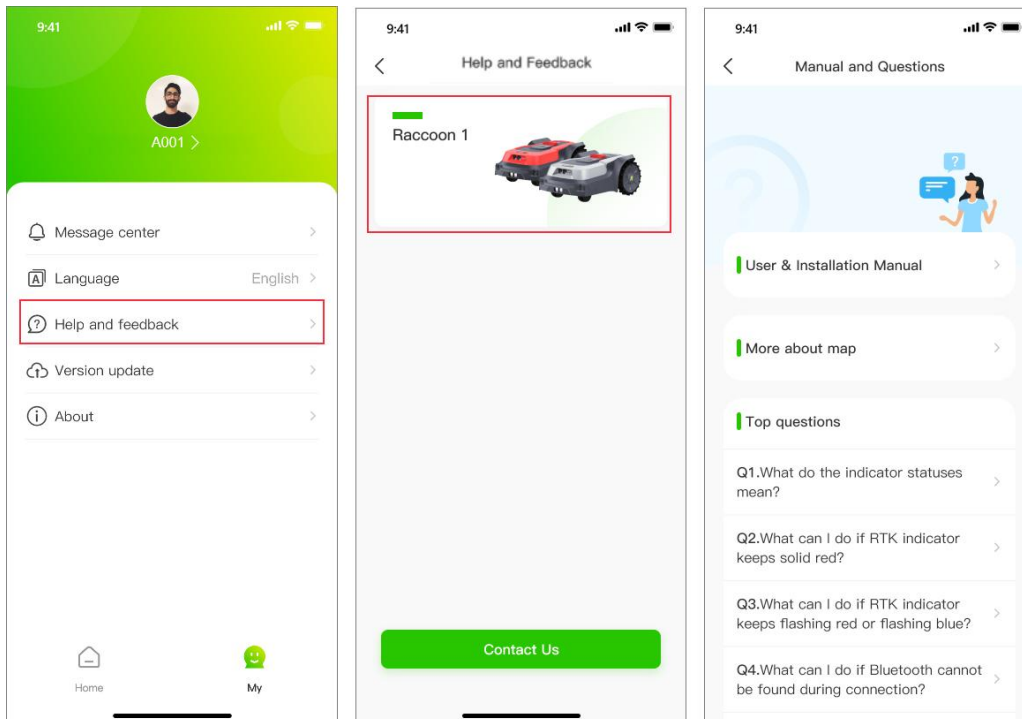
7.3 Language

- 1) Click **[Me]-[Language]** on the homepage to enter the language switching page. The default language is English, and you can switch to other languages (English, German, French, Italian, Swedish, Danish, Norwegian, Finnish).



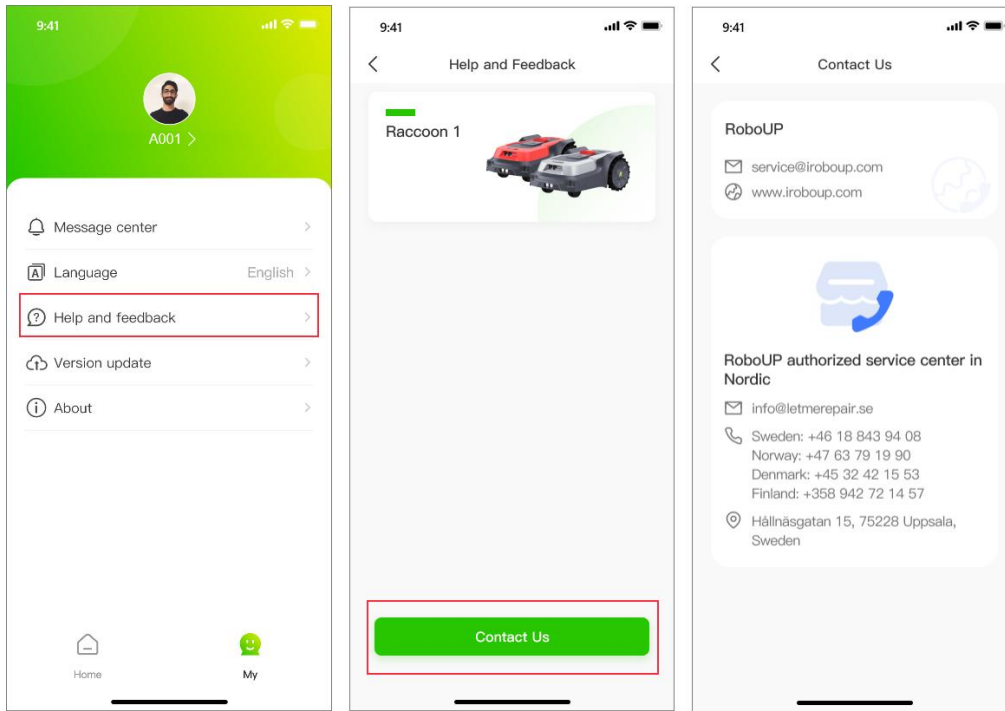
7.4 Help And Feedback

- 1) On the home page, click **[Me]-[Help And Feedback]** to enter the help center page, where you can view instructions, popular questions and feedback.



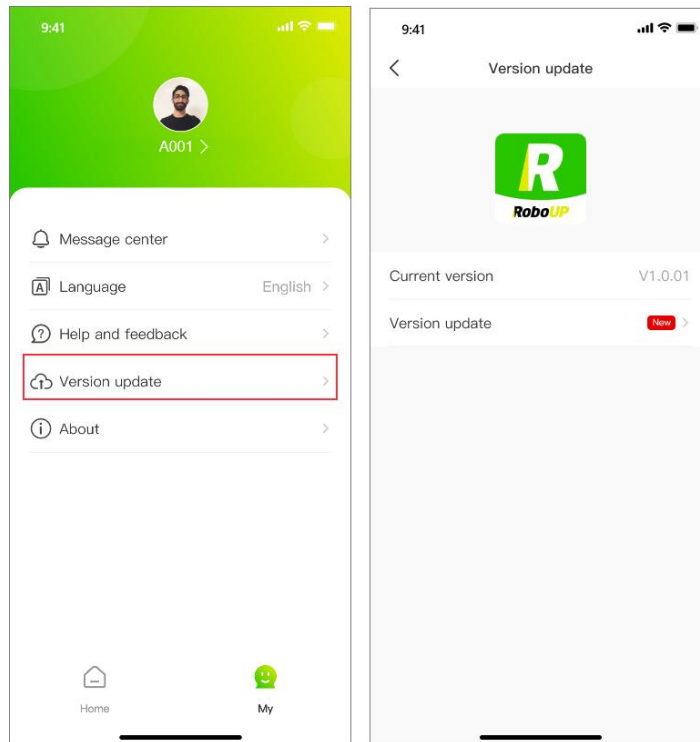
7.5 Contact Us

- 1) On the homepage, click **[Me]-[Help And Feedback]-[Contact Us]** to enter the APP version page and view the current and view our after-sales contact information..



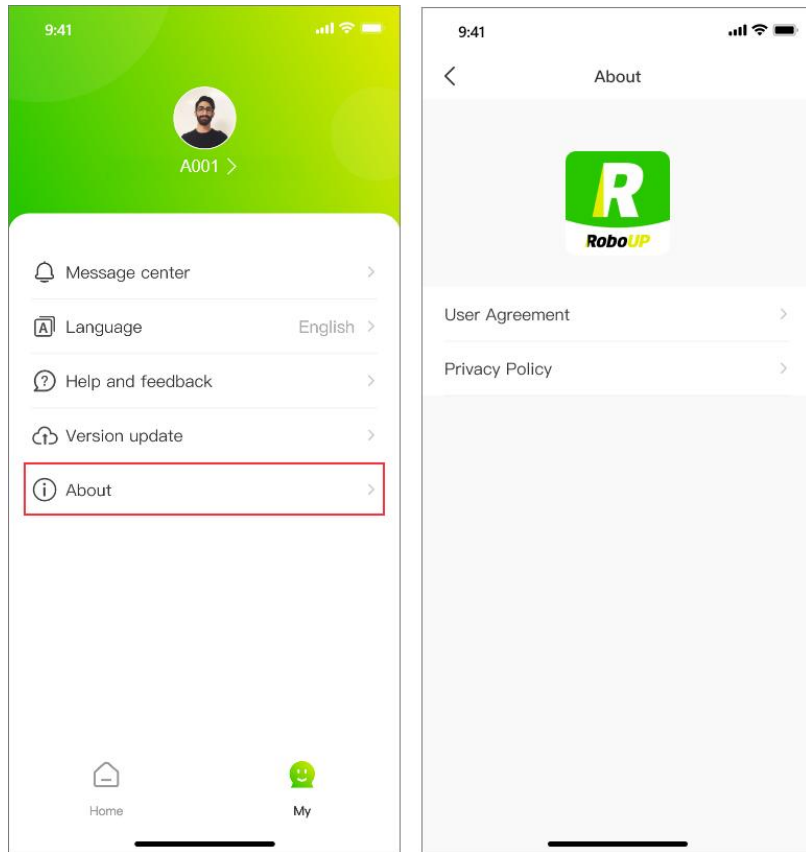
7.6 APP Version Update

- 1) On the homepage, click **[Me]-[Version Update]** to enter the APP version page and view the current and latest versions of the APP.



7.7 About

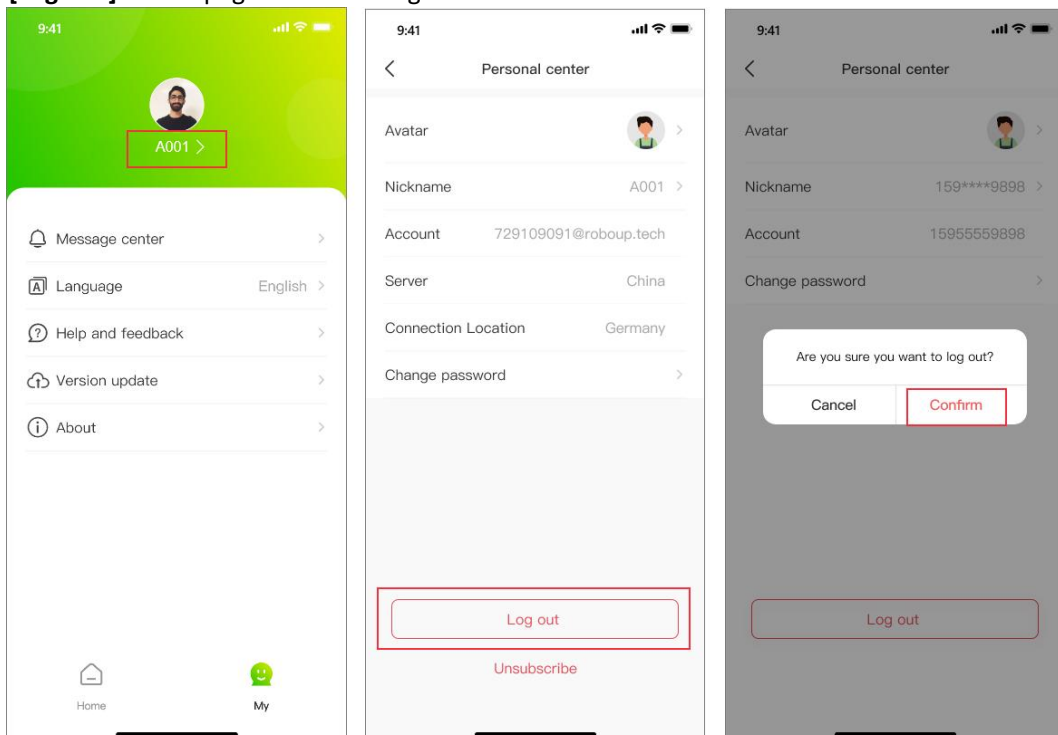
- 1) On the homepage, click **[Me]-[About]** to enter the about page and view the user agreement and privacy policy.



7.8 Log Out

If you did not login to your account for a while you need to re-activate the token. To accomplish that logout first and re-login afterwards:

- 1) Open the RoboUP® APP and click the **[Me]** icon on the page's bottom right corner to enter the next page.
- 2) Click **[Account Name]** underneath the **Profile Photo** to enter the next page.
- 3) Click **[Log Out]** on the page bottom to log out from the account.



7.9 Unsubscribe

- 1) When you want to cancel your account, after logging into the app, click **[Me]**, click the account under the avatar, and enter the **[Personal Center]** page.
- 2) Click **[Unsubscribe]**, after entering the page, click **[Send]** to send the verification code to the account email, enter the verification code, and click **[Unsubscribe]** to cancel the account.
- 3) Note: After canceling an account, all data of the account will be cleared in the cloud and cannot be restored.

