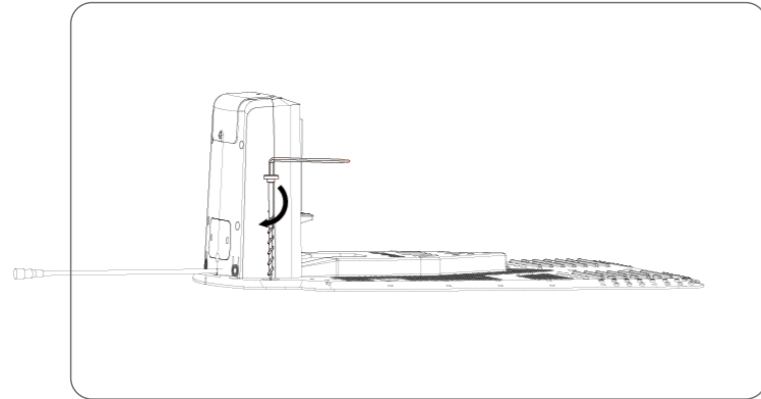


⑤ Secure the charging station to the ground.



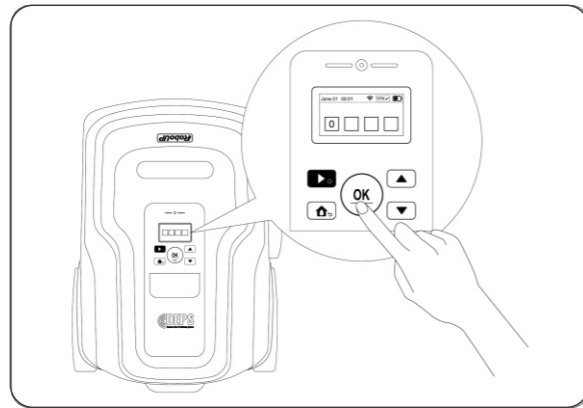
RoboUP

Boundary Wire-Free Robotic Lawn Mower

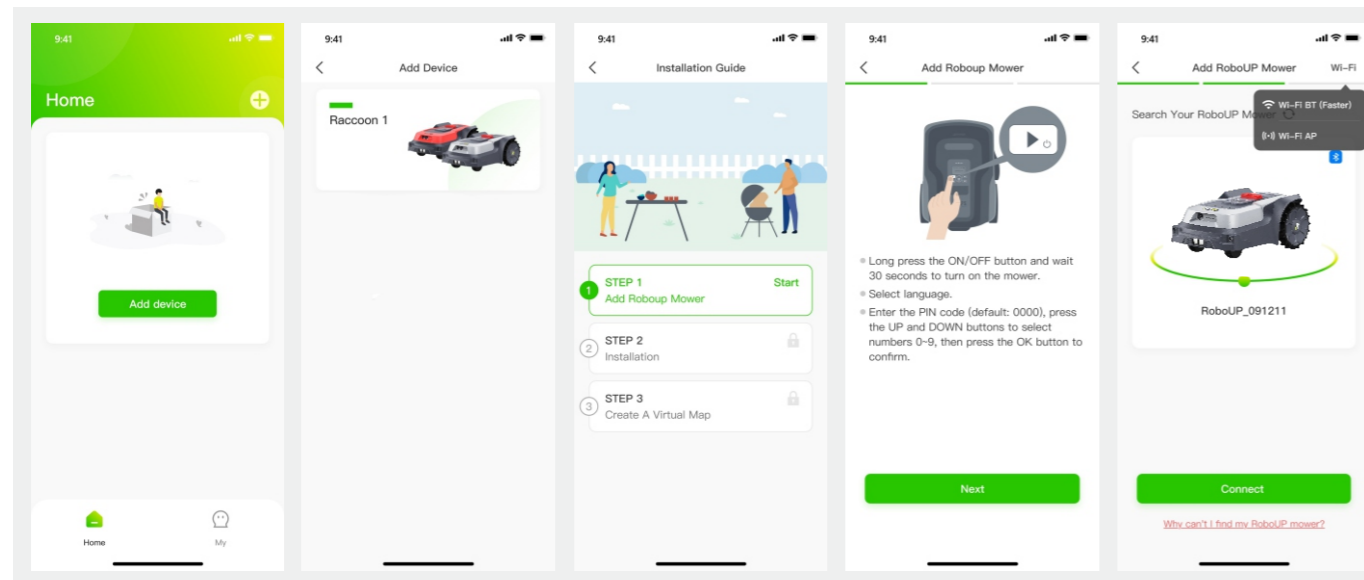
Quick Start Guide

4. Turn on the mower

① Place the mower into the charging station and long press the ON/OFF button to turn on the mower. Input default PIN "0000" (Default action: Press the OK button four times in a row with OK button to unlock mower).



② Enable Bluetooth on your phone, log in to the APP and follow the instructions to pair with the mower.

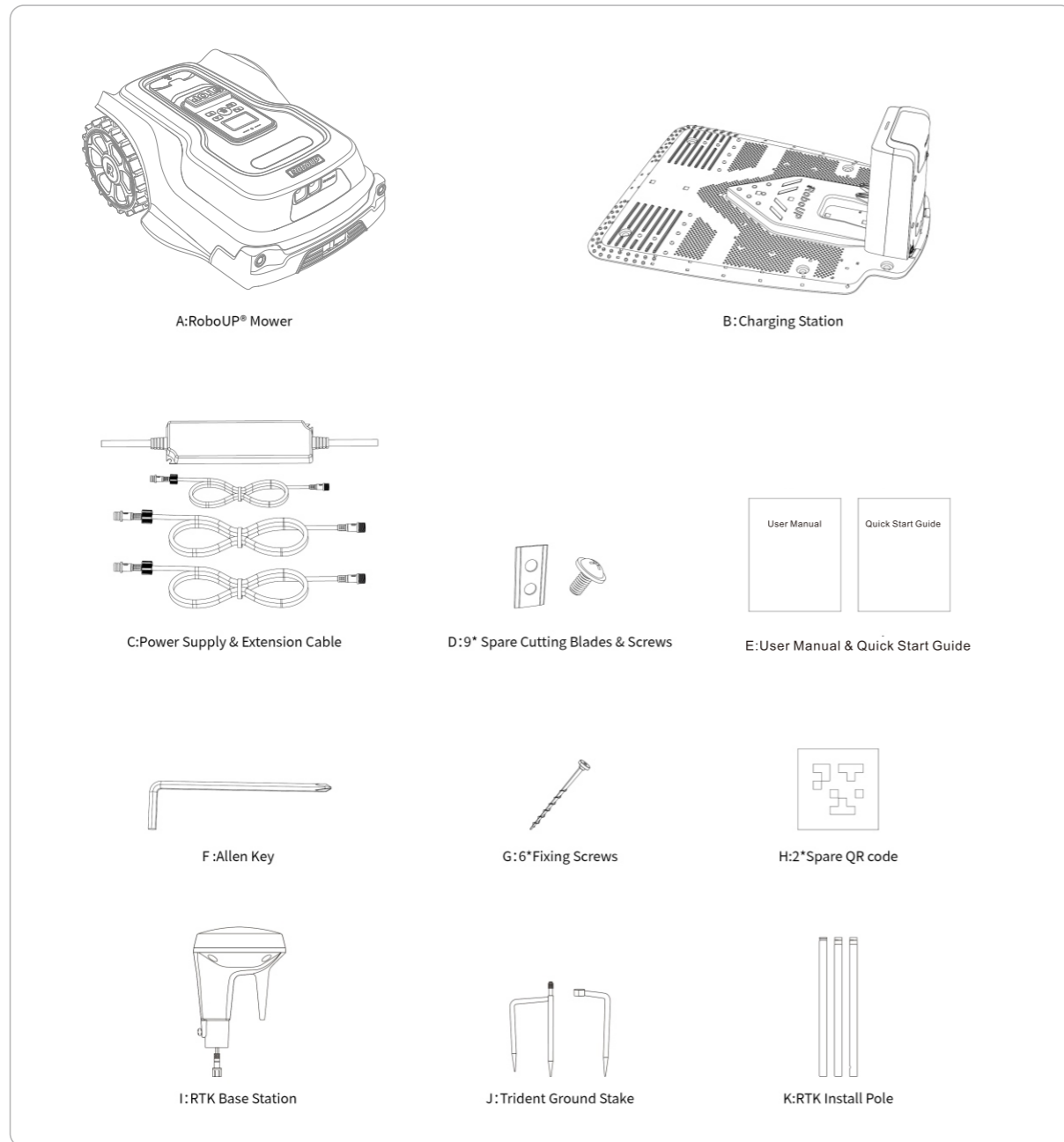


③ Wait patiently for 3 min until RTK is√. Then follow the instructions in the APP and create the map.



R

1. What is in the box?



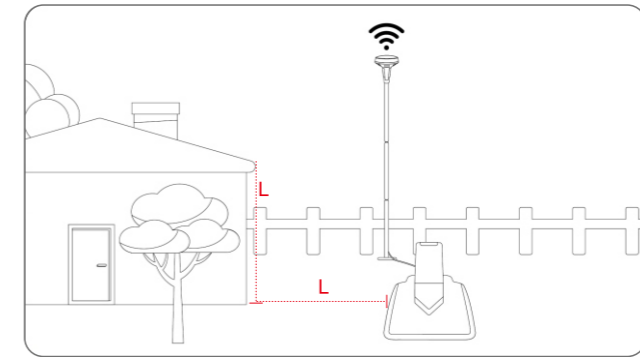
2. Prepare the APP

To ensure a successful setup, please scan the QR code to download the RoboUP APP, register and log in to the APP using your email address.

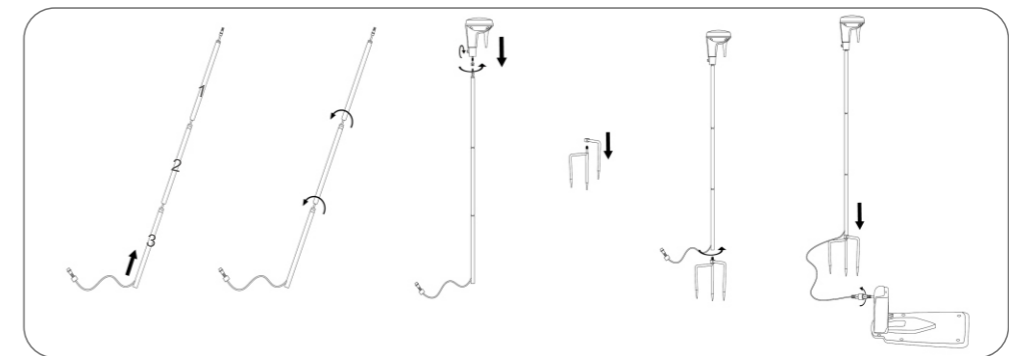


3. Install the charging station and RTK base station

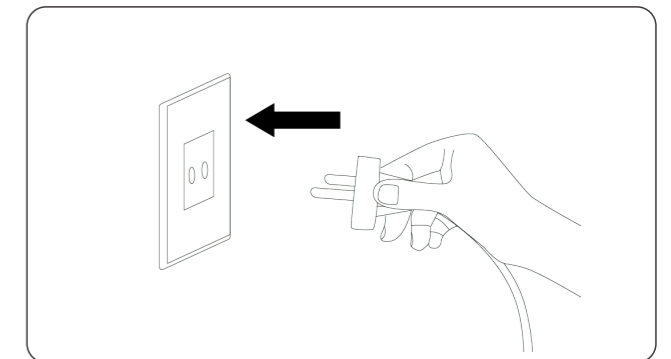
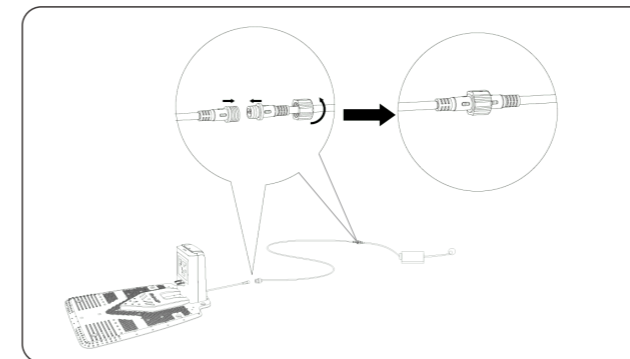
① Find a suitable location, which is an open area with good GPS signal, flat ground, and no obstacles within 2 meters.



② Install the RTK installation components and connect the RTK base station to the charging station. Use an extension cable as needed.



③ Place the charging station and RTK base station on the target position, then power on the charging station.



④ When the light on the RTK base station becomes solid blue, it means the GPS signal is strong. Flashing blue means weak GPS signal and solid red means no GPS signal. If the signal is poor, relocate the RTK base station to an open space.

